



Australian Government

Department of Infrastructure and Regional Development

Bureau of Infrastructure, Transport and Regional Economics

STATISTICAL REPORT



bitre
Safety

**International road safety comparisons
2012**

© Commonwealth of Australia 2014

ISSN: 1447-8218

ISBN: 978-1-922205-92-6

August 2014/INFRA2249

Ownership of intellectual property rights in this publication

Unless otherwise noted, copyright (and any other intellectual property rights, if any) in this publication is owned by the Commonwealth of Australia (referred to below as the Commonwealth).

Disclaimer

The material contained in this publication is made available on the understanding that the Commonwealth is not providing professional advice, and that users exercise their own skill and care with respect to its use, and seek independent advice if necessary.

The Commonwealth makes no representations or warranties as to the contents or accuracy of the information contained in this publication. To the extent permitted by law, the Commonwealth disclaims liability to any person or organisation in respect of anything done, or omitted to be done, in reliance upon information contained in this publication.

Creative Commons licence

With the exception of (a) the Coat of Arms; and (b) the Department of Infrastructure's photos and graphics, copyright in this publication is licensed under a Creative Commons Attribution 3.0 Australia Licence.

Creative Commons Attribution 3.0 Australia Licence is a standard form licence agreement that allows you to copy, communicate and adapt this publication provided that you attribute the work to the Commonwealth and abide by the other licence terms. A summary of the licence terms is available from <http://creativecommons.org/licenses/by/3.0/au/deed.en>. The full licence terms are available from <http://creativecommons.org/licenses/by/3.0/au/legalcode>.

Use of the Coat of Arms

The Department of the Prime Minister and Cabinet sets the terms under which the Coat of Arms is used. Please refer to the Department's Commonwealth Coat of Arms and Government branding web page <http://www.dpmc.gov.au/guidelines/index.cfm#brand> and, in particular, the Guidelines on the use of the Commonwealth Coat of Arms publication.

An appropriate citation for this report is:

Bureau of Infrastructure, Transport and Regional Economics (BITRE), 2014, *Statistical Report – International road safety comparisons 2012*, BITRE, Canberra ACT.

Contact us

This publication is available in PDF format. All other rights are reserved, including in relation to any Departmental logos or trade marks which may exist. For enquiries regarding the licence and any use of this publication, please contact:

Bureau of Infrastructure, Transport and Regional Economics (BITRE)
Department of Infrastructure and Regional Development
GPO Box 501, Canberra ACT 2601, Australia
Telephone: (international) +61 2 6274 7210
Fax: (international) +61 2 6274 6855
Email: bitre@infrastructure.gov.au
Website: www.bitre.gov.au

Bureau of Infrastructure, Transport and Regional Economics

International road safety comparisons 2012

Department of Infrastructure and Regional Development
Canberra, Australia

At a glance

This report presents tabulations of road deaths and road death rates for Organisation for Economic Co-operation and Development (OECD) nations and Australian states and territories. The rates allow for a comparison of Australia's road safety performance with that of other OECD nations by accounting for the differing levels of population, motorisation and distances travelled.

- In terms of annual deaths per 100,000 population in 2012 :

Australia's rate of 5.72 was the 16th lowest rate out of the 33 nations with available data. The nations with the two lowest rates were

– Iceland	2.81
– United Kingdom	2.83

Between 2003 and 2012, the annual population-standardised risk of a road crash fatality in Australia declined by a total of 30.5 per cent. Over the same period the OECD median rate fell by 38.9 per cent. The rates for all Australian jurisdictions decreased by between 5 per cent (Australian Capital Territory) and 45 per cent (South Australia).

- In terms of annual deaths per 10,000 registered vehicles in 2012 :

Australia's rate of 0.78 was the 14th lowest rate out of the 30 nations with available data. The nations with the two lowest rates were

– Iceland	0.34
– Norway	0.39

Annual road deaths in Australia relative to vehicle ownership declined between 2003 and 2012 by a total of 37.0 per cent. During this period the median rate for OECD nations declined by 49.2 per cent. Australian jurisdictions achieved reductions of between 13 per cent (Australian Capital Territory) and 49 per cent (South Australia).

- In terms of annual deaths per 100 million vehicle-kilometres-travelled in 2012 :

Australia's rate of 0.56 was the 12th lowest rate out of 20 nations with available data. The nations with the two lowest rates were

– Iceland	0.29
– Norway	0.33

Between 2003 and 2012, Australia's rate declined by a total of 29.0 per cent whilst the OECD median declined by 43.3 per cent. For Australian jurisdictions, the reductions ranged from 2 per cent (Australian Capital Territory) to 42 per cent (South Australia).

Data definitions and sources

International data

The International Road Traffic Accident Database (IRTAD 2014a) is the main source of fatality and exposure data in this report. IRTAD is maintained by the Joint Transport Research Centre of the OECD and the International Transport Forum. Each year member nations supply IRTAD with their most recent data, which may include revisions to historical data.

Further information on IRTAD is available at

< <http://internationaltransportforum.org/irtadpublic/about.html> >.

In addition to the IRTAD database, other sources include the 2014 IRTAD *Road Safety Annual Report* (IRTAD 2014b), OECD Stat Extracts (OECD 2014) and in a small number of cases, a country's relevant government website.

Australian data

Australian road fatality data were extracted from the Department of Infrastructure and Regional Development's online Australian Road Deaths Database, available at < http://www.bitre.gov.au/statistics/safety/fatal_road_crash_database.aspx > (BITRE 2014a).

Australian data for population and registered vehicles were obtained from the Australian Bureau of Statistics, (ABS 2014) and (ABS 2013) respectively. Estimates of vehicle kilometres travelled were obtained from the Bureau of Infrastructure and Regional Economics (BITRE 2012).

Acknowledgements

BITRE gratefully acknowledges the provision of police road crash data from:

Transport for NSW; VicRoads; Department of Transport and Main Roads, Queensland; Department of Planning, Transport and Infrastructure, South Australia; Western Australia Police; Department of State Growth, Tasmania; Department of Transport, Northern Territory; and Territory and Community Services Directorate, Australian Capital Territory.

Contents

At a glance	iii
Data definition and sources.....	iv
Acknowledgements	iv
 Rates per 100,000 population	 1
Rates per 10,000 registered vehicles.....	5
Rates per 100 million vehicle–kilometres–travelled	9
 References	 13

Tables

Table 1	Road deaths per 100,000 population – OECD nations and Australian states/territories, 2012.....	1
Table 2	Annual road deaths per 100,000 population – OECD nations and Australian states/territories, 1990 and 2000 to 2012	3
Table 3	Road deaths per 10,000 registered vehicles – OECD nations and Australian states/territories, 2012.....	5
Table 4	Annual road deaths per 10,000 registered vehicles – OECD nations and Australian states/territories, 1990 and 2000 to 2012.....	7
Table 5	Road deaths per 100 million vehicle–kilometres–travelled – OECD nations and Australian states/territories, 2012.....	9
Table 6	Annual road deaths per 100 million vehicle–kilometres–travelled – OECD nations and Australian states/territories, 1990 and 2000 to 2012	11

Figures

Figure 1	Road deaths per 100,000 population – OECD nations and Australian states/territories, 2012.....	2
Figure 2	Annual road deaths per 100,000 population – OECD quartiles and Australia, 1990 and 2000 to 2012	4
Figure 3	Road deaths per 10,000 registered vehicles – OECD nations and Australian states/territories, 2012.....	6
Figure 4	Annual road deaths per 10,000 registered vehicles – OECD quartiles and Australia, 1990 and 2000 to 2012	8
Figure 5	Road deaths per 100 million vehicle–kilometres–travelled – OECD nations and Australian states/territories, 2012.....	10
Figure 6	Annual road deaths per 100 million vehicle–kilometres–travelled – OECD quartiles and Australia, 1990 and 2000 to 2012	12

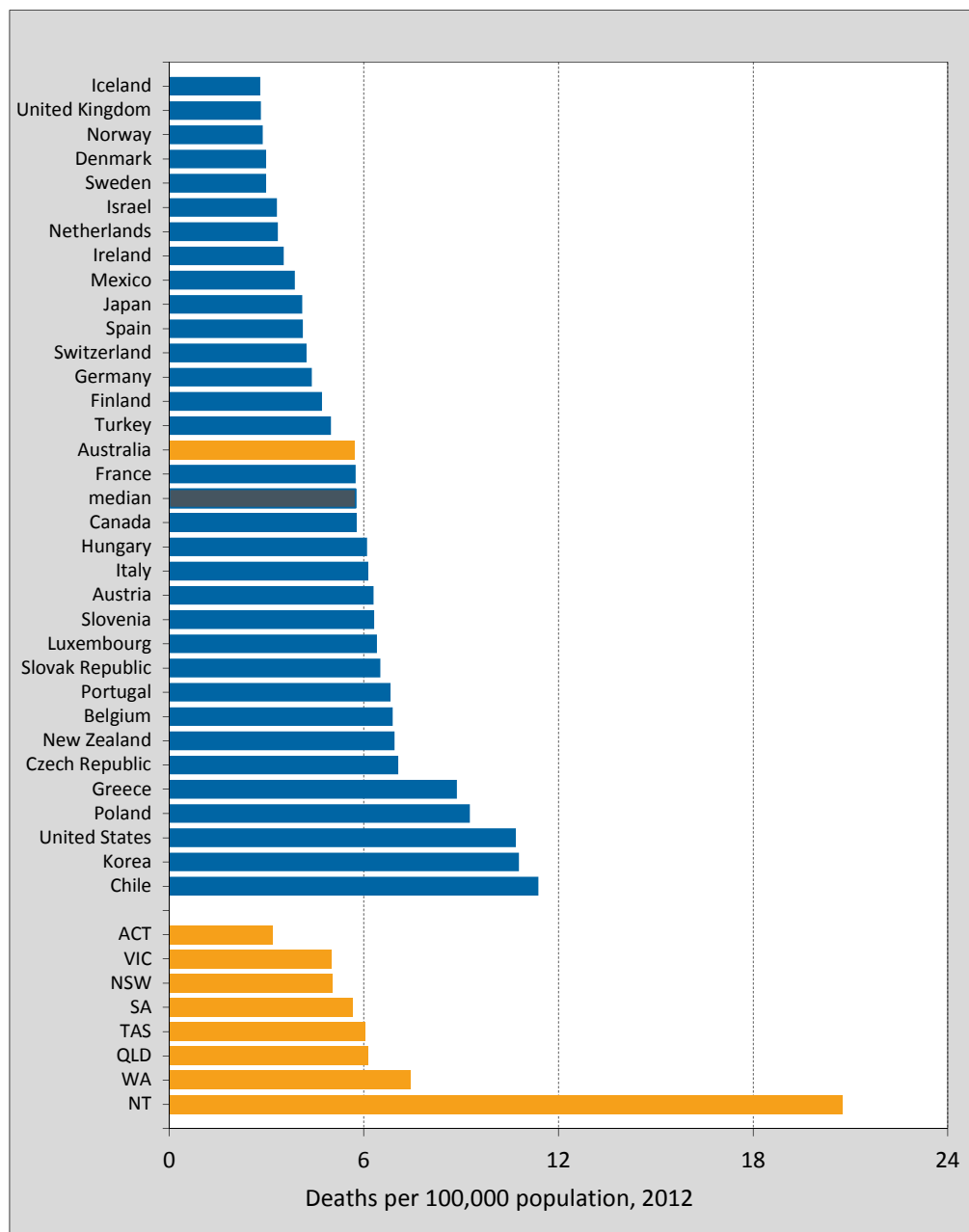
Road deaths per 100,000 population – OECD nations, 2012

The number of road deaths per population is a measure of the public health risk associated with road crashes.

Table 1 Road deaths per 100,000 population — OECD nations and Australian states/territories, 2012

<i>Nation</i>	<i>Road deaths</i>	<i>Population (000s)</i>	<i>Deaths per 100,000 population</i>
Iceland	9	320	2.82
United Kingdom	1,802	63,705	2.83
Norway	145	5,019	2.89
Denmark	167	5,592	2.99
Sweden	285	9,519	2.99
Israel	263	7,911	3.32
Netherlands	562	16,755	3.35
Ireland	162	4,587	3.53
Mexico	4,539	117,054	3.88
Japan	5,237	127,515	4.11
Spain	1,903	46,147	4.12
Switzerland	339	7,955	4.26
Germany	3,600	81,932	4.39
Finland	255	5,414	4.71
Turkey	3,750	75,176	4.99
Australia	1,299	22,710	5.72
France	3,653	63,519	5.75
median			5.75
Canada	2,104	34,880	6.03
Hungary	605	9,920	6.10
Italy	3,653	59,540	6.14
Austria	531	8,430	6.30
Slovenia	130	2,057	6.32
Luxembourg	34	531	6.40
Slovak Republic	352	5,408	6.51
Portugal	718	10,515	6.83
Belgium	767	11,128	6.89
New Zealand	308	4,433	6.95
Czech Republic	742	10,509	7.06
Greece	984	11,090	8.87
Poland	3,571	38,534	9.27
United States	33,561	313,914	10.69
Korea	5,392	50,004	10.78
Chile	1,980	17,403	11.38
ACT	12	375	3.20
VIC	282	5,633	5.01
NSW	369	7,307	5.05
SA	94	1,656	5.68
TAS	31	512	6.05
QLD	280	4,568	6.13
WA	182	2,438	7.47
NT	49	236	20.77

Figure 1 Road deaths per 100,000 population — OECD nations and Australian states/territories, 2012

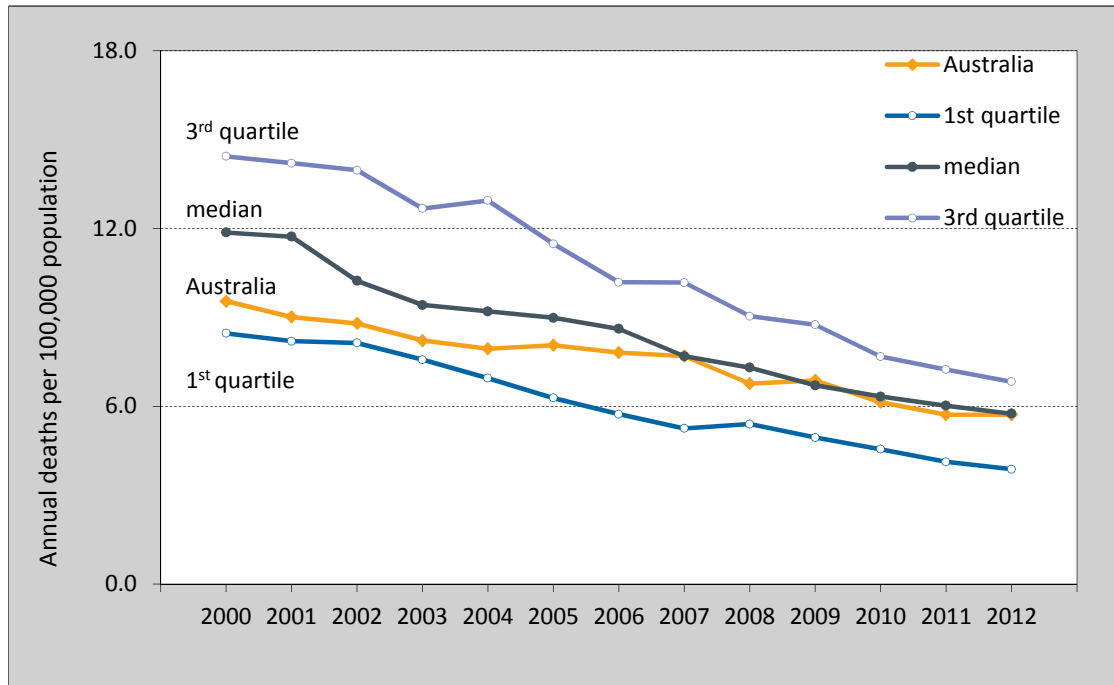


OECD nations, 1990 and 2000 to 2012

Table 2 Annual road deaths per 100,000 population — OECD nations and Australian states/territories, 1990 and 2000 to 2012

<i>Nation</i>	1990	2000	2001	2002	2003	2004	2005	2006	2007	2008	2009	2010	2011	2012
Iceland	9.4	11.4	8.4	10.1	8.0	7.9	6.4	10.2	4.8	3.8	5.3	2.5	3.8	2.8
United Kingdom	9.4	6.1	6.1	6.0	6.1	5.7	5.6	5.5	5.1	4.4	3.8	3.1	3.1	2.8
Norway	7.8	7.6	6.1	6.9	6.2	5.6	4.8	5.2	4.9	5.3	4.4	4.3	3.4	2.9
Denmark	12.3	9.3	8.0	8.6	8.0	6.8	6.1	5.6	7.4	7.4	5.5	4.6	3.9	3.0
Sweden	9.0	6.7	6.2	6.0	5.9	5.3	4.9	4.9	5.1	4.3	3.9	2.8	3.4	3.0
Israel	8.7	7.1	-	-	-	-	6.3	5.7	5.3	5.6	4.2	4.6	4.4	3.3
Netherlands	9.2	6.8	6.2	6.1	6.3	4.9	4.6	4.5	4.3	4.1	3.9	3.2	3.3	3.4
Ireland	13.6	10.9	10.6	9.6	8.4	9.2	9.5	8.4	7.7	-	5.3	4.7	4.1	3.5
Mexico	-	-	-	-	-	-	-	-	-	-	-	-	-	3.9
Japan	11.8	8.2	7.9	7.6	7.0	6.7	6.3	5.7	5.2	4.8	4.6	4.5	4.3	4.1
Spain	23.2	14.3	13.5	12.9	12.9	11.1	10.2	9.3	8.5	6.8	5.9	5.4	4.5	4.1
Switzerland	13.8	8.2	7.5	7.0	7.4	6.9	5.5	4.9	5.1	4.7	4.5	4.2	4.0	4.3
Germany	14.2	9.1	8.5	8.3	8.0	7.1	6.5	6.2	6.0	5.5	5.1	4.5	4.9	4.4
Finland	13.0	7.7	8.3	8.0	7.3	7.2	7.2	6.4	7.2	6.5	5.2	5.1	5.4	4.7
Turkey	-	-	-	-	-	-	-	-	-	-	-	-	-	5.0
Australia	13.7	9.5	9.0	8.8	8.2	7.9	8.1	7.8	7.7	6.8	6.9	6.1	5.7	5.7
France	19.8	13.7	13.7	12.8	10.0	9.2	8.7	7.6	7.5	6.9	6.8	6.3	6.3	5.8
Canada	14.3	9.5	8.9	9.3	8.8	8.6	9.0	8.9	8.4	7.3	6.6	6.6	5.8	6.0
Hungary	23.4	11.8	12.2	14.1	-	-	-	-	-	-	-	7.4	6.4	6.1
Italy	12.6	12.4	-	-	-	-	-	-	-	7.9	7.0	6.8	6.4	6.1
Austria	20.3	12.2	11.9	11.8	11.5	10.7	9.3	8.8	8.3	8.1	7.6	6.6	6.2	6.3
Slovenia	25.9	15.8	14.0	13.5	12.1	13.7	12.9	13.1	14.6	10.6	8.4	6.7	6.9	6.3
Luxembourg	18.6	17.6	15.9	13.9	11.7	10.9	10.1	-	-	7.4	9.6	6.3	6.4	6.4
Slovak Republic	-	-	-	-	-	-	-	-	-	-	-	-	-	6.5
Portugal	29.3	20.0	17.8	17.8	16.3	13.6	13.1	10.2	10.2	9.3	8.8	8.9	8.4	6.8
Belgium	19.9	14.3	14.4	13.1	11.7	11.2	10.4	10.1	10.1	8.8	8.7	7.7	7.8	6.9
New Zealand	21.5	12.0	11.7	10.2	11.4	10.7	9.8	9.4	10.0	8.6	8.9	8.6	6.4	6.9
Czech Republic	12.5	14.5	13.0	14.0	14.2	13.5	12.6	10.4	11.8	10.3	8.6	7.6	7.4	7.1
Greece	20.3	18.7	17.2	14.9	14.6	15.1	14.9	14.9	14.4	13.9	13.0	11.3	10.3	8.9
Poland	19.3	16.5	14.5	15.2	14.8	15.0	14.3	13.7	14.6	14.3	12.0	10.1	10.9	9.3
United States	17.9	14.9	14.8	15.0	14.8	14.6	14.7	14.3	13.7	12.3	11.0	10.7	10.4	10.7
Korea	33.1	21.8	17.1	15.2	15.1	13.7	13.2	13.1	12.7	12.0	11.9	11.1	10.5	10.8
Chile	15.7	14.3	-	-	-	-	-	-	-	-	-	12.1	11.9	11.4
ACT	9.2	5.7	5.0	3.1	3.4	2.7	7.8	3.9	4.1	4.0	3.4	5.3	1.6	3.2
VIC	12.5	8.7	9.3	8.2	6.8	7.0	6.9	6.7	6.4	5.8	5.4	5.3	5.2	5.0
NSW	13.7	9.4	8.0	8.5	8.1	7.7	7.6	7.4	6.4	5.4	6.4	5.7	5.0	5.0
SA	15.8	11.1	10.2	10.2	10.3	9.1	9.6	7.5	7.9	6.2	7.4	7.3	6.3	5.7
TAS	15.4	9.1	12.9	7.8	8.6	12.0	10.5	11.2	9.1	7.8	12.5	6.1	4.7	6.1
QLD	13.8	9.0	9.1	8.8	8.3	8.1	8.4	8.4	8.8	7.8	7.6	5.7	6.0	6.1
WA	12.2	11.3	8.7	9.3	9.2	9.0	8.1	9.8	11.2	9.4	8.5	8.4	7.6	7.5
NT	41.5	25.6	24.8	27.2	26.3	17.3	26.7	21.5	27.1	34.1	13.7	21.8	19.5	20.8

Figure 2 Annual road deaths per 100,000 population — OECD quartiles and Australia, 1990 and 2000 to 2012



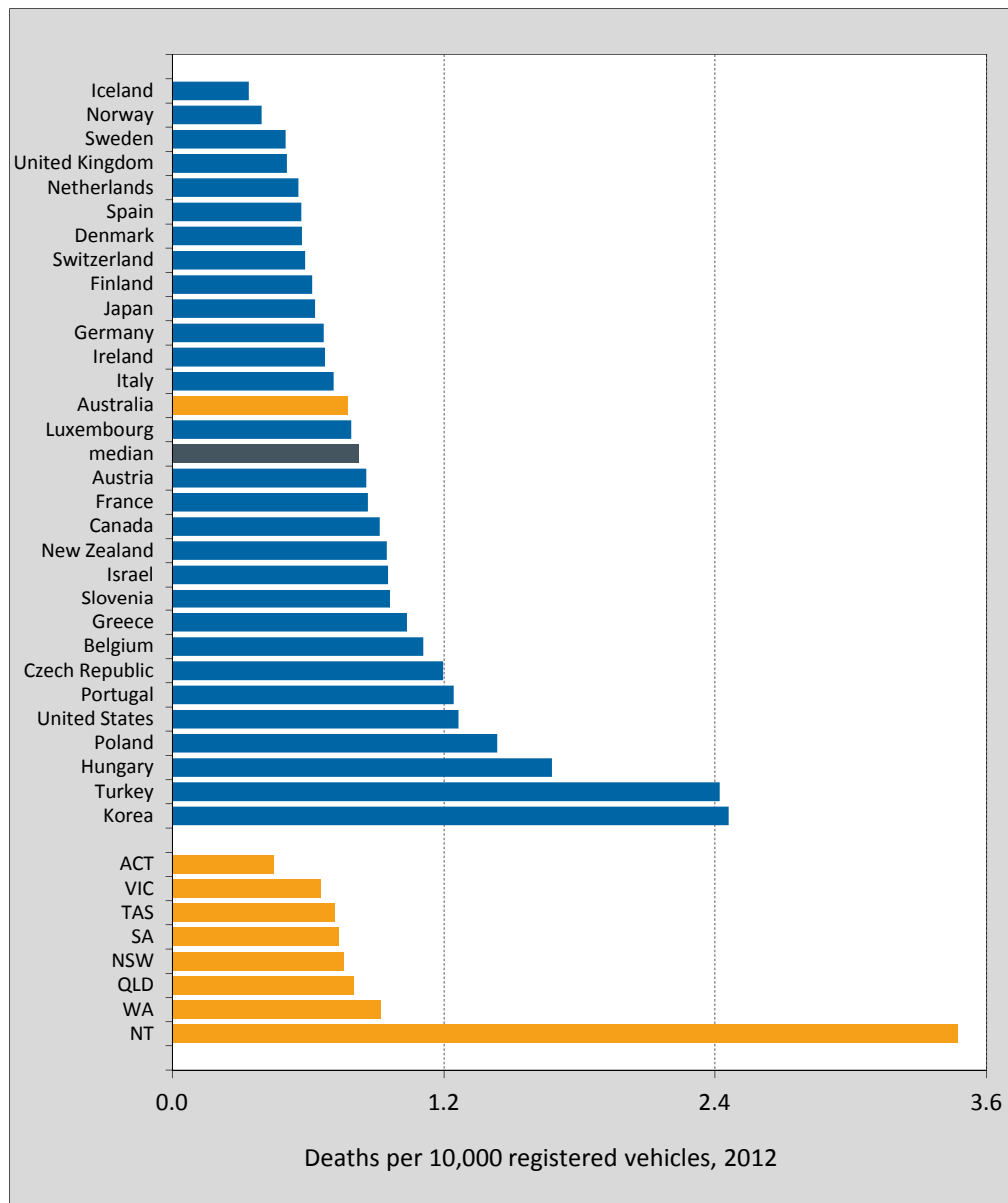
Road deaths per 10,000 registered vehicles – OECD nations, 2012

The number of road deaths per registered vehicle is a means of comparing road deaths among nations by taking into account their different levels of motorisation.

Table 3 Road deaths per 10,000 registered vehicles — OECD nations and Australian states/territories, 2012

<i>Nation</i>	<i>Road deaths</i>	<i>Total registered vehicles (1,000)</i>	<i>Deaths per 10,000 registered vehicles</i>
Iceland	9	266	0.34
Norway	145	3,672	0.39
Sweden	285	5,701	0.50
United Kingdom	1,802	35,582	0.51
Netherlands	562	10,095	0.56
Spain	1,903	33,373	0.57
Denmark	167	2,916	0.57
Switzerland	339	5,775	0.59
Finland	255	4,130	0.62
Japan	5,237	82,994	0.63
Germany	3,600	53,832	0.67
Ireland	162	2,403	0.67
Italy	3,653	51,292	0.71
Australia	1,299	16,742	0.78
Luxembourg	34	430	0.79
median			0.82
Austria	531	6,195	0.86
France	3,653	42,275	0.86
Canada	2,104	23,006	0.91
New Zealand	308	3,250	0.95
Israel	263	2,761	0.95
Slovenia	130	1,351	0.96
Greece	984	9,493	1.04
Belgium	767	6,921	1.11
Czech Republic	742	6,205	1.20
Portugal	718	5,775	1.24
United States	33,561	265,647	1.26
Poland	3,571	24,876	1.44
Hungary	605	3,598	1.68
Turkey	3,750	15,485	2.42
Korea	5,392	21,909	2.46
ACT	12	267	0.45
VIC	282	4,286	0.66
TAS	31	432	0.72
SA	94	1,275	0.74
NSW	369	4,870	0.76
QLD	280	3,492	0.80
WA	182	1,978	0.92
NT	49	141	3.47

Figure 3 Road deaths per 10,000 registered vehicles —
OECD nations and Australian states/territories, 2012

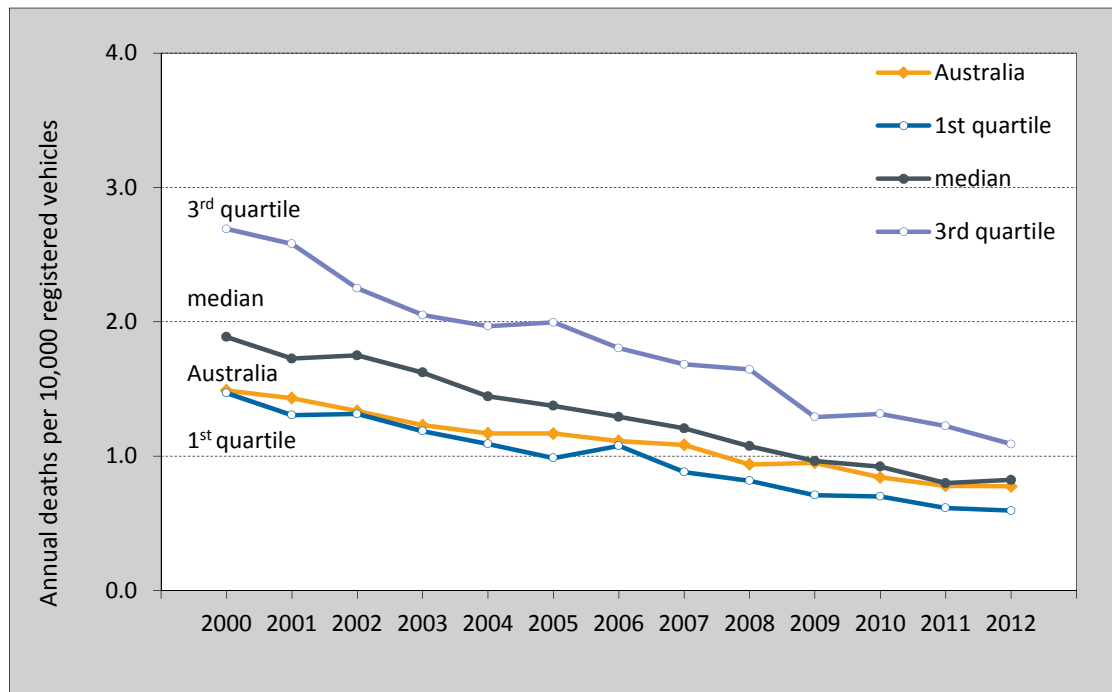


OECD nations, 1990 and 2000 to 2012

Table 4 Annual road deaths per 10,000 registered vehicles — OECD nations and Australian states/territories, 1990 and 2000 to 2012

<i>Nation</i>	<i>1990</i>	<i>2000</i>	<i>2001</i>	<i>2002</i>	<i>2003</i>	<i>2004</i>	<i>2005</i>	<i>2006</i>	<i>2007</i>	<i>2008</i>	<i>2009</i>	<i>2010</i>	<i>2011</i>	<i>2012</i>
Iceland	1.7	1.8	1.3	1.5	1.1	1.1	0.9	1.3	0.6	0.5	0.7	0.3	0.5	0.3
Norway	1.4	1.2	1.0	1.1	1.0	0.9	0.7	0.8	0.7	0.8	-	-	0.5	0.4
Sweden	1.7	1.2	1.1	1.1	1.0	0.9	0.8	0.8	0.9	0.7	0.6	0.5	0.6	0.5
United Kingdom	2.1	1.2	1.2	1.1	1.1	1.0	1.0	1.0	0.9	0.8	0.7	0.5	0.6	0.5
Netherlands	2.2	1.3	1.2	1.1	1.2	0.9	0.8	0.8	0.8	0.7	0.7	0.5	0.5	0.6
Spain	5.1	2.2	2.1	2.0	2.0	1.7	1.5	1.3	1.2	0.9	0.8	0.7	0.6	0.6
Denmark	2.9	2.0	1.7	1.8	1.7	1.4	1.3	1.2	1.5	-	-	0.9	0.8	0.6
Switzerland	2.2	1.2	1.1	1.0	1.1	1.0	0.8	0.7	0.7	0.7	0.6	0.6	0.6	0.6
Finland	2.8	1.5	1.6	1.5	1.4	1.3	1.3	1.1	1.2	1.0	0.8	0.7	0.7	0.6
Japan	1.9	1.2	1.1	1.1	1.0	0.9	0.9	0.8	0.7	0.7	0.6	0.6	0.6	0.6
Germany	1.9	1.4	1.3	1.2	1.2	1.0	1.0	0.9	0.9	0.9	0.8	0.7	0.8	0.7
Ireland	4.5	2.5	2.3	2.0	1.7	1.8	1.9	1.6	1.4	1.1	1.0	0.9	0.8	0.7
Italy	2.1	1.6	1.6	1.5	1.4	1.3	1.3	1.2	1.1	0.9	0.8	0.8	0.8	0.7
Australia	2.3	1.5	1.4	1.3	1.2	1.2	1.2	1.1	1.1	0.9	1.0	0.8	0.8	0.8
Luxembourg	3.3	2.4	2.1	1.8	1.5	1.4	1.3	1.1	1.2	0.9	-	-	0.8	0.8
Austria	3.7	1.8	1.7	1.7	1.7	1.6	1.4	1.3	1.2	1.2	1.1	0.9	0.9	0.9
France	3.6	2.3	2.2	2.0	1.6	1.5	1.4	1.2	1.2	1.1	1.1	1.0	1.0	0.9
Canada	2.3	1.6	1.5	1.6	1.5	1.4	1.5	1.5	1.3	1.2	1.0	1.0	0.9	0.9
New Zealand	3.3	1.8	1.7	1.5	1.6	1.5	1.3	1.3	1.3	1.1	1.2	1.2	0.9	0.9
Israel	-	-	-	-	-	-	2.1	1.9	1.7	1.7	1.3	1.4	1.3	1.0
Slovenia	6.9	3.2	2.8	2.6	2.2	2.5	2.3	2.2	2.4	1.7	1.3	1.0	1.1	1.0
Greece	6.2	3.1	2.7	2.2	2.1	2.1	2.0	1.9	1.8	1.7	1.5	1.3	1.2	1.0
Belgium	4.3	2.6	2.5	2.3	2.0	1.9	1.8	1.7	1.7	-	-	1.3	1.3	1.1
Czech Republic	3.3	3.2	2.9	3.0	3.0	2.8	2.5	2.0	2.2	1.9	1.5	1.3	1.3	1.2
Portugal	13.4	3.9	3.4	3.3	3.0	2.5	2.3	1.8	1.8	1.6	1.5	1.6	1.5	1.2
United States	2.4	1.9	1.9	1.9	1.8	1.8	1.8	1.7	1.6	1.4	1.3	1.3	1.2	1.3
Poland	8.1	4.5	3.8	3.8	3.5	3.4	3.2	2.9	2.9	2.5	2.1	1.7	2.3	1.4
Hungary	11.2	4.4	4.4	4.8	4.2	3.9	3.8	3.8	3.5	2.7	-	2.0	1.8	1.7
Turkey	-	-	-	-	-	-	-	-	-	-	-	-	-	2.4
Korea	28.9	6.9	5.1	4.4	4.1	3.6	3.4	3.3	3.2	2.9	-	2.6	2.4	2.5
ACT	1.6	-	0.8	0.5	0.5	0.4	1.2	0.6	0.6	0.6	0.5	0.7	0.2	0.4
VIC	2.1	-	1.3	1.2	0.9	1.0	0.9	0.9	0.9	0.8	0.7	0.7	0.7	0.7
TAS	2.4	-	1.8	1.1	1.2	1.7	1.4	1.5	1.2	1.0	1.6	0.8	0.6	0.7
SA	2.6	-	1.5	1.4	1.5	1.3	1.3	1.0	1.1	0.8	1.0	1.0	0.8	0.7
NSW	2.5	-	1.4	1.5	1.4	1.3	1.2	1.2	1.0	0.8	1.0	0.9	0.8	0.8
QLD	2.3	-	1.4	1.3	1.2	1.2	1.2	1.2	1.2	1.0	1.0	0.7	0.8	0.8
WA	1.9	-	1.2	1.3	1.3	1.2	1.1	1.2	1.4	1.2	1.0	1.0	0.9	0.9
NT	8.6	-	4.9	5.3	5.1	3.3	5.0	3.9	4.9	6.1	2.4	3.7	3.3	3.5

Figure 4 Annual road deaths per 10,000 registered vehicles —
OECD quartiles and Australia, 1990 and 2000 to 2012



Road deaths per 100 million vehicle–kilometres–travelled

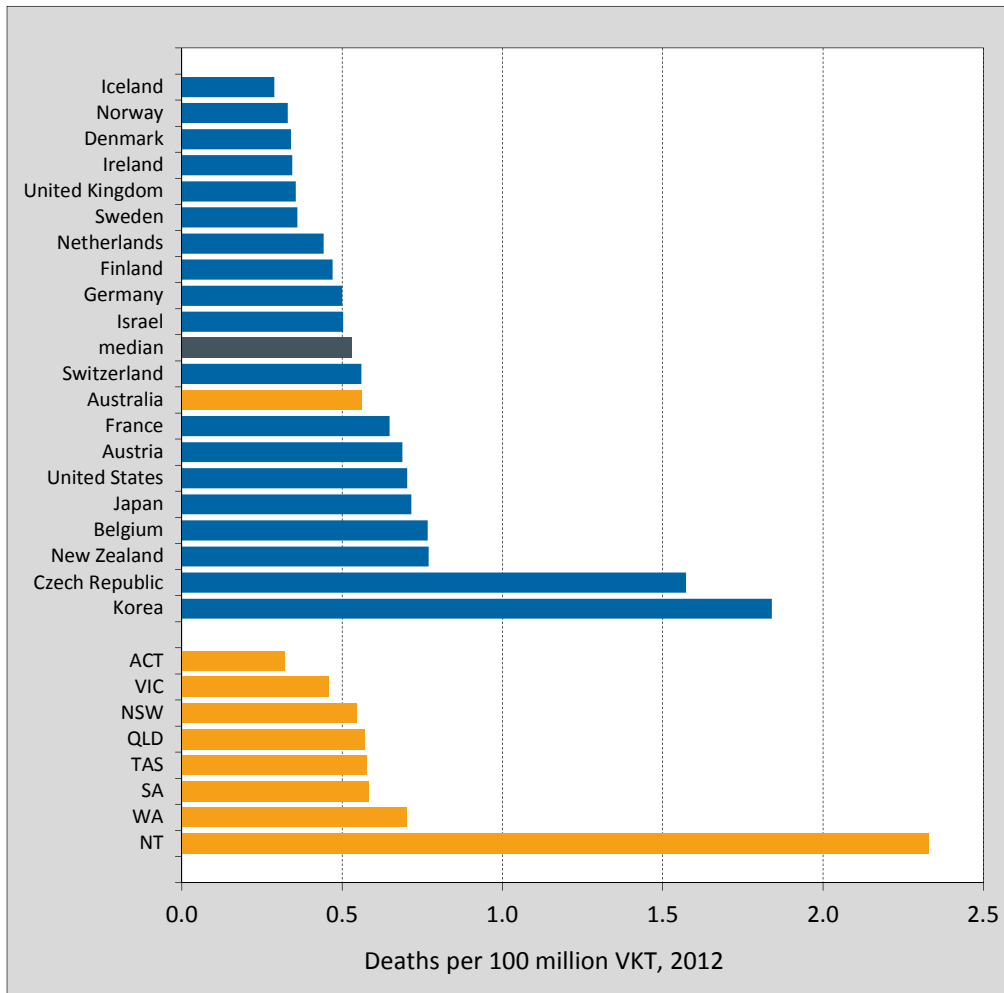
– OECD nations, 2012

The number of road deaths per vehicle kilometres travelled is a risk measure which takes account of the estimated amount of vehicle travel.

Table 5 Road deaths per 100 million vehicle–kilometres–travelled
— OECD nations and Australian states/territories, 2012

<i>Nation</i>	<i>Road deaths</i>	<i>Total VKT (millions)</i>	<i>Deaths per 100 million VKTs</i>
Iceland	9	3,116	0.29
Norway	145	43,952	0.33
Denmark	167	49,097	0.34
Ireland	162	47,088	0.34
United Kingdom	1,802	506,877	0.36
Sweden	285	-	0.36
Netherlands	562	127,210	0.44
Finland	255	54,235	0.47
Germany	3,600	719,300	0.50
Israel	263	52,300	0.50
median			0.53
Switzerland	339	60,548	0.56
Australia	1,299	231,655	0.56
France	3,653	563,700	0.65
Austria	531	77,185	0.69
United States	33,561	4,777,845	0.70
Japan	5,237	731,943	0.72
Belgium	767	99,977	0.77
New Zealand	308	40,012	0.77
Czech Republic	742	47,174	1.57
Korea	5,392	293,065	1.84
ACT	12	3,732	0.32
VIC	282	61,740	0.46
NSW	369	67,554	0.55
QLD	280	49,056	0.57
TAS	31	5,390	0.58
SA	94	16,124	0.58
WA	182	25,954	0.70
NT	49	2,104	2.33

Figure 5 Road deaths per 100 million vehicle–kilometres–travelled
— OECD nations and Australian states/territories, 2012

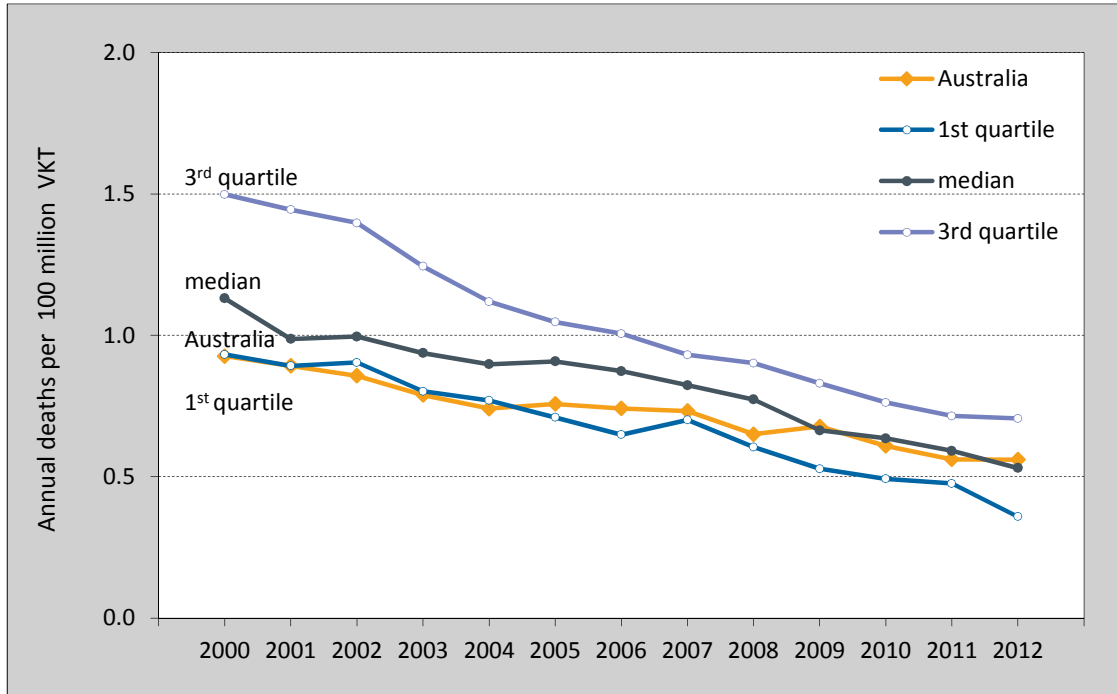


OECD nations, 1990 and 2000 to 2012

Table 6 Annual road deaths per 100 million vehicle–kilometres–travelled
— OECD nations and Australian states/territories, 1990 and
2000 to 2012

<i>Nation</i>	<i>1990</i>	<i>2000</i>	<i>2001</i>	<i>2002</i>	<i>2003</i>	<i>2004</i>	<i>2005</i>	<i>2006</i>	<i>2007</i>	<i>2008</i>	<i>2009</i>	<i>2010</i>	<i>2011</i>	<i>2012</i>
Iceland	1.5	1.4	1.0	1.2	0.9	0.9	0.7	1.0	0.5	0.4	0.5	0.3	0.4	0.3
Norway	1.2	1.0	0.8	0.9	0.8	0.7	0.6	0.6	0.6	0.6	0.5	0.5	0.4	0.3
Denmark	1.7	1.1	0.9	1.0	-	0.8	0.7	0.6	0.8	0.9	0.7	0.6	0.5	0.3
Ireland	1.9	1.2	1.1	1.0	0.9	0.9	0.9	0.8	0.7	0.6	0.5	0.4	0.4	0.3
United Kingdom	1.3	0.7	0.7	0.7	0.7	0.7	0.7	0.6	0.6	-	0.5	0.4	0.4	0.4
Sweden	1.2	0.8	0.8	0.7	0.7	0.6	0.6	0.6	0.6	0.5	0.4	0.3	-	0.4
Netherlands	1.4	0.9	0.8	0.8	0.8	-	-	-	-	0.5	0.5	0.4	0.4	0.4
Finland	1.6	0.8	0.9	0.9	0.8	0.7	0.7	0.6	0.7	0.6	0.5	0.5	0.5	0.5
Germany	1.4	1.1	1.0	1.0	1.0	0.8	0.8	0.7	0.7	0.6	0.6	0.5	0.6	0.5
Israel	-	-	-	-	-	1.1	1.0	0.9	0.8	0.9	0.6	0.7	0.7	0.5
Switzerland	1.9	1.1	1.0	0.9	1.0	0.9	0.7	0.6	0.6	0.6	0.6	0.5	0.5	0.6
Australia	1.4	0.9	0.9	0.9	0.8	0.7	0.8	0.7	0.7	0.7	0.7	0.6	0.6	0.6
France	2.6	1.6	1.5	1.4	1.1	1.0	1.0	0.8	0.8	0.8	0.8	0.7	0.7	0.6
Austria	3.2	1.5	1.4	1.4	1.3	1.3	1.1	1.0	0.9	0.9	0.8	0.7	0.7	0.7
United States	1.3	0.9	0.9	0.9	0.9	0.9	0.9	0.9	0.8	0.8	0.7	0.7	0.7	0.7
Japan	2.3	1.3	1.3	1.2	1.1	1.1	1.0	1.0	0.9	0.8	0.8	0.8	0.8	0.7
Belgium	2.8	1.6	1.6	1.5	1.3	1.2	1.1	1.1	1.1	1.0	1.0	0.9	0.9	0.8
New Zealand	-	1.4	1.3	1.1	1.2	1.1	1.0	1.0	1.0	0.9	1.0	0.9	0.7	0.8
Czech Republic	4.8	3.7	3.2	3.3	3.2	2.9	2.6	2.1	2.3	1.9	1.6	1.6	1.6	1.6
Korea	-	4.9	3.3	2.8	2.6	2.3	1.8	1.9	1.9	1.8	2.0	1.9	1.8	1.8
Canada	-	0.9	0.9	0.9	0.9	0.9	0.9	0.9	0.8	0.7	0.7	0.7	0.6	-
Slovenia	6.5	2.7	2.3	2.2	1.7	1.8	1.7	1.6	1.7	1.2	1.0	0.8	0.8	-
ACT	1.0	0.6	0.5	0.3	0.3	0.3	0.7	0.4	0.4	0.4	0.3	0.5	0.2	0.3
VIC	1.2	0.8	0.9	0.8	0.6	0.6	0.6	0.6	0.6	0.5	0.5	0.5	0.5	0.5
NSW	1.6	1.0	0.9	0.9	0.9	0.8	0.8	0.8	0.7	0.6	0.7	0.6	0.5	0.5
QLD	1.4	0.8	0.8	0.8	0.7	0.7	0.7	0.7	0.8	0.7	0.7	0.5	0.6	0.6
TAS	1.7	0.9	1.3	0.8	0.8	1.1	1.0	1.1	0.9	0.7	1.2	0.6	0.4	0.6
SA	1.7	1.1	1.0	1.0	1.0	0.9	0.9	0.8	0.8	0.6	0.8	0.7	0.6	0.6
WA	1.2	1.0	0.8	0.8	0.8	0.8	0.7	0.9	1.0	0.8	0.8	0.8	0.7	0.7
NT	4.7	2.8	2.8	3.1	2.9	1.9	2.9	2.4	3.0	3.7	1.5	2.4	2.1	2.3

Figure 6 Annual road deaths per 100 million vehicle-kilometres-travelled
— OECD quartiles and Australia, 1990 and 2000 to 2012



References

ABS 2014, Australian Bureau of Statistics, Australian Demographic Statistics, December 2013, Cat no 3101.0, ABS Canberra.

ABS 2013, Australian Bureau of Statistics, Motor Vehicle Census, Cat no 9309.0, ABS Canberra.

BITRE 2014, Australian Road Deaths Database, BITRE Canberra,
<http://www.bitre.gov.au/statistics/safety/fatal_road_crash_database.aspx>.
Accessed 16 July 2014

BITRE 2012, State and Capital City vehicle kilometres travelled, 1990–2012, Information Sheet 44, BITRE Canberra.

IRTAD 2014a, International Road Traffic Accident Database, (member site)
<<http://stats.oecd.org/>>. Accessed 16 July 2014.

IRTAD 2014b, IRTAD 2014 Annual Report, OECD/ITF

OECD 2014, OECD.Stat Extracts (public site) <<http://stats.oecd.org/>>. Accessed 16 July 2014