

Junction



New numerotation: Changes to traffic signs

The gradual opening to traffic of the different sections of Autoroute 30 result in changes to the traffic signs on a large part of Autoroute 30 and in the periphery. This special issue will let you understand the changes that have already been made to the traffic signs in place by the Ministère des Transports du Québec and those to come.

Changes already made

The part of Autoroute 30 from Saint-Constant to Candiac has been open to traffic since November 2010. The opening of this new autoroute section required some changes to the destination signs to identify this new infrastructure clearly. In addition, the autoroute section between the new Autoroute 30 and Route 132 in Saint-Constant has become Autoroute 730. This portion was previously part of Autoroute 30. Consequently, Exit 90 of the former Autoroute 30 has become Exit 2 of Autoroute 730.

Changes to come

The opening to traffic of the Jean-Leman section in fall 2011 will result in the renumbering, by the Ministère des Transports du Québec, of all the exits of Autoroute 30 between Châteauguay and Sorel-Tracy. Finally, the exit numbers of Autoroute 30 between Vaudreuil-Dorion and Châteauguay will be added for the opening of this section scheduled for the end of 2012. The exits will be renumbered according to the new point of origin, kilometre 0, which will be located at the intersection of Autoroutes 40 and 30, in Vaudreuil-Dorion. The current Autoroute 540 of this sector then will be part of Autoroute 30. The exit numbers of this section will be changed when the section between Vaudreuil-Dorion and Châteauguay is opened.

Transition period

The MTQ has provided for an adjustment period during which the old and new numbers will be shown on the sign indicating the exit. These indications will remain in place for a certain time to allow the road users to assimilate the changes made to the signs.

Major destinations

In addition to the renumbering of the exits on 141 kilometres of autoroutes, the posting of the major destinations will have to be changed at several strategic interchanges, particularly those of Autoroutes 10, 15, 20, 40 and 530.

The destinations located at both ends of Autoroute 30 will become the major destinations posted on the Autoroute 30 signs, i.e. Vaudreuil-Dorion westbound and Sorel-Tracy eastbound.

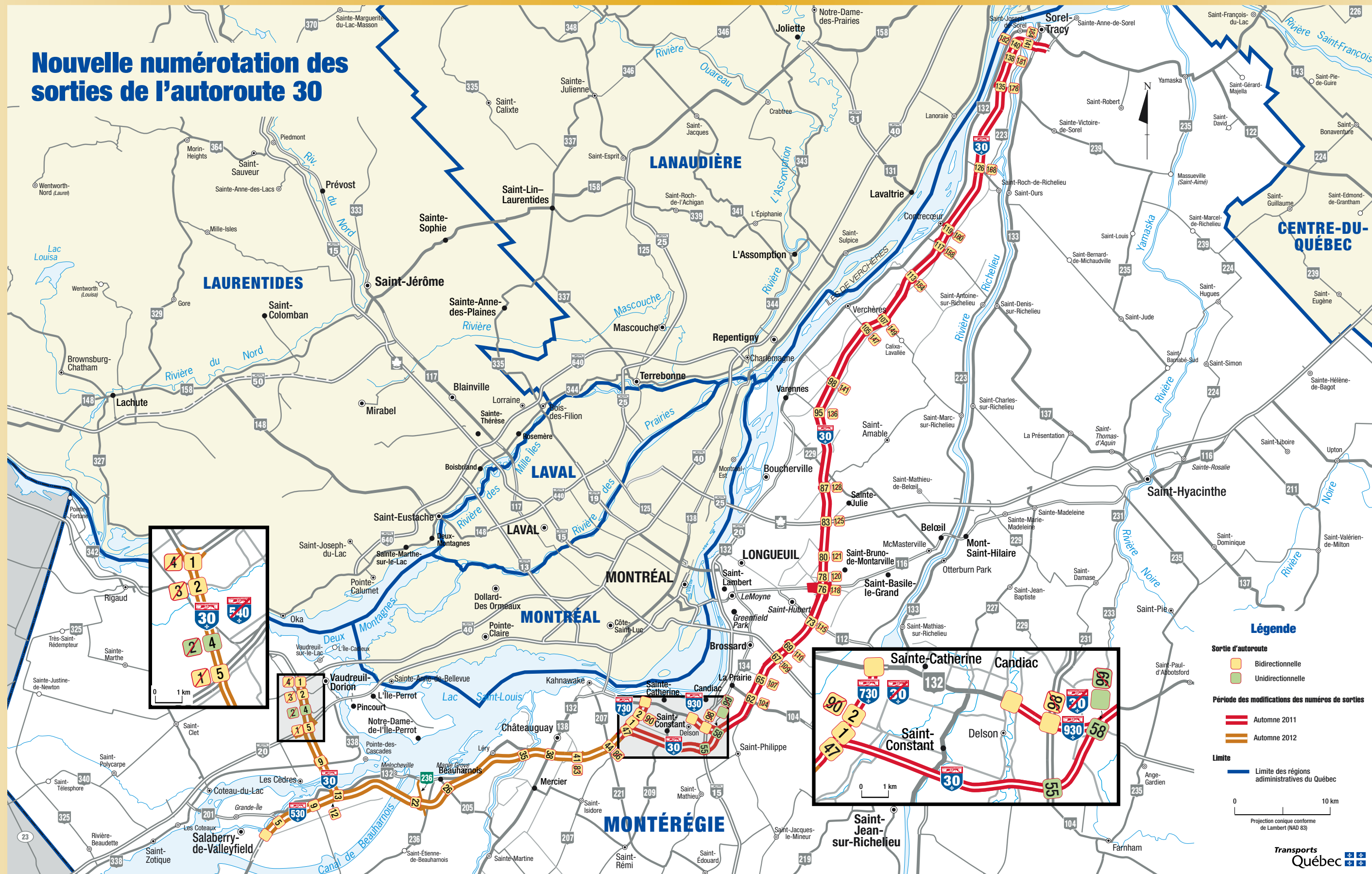
Why change the exit numbers?

The exit numbers are being changed with the aim of standardizing the signs on the Québec road network and adapting to North American practices. Thus, in Québec, these numbers are determined precisely: the point farthest west or farthest south is chosen as the kilometrage starting point. Each exit number thus includes the number of kilometres driven since the beginning of the road. This method makes it possible to know the number of kilometres between each pair of exits.

Spread the word!

We strongly urge all our partners to circulate the necessary information to their clientele in a timely manner. We encourage them to modify their communications tools to facilitate users' trips (website, directions to a business, etc.).

Nouvelle numérotation des sorties de l'autoroute 30



Légende

Sortie d'autoroute

- Bidirectionnelle
- Unidirectionnelle

Période des modifications des numéros de sorties

- Automne 2011
- Automne 2012

Limite

- Limite des régions administratives du Québec

0 10 km
Projection conique conforme de Lambert (NAD 83)

Renumbering of the Autoroute 30 exits

Current exits	New exits: km 0 to A-40	Description
4	1	Autoroute 40
3	2	Boulevard de la Cité-des-Jeunes (route 340)
2	4	Rue Henry-Ford (route 342, route Harwood)
1	5	Autoroute 20
	9	Route 338
	13	Autoroute 530 ouest, Salaberry-de-Valleyfield
	22	Nouvelle route 236
	26	Chemin de la Beauce (route 205)
	35	Chemin Haute-Rivière
	38	Boulevard Saint-Jean-Baptiste (route 132-138)
83	41	Boulevard Industriel
86	44	Route 207-221
	47	Autoroute 730 nord, Saint-Constant
	55	Autoroute 15
	58	Autoroute 930 ouest, Candiac
104	62	Chemin Saint-Jean (route 104)
107	65	Boul Matte, Boul. de Rome
109	67	Autoroute des Cantons-de-l'Est (autoroute 10), Montréal/Sherbrooke
110	69	Grande Allée
115	73	Chambly, Boul. Cousineau (route 112), Ch. de Chambly
118	76	Boul. des Promenades, Pont Jacques-Cartier, (route 116), Beloeil
120	78	Boul. Clairevue, Saint-Bruno-de-Montarville, Centre-ville
121	80	Montée Montarville Boul. De Montarville,
125	83	Autoroute Jean-Lesage (autoroute 20) Montréal/Québec
128	87	Varenes, St-Amable/Ste-Julie
136	95	Chemin-de-la-Butte-aux-Renards, Montée de Picardie/Varenes
141	98	Montée de la Baronnie
147	105	Verchères
149	107	Calixa-Lavallée/St-Marc-sur-Richelieu
154	113	Montée Lapierre, Contrecoeur
158	117	St-Antoine-sur-Richelieu, Montée de la Pomme-D'or, Contrecoeur
160	119	Rue St-Antoine, Contrecoeur
168	126	Montée St-Roch, ContrecoeurSt-Roch-de-Richelieu
178	135	Chemin du Golf
181	138	Boul. de Tracy, Boul. des Érables
182	140	Boul. St-Louis
184	141	Saint-Joseph-de-Sorel, Route 223, Chemin St-Roch

Autoroute 530

Current exits	New exits: km 0 to Chemin Larocque	Description
-	-	Chemin Larocque (route 132-201)
-	-	Début des voies divisées
-	5	Boul. Mgr-Langlois (route 132-201)
-	9	Rue Pie-XII (60990)
-	12	Autoroute 30

Autoroute 730

Current exits	New exits: km 0 to A-30	Description
-	1	Autoroute 30
90	2	Montée St-Régis (St-Constant)
-	-	Route 132

Autoroute 930

Current exits	New exits: km 0 to A-15	Description
-	-	Chemin St-François-Xavier
98	-	Autoroute 15
99	-	Boul. Jean-Leman, Candiac, St-Philippe

To reach us

Bureau de projet de l'autoroute 30
500 René-Lévesque Blvd. West, Suite 13.10
Montréal, QC H2Z 1W7

Telephone: 514-873-0234
Fax: 514-864-2155

E-mail: bureaudeprojeta30@mtq.gouv.qc.ca
Web site: www.autoroute30.qc.ca

Legal deposit, Library and Archives Canada
ISSN 1715-7501