

# Junction 30



MONTHLY NEWSLETTER CONCERNING  
THE COMPLETION OF AUTOROUTE 30

## Back to work!

Several construction projects have emerged since last spring, namely those involving deforestation, the continuation of work on the 15/30 interchange, and the start of the work to relocate Route 236 in Beauharnois.

Furthermore, the PPP process has been well under way since the Request for Proposals. Major changes were made with regard to the toll system, which has now been reduced to apply to a one-way trip over the bridge spanning the St. Lawrence.

Major new work sites are emerging this fall: the second phase of the work on chemin de la Haute-Rivière, and the start of work on a Canadian Pacific temporary detour bridge over Autoroute 15. The work scheduled for this year will bring us even closer to our completion objective.

This edition of *Jonction 30* contains more information regarding the projects that are on the calendar this fall. So far, the ministère des Transports du Québec (MTQ) has invested more than \$45 M in the completion of the Eastern section of Autoroute 30 and more than \$80 M in the Western section.

We hope that the amounts allocated for the different projects, including those in progress and those that are upcoming – will convince you of the MTQ's commitment to the completion of the A-30!



**Paul-André Fournier**  
Director of the Bureau de projet  
de l'autoroute 30



**FOR EVERYTHING  
YOU NEED TO KNOW  
ABOUT AUTOROUTE 30**

A single address:

**[www.autoroute30.qc.ca](http://www.autoroute30.qc.ca)**

Add your name to the list  
to be one of the first receive  
the **Junction 30 Newsletter**

and to browse the site of one  
of the biggest infrastructure  
projects in Québec!

## Warm fall work sites

### Haute-Rivière – Phase 2

The work involving the relocation and stratification of chemin de la Haute-Rivière in Châteauguay continues this fall. Phase 1, which was completed last year, consisted mainly of adding build-up to enable the runoff and consolidation of the clay with low bearing capacity in the future location of chemin de la Haute-Rivière.

Now that the build-up has been completed and the clay soil is stable, the MTQ is preparing to launch Phase 2. This will involve excavating a portion of the excess granular materials deposited for the consolidation last fall in order to enable the A-30 to run underneath Chemin de la Haute-Rivière. We will then construct the chemin de la Haute-Rivière roadway to the Route 132 intersection (boul. René-Lévesque), which will be redesigned with the addition of traffic lights. This work will cost approximately \$6 M and will begin in the coming weeks. The new chemin de la Haute-Rivière, which crosses the A-30, is expected to be completed in summer 2008.

### Route 236 – Phase 1

The new Route 236, which has been moved west in order to detour the Beauharnois residential district, will cover approximately 2.5 kilometres between Route 132 and the future A-30 interchange in Beauharnois.

The first step of the work, which is estimated at \$6 M, began with preparations in early August. At the end of this phase, which is anticipated to be completed by summer 2008, the first kilometre of this new lane will be open to traffic. More specifically, it will allow access to the Beauharnois hydroelectric plant. It will also be used by the private partner as a private access road to the eastern base of the bridge.

The second phase will take place in fall 2008 with the construction of the missing kilometres leading to the future interchange with the A-30. Clay consolidation is also expected in the railway area operated by CSX; an area that will be crossed by Route 236.

### Canadian Pacific Bridge

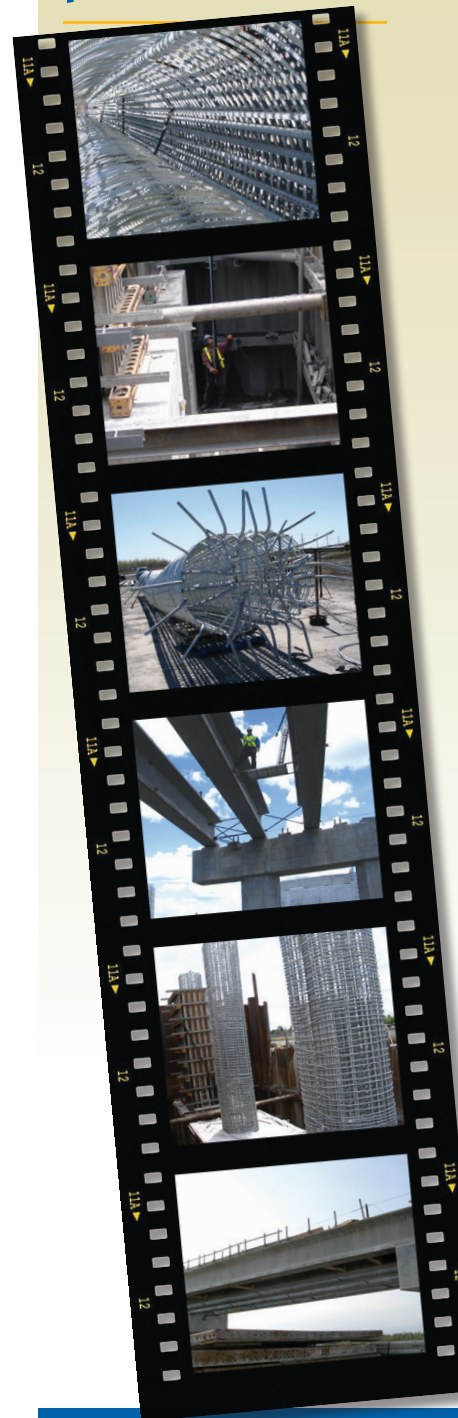
An overpass is being erected north of the site of the 15/30 interchange in Candiac to carry the Canadian Pacific railway over the A-15. Since this bridge is located very close to the future A-30 and will have to be resurfaced in the near future, we will use the resources at the interchange site for the reconstruction. Furthermore, the A-15 will be corrected in order to soften the existing vertical profile of this highway segment, thereby increasing visibility, and as such, the safety of motorists.

In 2007-2008, construction will take place on a temporary bridge to detour the railway lines; a project that is estimated at \$4 M. The work will begin in October and is expected to be completed in June 2008.



*The Canadian Pacific Bridge must be completely overhauled as part of the work on the 15/30 interchange.*

## The 15/30 work site in pictures



### To reach us

Bureau de projet de l'autoroute 30  
500 René-Lévesque Blvd. West, Suite 13.10  
Montréal, QC H2Z 1W7

Telephone: 514-873-0234  
Fax: 514-864-2155

E-mail:  
Web site:

Legal deposit, National Library of Canada  
ISSN 1715-7501