



On your way into winter!

IN THIS ISSUE

- DO IT SAFELY!
- ARE YOU BEING TAILGATED?
- IT'S WINTER! CHANGE THE WAY YOU DRIVE.

A new driver's licence

To improve the **quality** and **security** of its products, the SAAQ has made recent improvements to driver's licences, probationary licences and taxi driver licences:

- a new more durable material;
- superior print quality;
- security elements that are invisible to the naked eye.

Remember, a driver's licence is an official document that identity thieves are keen to get their hands on.

BE ON THE LOOKOUT!

For a clearer view

Did you know that tinting of the front side windows of a vehicle is **prohibited** if less than 70% of light can filter through?

Automobile windows are already tinted by the manufacturer when a vehicle rolls off the assembly line. Combined with an additional window tinting film, light transmittance may be less than 70%, and your safety may be at risk. If light transmittance is less than 70%, you will be liable for a minimum \$100 **fine**.





Demerit points

If you have been fined for failing to stop before **turning right at a red traffic light** (where turning is allowed), how many demerit points will be entered on your driving record?

ANSWER: 3 POINTS

Remember!

Those points remain on your driving record **for 2 years**.

DID YOU KNOW THAT?

Turning right on a red light is **not mandatory**. So:

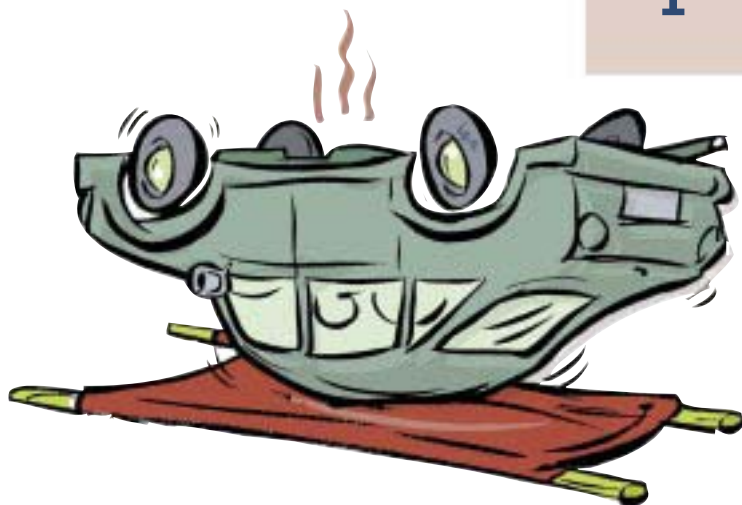
- **respect the decision** of a driver who chooses not to turn;
- **do not sound your horn** to force a driver to move ahead; and
- **remain courteous!**

Are the days of your vehicle numbered?

Donate your car to The Kidney Foundation of Canada's **Kidney-Car** Program.

To find the Kidney-Car number for your region:

- call **1 888 228-8673**;
- or
- go to **www.kidneyquebec.ca**



**SPEEDING
can slow
you down
permanently**



If your experience car trouble



If, while on the road, your automobile **breaks down**:

- steer your vehicle onto the shoulder as far away from the roadway as possible;
- put on your hazard signals;
- remain in the vehicle until help comes, if you are at a safe location.

If there is a **risk of collision**:

- get out of your vehicle;
- lift the hood;
- go to a safe location.

DID YOU KNOW THAT?

On an expressway, driving on the shoulder to reach the next exit is **prohibited**.

Do it safely!

If you are pulling a **trailer**, ensure that:

- the coupling system and safety chains are in good condition, firmly attached and used correctly;
- your vehicle and trailer are in good operating condition and have been inspected by a professional.



ARE YOU BEING TAILGATED?

- **Remain calm;**
- **Be prepared to act if a tailgater decides to overtake your vehicle on a hazardous stretch of the road;**
- **As soon as the situation permits, slow down and allow the driver to pass.**



DID YOU KNOW THAT...?

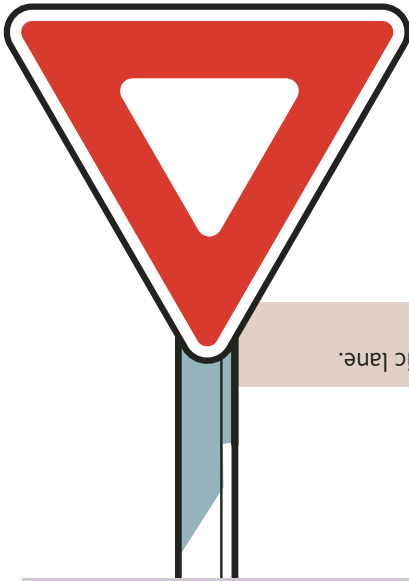
If you **own an all-terrain vehicle (ATV) or snowmobile**, you must hold a civil liability insurance policy with a coverage limit of at least \$500,000.

For injury caused to others, you must take out insurance coverage that is available through a private insurance company.

For injuries or property damage you may incur, you must take out **additional** insurance coverage, also available through a private insurance company.

DON'T LET YOUR CELL PHONE DRIVE YOU





Listen up

What does this sign mean?

- A. Prepare to stop abruptly.
- B. You are entering a priority traffic lane. You must yield and adjust your speed.
- C. This sign is used only in Europe.

The correct answer is B. You are entering a priority traffic lane. You must yield and adjust your speed.

For more on road signs and traffic signals:
www.mtq.gouv.qc.ca/en

Check your driving knowledge

You are driving in an unfamiliar city. There is no speed limit posted. What is the maximum speed you can drive?

- A. 30 km/h.
- B. 50 km/h.
- C. 70 km/h.

The correct answer is B. 50 km/h. Unless another speed limit is posted, the maximum you can drive in a city is 50 km/h.

Whether you are an **experienced** or **novice driver**, test your driving knowledge by taking the quiz at: www.saaq.gouv.qc.ca/en

Anywhere in the world



Whether you're a **driver, passenger, pedestrian, cyclist, moped rider or motorcyclist**, do you know that you are covered if you're injured in a traffic accident anywhere in the world?

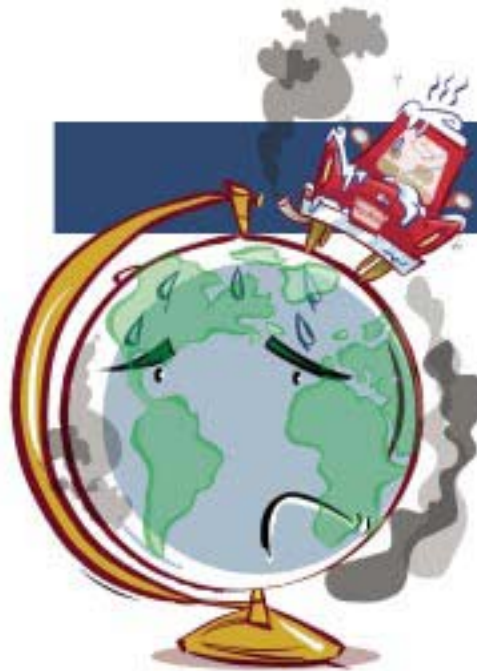
Thanks to the protection **Québec's public automobile insurance plan** provides, all Quebecers are insured, regardless of fault.

Who handles compensation?

- If you are injured, it is the SAAQ.
- If the vehicle is damaged, it is your private insurance company.

To find out more about Québec's public automobile insurance plan, go to:

www.saaq.gouv.qc.ca/en/



IT'S WINTER! CHANGE THE WAY YOU DRIVE.

For many of us, winter is the season of **remote-start** for our vehicles and **idling the engine to warm it up**, sometimes for many long minutes.

Did you know that this action, repeated daily, is **harmful to the environment**? Not to mention the role it plays in contributing to smog, climate change and acid rain...

The advantages of short-idling an engine

- It reduces gas consumption;
- it saves money;
- it reduces engine wear;
- it also protects public health, because your vehicle is not emitting carbon dioxide (CO₂), the principal greenhouse gas involved in climate change.

A few tips

1. After you start the vehicle, avoid accelerating quickly during the first few kilometres to allow the moving parts of your engine to warm up.
2. Turn off the engine if you are parked for longer than 10 seconds.
3. Avoid using a remote starter.
4. In cold weather, use a timer and engine block heater. Have the block heater come on 2 hours before you're ready to start the car.

This winter, before you take the vehicle out, don't forget a snow brush, windshield scraper and shovel.



Yes. I also have to check that my heater and window defroster are working properly.

You can never be too careful. Clear snow and ice from your vehicle.

Heavy Vehicle Drivers, Slow Down!

Braking on a slippery road makes handling a heavy vehicle difficult. At least twice the normal **braking distance** may be required to brake safely.

Remember:

- on a wet road, reduce your speed by one-third;
- on snow, reduce it by half;
- on ice, reduce it even more.



TO CONTACT US

Call Centres

Monday through Friday

General information: from 8 am to 5:30 pm

Accident victims' compensation: 8:30 am to 5 pm

Automated telephone response

(toll free)

Monday through Saturday, from 7:30 to 11 pm

Sunday, from noon to 11 pm

- Make, change, check or cancel an appointment for a driving test – knowledge or road test;
- cancel your driver's licence;
- notify us of storage of your vehicle;
- order a copy of your driving record;
- find out the location and business hours of SAAQ service outlets.

(514) 873-7620 in Montréal;

(418) 643-7620 in Québec (city and vicinity);

or

1-800-361-7620, toll free from elsewhere in Québec, Canada and USA.

Automated telephone response

24 hours, 7 days a week

- Check an individual's right to register a vehicle before its sale or purchase is completed;
- check that a prospective driver's licence is valid before lending or renting your vehicle.

One number: 1 900 565-1212 (\$1.50 per call)

Produced by the Direction des communications.

E-mail any comments to us at: courrier@saaq.gouv.qc.ca

Version française disponible sur demande.

© Société de l'assurance automobile du Québec, 2006

Reproduction is authorized on the condition the source is credited.

ISSN: 1705-9283

Illustrations: Paul Bordeleau



HAVE YOU MISSED AN ISSUE?

The *info SAAQ* newsletter is published quarterly. The latest issue is enclosed when you receive a payment notice to renew the following:

- driver's licence;
- vehicle registration.

To consult the **electronic editions** of all issues in PDF, go to: www.saaq.gouv.qc.ca/en/infosaaq

Read on!



QUICK 'N' EASY!

Go to www.saaq.gouv.qc.ca/en to conduct these operations online:

- have your **change of address** recorded;
- make, change, check or cancel an **appointment for a driving test – knowledge or road test**
- **pay for renewal** (if you are a member of the Caisses Desjardins or a client of the National Bank of Canada) of your:
 - driver's licence;
 - vehicle registration;
 - disabled parking permit;
- check the **validity of a driver's licence**;
- check if a **vehicle can be licensed**;
- order a **copy of your driving record**;
- notify us of **storage of your vehicle**;
- have your **vehicle removed from storage** and licensed for road use;
- notify us of **vehicle discarding**

These services are available online:

Monday through Saturday, from 7 am to 11 pm and Sunday, from noon to 11 pm

Société de l'assurance
automobile

Québec

