

POINT DE RELEVÉ NO. 5

Histogram Start Time 12:16:35 September 5, 2007
Histogram Finish Time 22:01:46 September 5, 2007
Number of Intervals 7022 at 5 seconds
Range Geo :254 mm/s
Sample Rate 2048sps
Job Number: 1

Serial Number BE10301 V 8.01-8.0 MiniMate Plus
Battery Level 6.1 Volts
Calibration June 24, 2005 by Instantel.Inc
File Name L301BU1Z.FN0

Notes

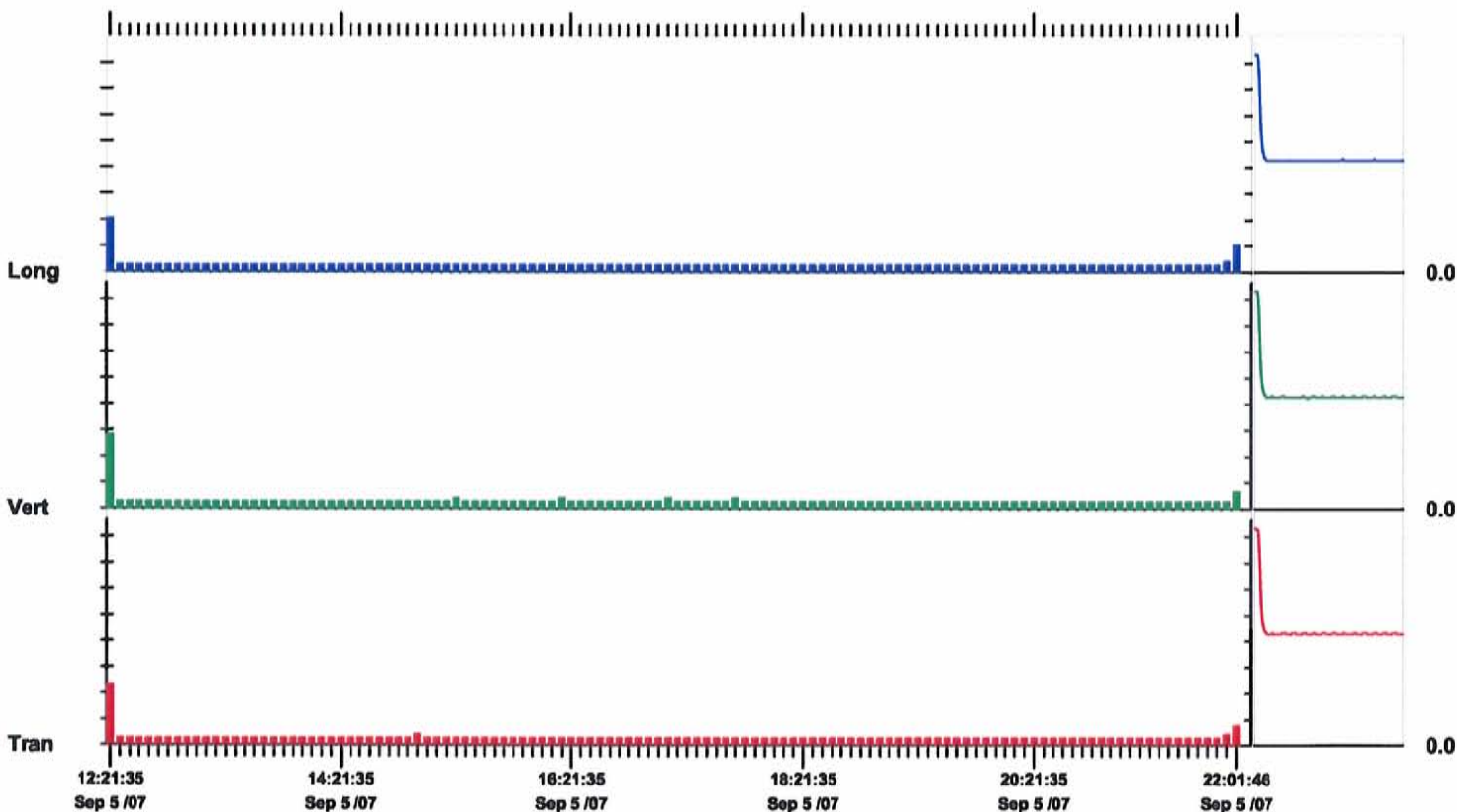
Endroit 386, rue des Érables (Charlemagne)
 Client: Agence métropolitaine des transports (AMT)
 Utilisateur: Dany Thériault
 Source:

Notes

Post Event Notes

	Tran	Vert	Long	
PPV	2.29	2.79	2.03	mm/s
ZC Freq	3.5	3.3	3.6	Hz
Date	Sep 5 /07	Sep 5 /07	Sep 5 /07	
Time	12:20:05	12:20:05	12:20:05	
Sensorcheck	Check	Check	Check	
Frequency	48.8	37.9	10.6	Hz
Overswing Ratio	1.0	2.0	1.0	

Peak Vector Sum 4.14 mm/s on September 5, 2007 at 12:20:05



Time Scale: 5 minutes /div **Amplitude Scale:** Geo: 1.000 mm/s/div

Sensorcheck

Histogram Start Time 07:17:35 September 6, 2007
Histogram Finish Time 09:33:35 September 6, 2007
Number of Intervals 1632 at 5 seconds
Range Geo :254 mm/s
Sample Rate 2048sps
Job Number: 1

Serial Number BE10301 V 8.01-8.0 MiniMate Plus
Battery Level 6.1 Volts
Calibration June 24, 2005 by Instantel.Inc
File Name L301BU3G.9B0

Notes

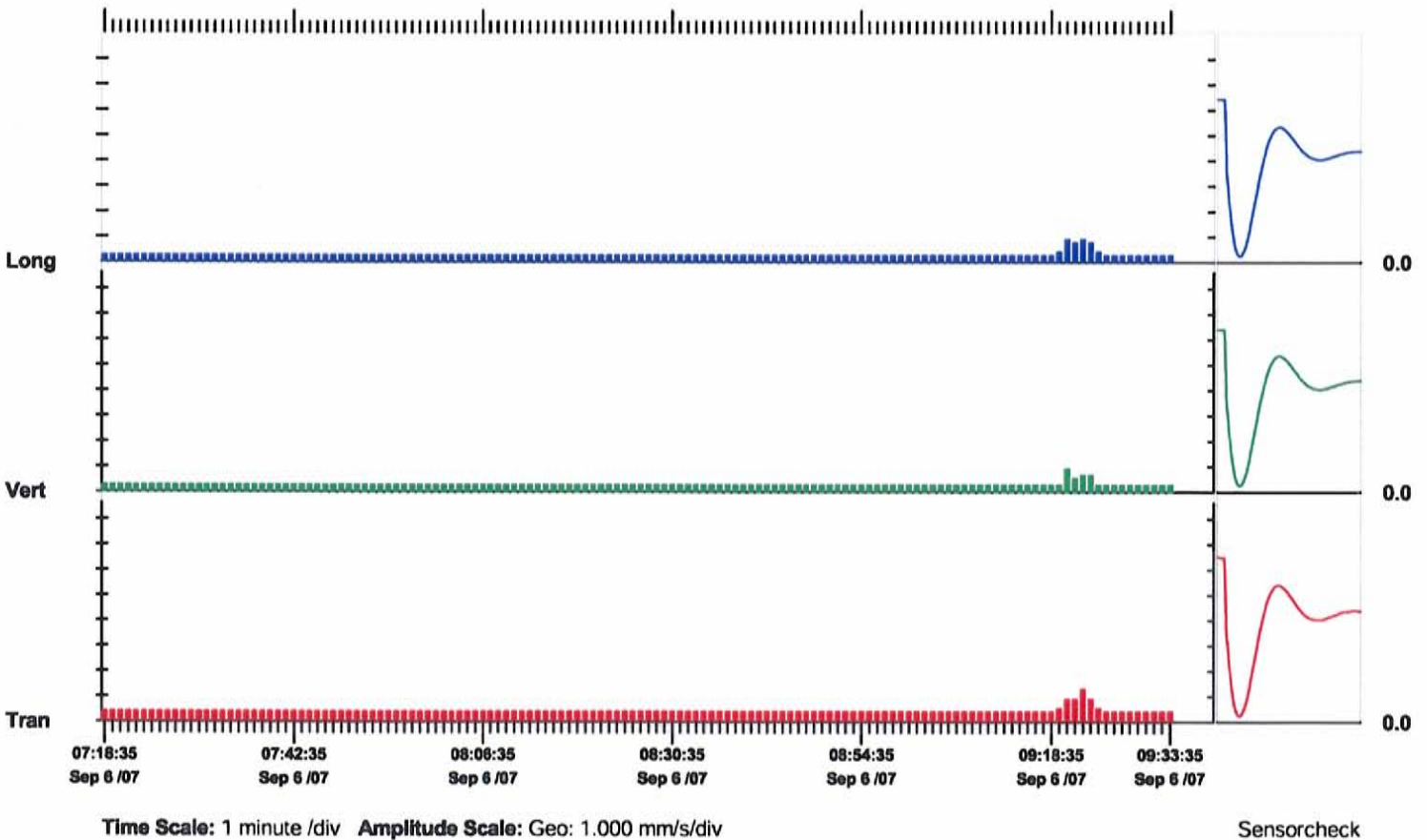
Endroit 386, rue des Érables (Charlemagne)
 Client: Agence métropolitaine des transports (AMT)
 Utilisateur: Dany Thériault
 Source:

Notes

Post Event Notes

	Tran	Vert	Long	
PPV	1.27	0.889	0.889	mm/s
ZC Freq	64	171	73	Hz
Date	Sep 6 /07	Sep 6 /07	Sep 6 /07	
Time	09:21:55	09:20:10	09:20:20	
Sensorcheck	Passed	Passed	Passed	
Frequency	7.6	7.4	7.4	Hz
Overswing Ratio	3.8	3.9	4.0	

Peak Vector Sum 1.44 mm/s on September 6, 2007 at 09:21:55



Histogram Start Time 11:09:16 September 6, 2007
Histogram Finish Time 22:09:49 September 6, 2007
Number of Intervals 7926 at 5 seconds
Range Geo :254 mm/s
Sample Rate 2048sps
Job Number: 1

Serial Number BE10301 V 8.01-8.0 MiniMate Plus
Battery Level 5.9 Volts
Calibration June 24, 2005 by Instantel, Inc
File Name L301BU3Q.ZG0

Notes

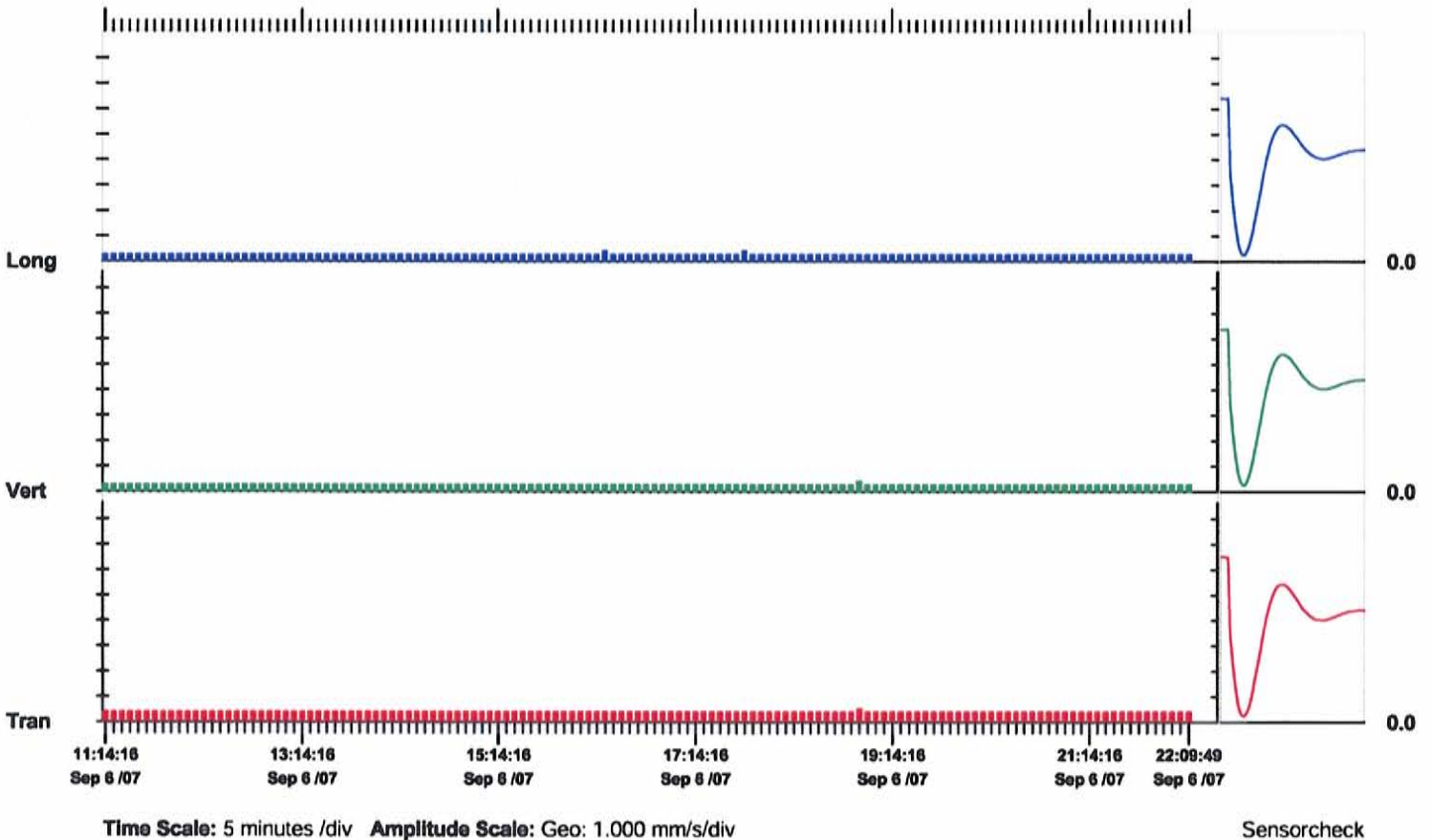
Endroit 386, rue des Érables (Charlemagne)
 Client: Agence métropolitaine des transports (AMT)
 Utilisateur: Dany Thériault
 Source:

Notes

Post Event Notes

	Tran	Vert	Long	
PPV	0.508	0.381	0.381	mm/s
ZC Freq	>200	>200	>200	Hz
Date	Sep 6 /07	Sep 6 /07	Sep 6 /07	
Time	18:52:11	18:52:41	16:17:31	
Sensorcheck	Passed	Passed	Passed	
Frequency	7.6	7.4	7.4	Hz
Overswing Ratio	3.7	3.8	3.9	

Peak Vector Sum 0.596 mm/s on September 6, 2007 at 18:52:41



Histogram Start Time 06:28:26 September 7, 2007
Histogram Finish Time 13:02:02 September 7, 2007
Number of Intervals 4723 at 5 seconds
Range Geo :254 mm/s
Sample Rate 2048sps
Job Number: 1

Serial Number BE10301 V 8.01-8.0 MiniMate Plus
Battery Level 5.8 Volts (Battery Low)
Calibration June 24, 2005 by Instantel.Inc
File Name L301BU58.NEO

Notes

Endroit 386, rue des Érables (Charlemagne)
Client: Agence métropolitaine des transports (AMT)
Utilisateur: Dany Thériault
Source:

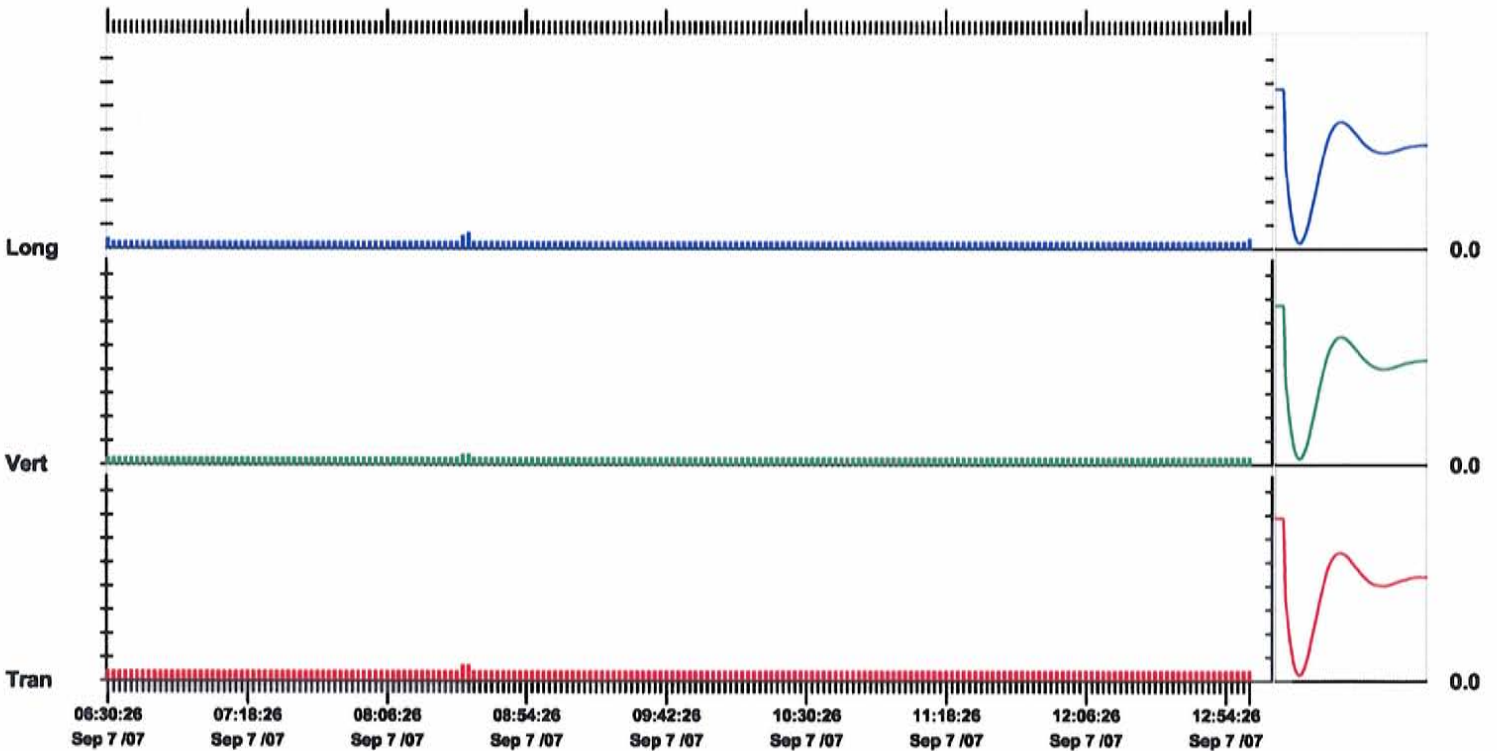
Notes

Post Event Notes

	Tran	Vert	Long	
PPV	0.635	0.381	0.635	mm/s
ZC Freq	N/A	85	43	Hz
Date	Sep 7 /07	Sep 7 /07	Sep 7 /07	
Time	08:32:26	08:32:26	08:32:31	
Sensorcheck	Passed	Passed	Passed	
Frequency	7.5	7.4	7.3	Hz
Overswing Ratio	3.8	3.8	4.0	

Peak Vector Sum 0.751 mm/s on September 7, 2007 at 08:32:31

N/A: Not Applicable



Time Scale: 2 minutes /div **Amplitude Scale:** Geo: 1.000 mm/s/div

Sensorcheck

POINT DE RELEVÉ NO. 6

Histogram Start Time 12:52:41 September 5, 2007
Histogram Finish Time 21:54:02 September 5, 2007
Number of Intervals 6496 at 5 seconds
Range Geo :254 mm/s
Sample Rate 2048sps
Job Number: 3001

Serial Number BE9554 V 8.01-8.0 MiniMate Plus
Battery Level 6.3 Volts
Calibration June 22, 2005 by Instantel Inc.
File Name K554BU21.3T0

Notes

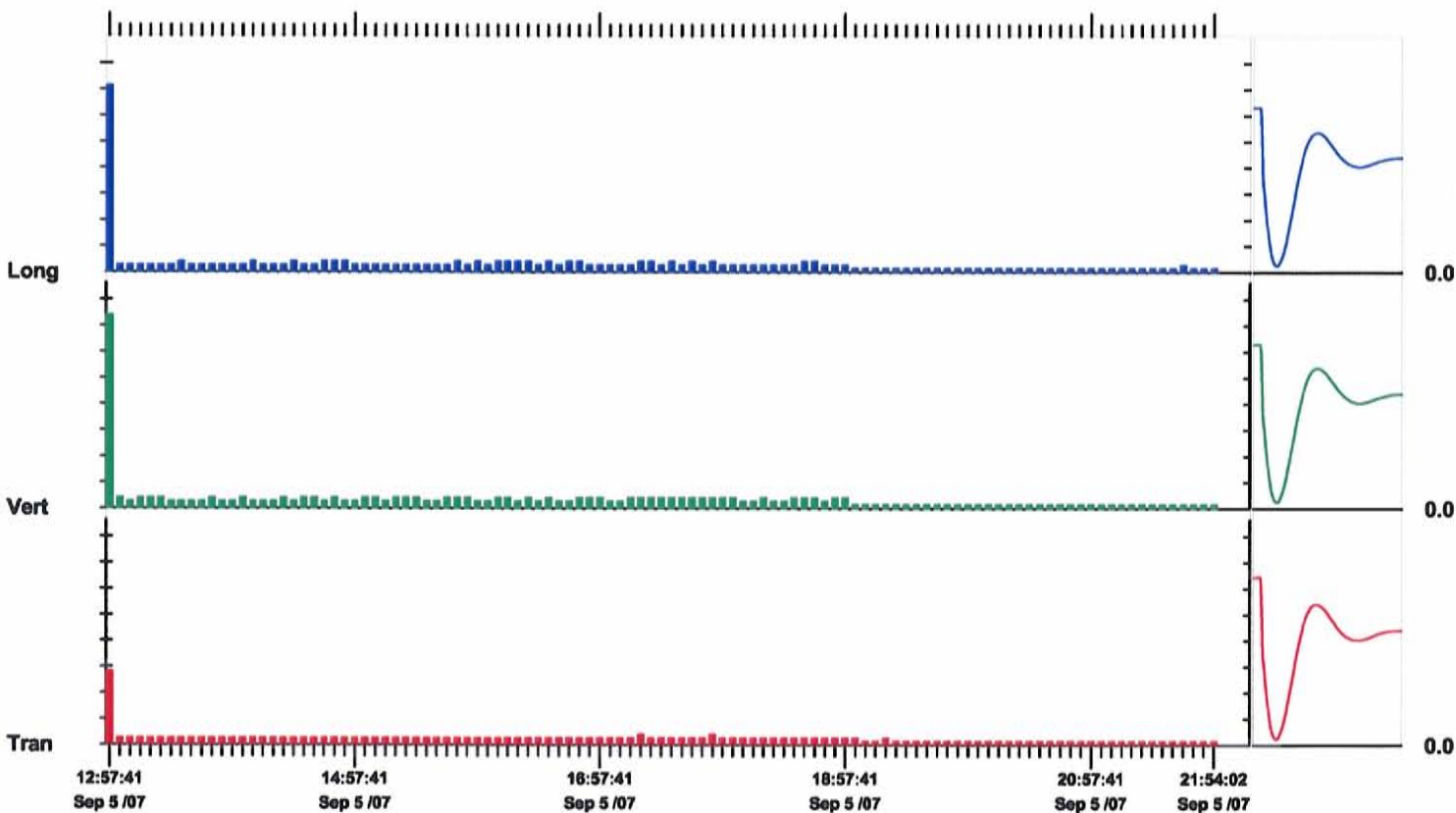
Endroit: 344, rue de la Presqu'île (Charlemagne)
 Client: Agence métropolitaine des transports (AMT)
 Utilisateur: Dany Thériault
 Source:

Notes

Post Event Notes

	Tran	Vert	Long	
PPV	2.79	7.37	7.11	mm/s
ZC Freq	85	102	28	Hz
Date	Sep 5 /07	Sep 5 /07	Sep 5 /07	
Time	12:53:41	12:53:41	12:53:41	
Sensorcheck	Passed	Passed	Passed	
Frequency	7.6	7.4	7.4	Hz
Overswing Ratio	3.8	3.9	4.0	

Peak Vector Sum 8.43 mm/s on September 5, 2007 at 12:53:41



Time Scale: 5 minutes /div **Amplitude Scale:** Geo: 1.000 mm/s/div

Sensorcheck

Histogram Start Time 06:57:15 September 6, 2007
Histogram Finish Time 09:40:13 September 6, 2007
Number of Intervals 1955 at 5 seconds
Range Geo :254 mm/s
Sample Rate 2048sps
Job Number: 3001

Serial Number BE9554 V 8.01-8.0 MiniMate Plus
Battery Level 6.3 Volts
Calibration June 22, 2005 by Instantel Inc.
File Name K554BU3F.BF0

Notes

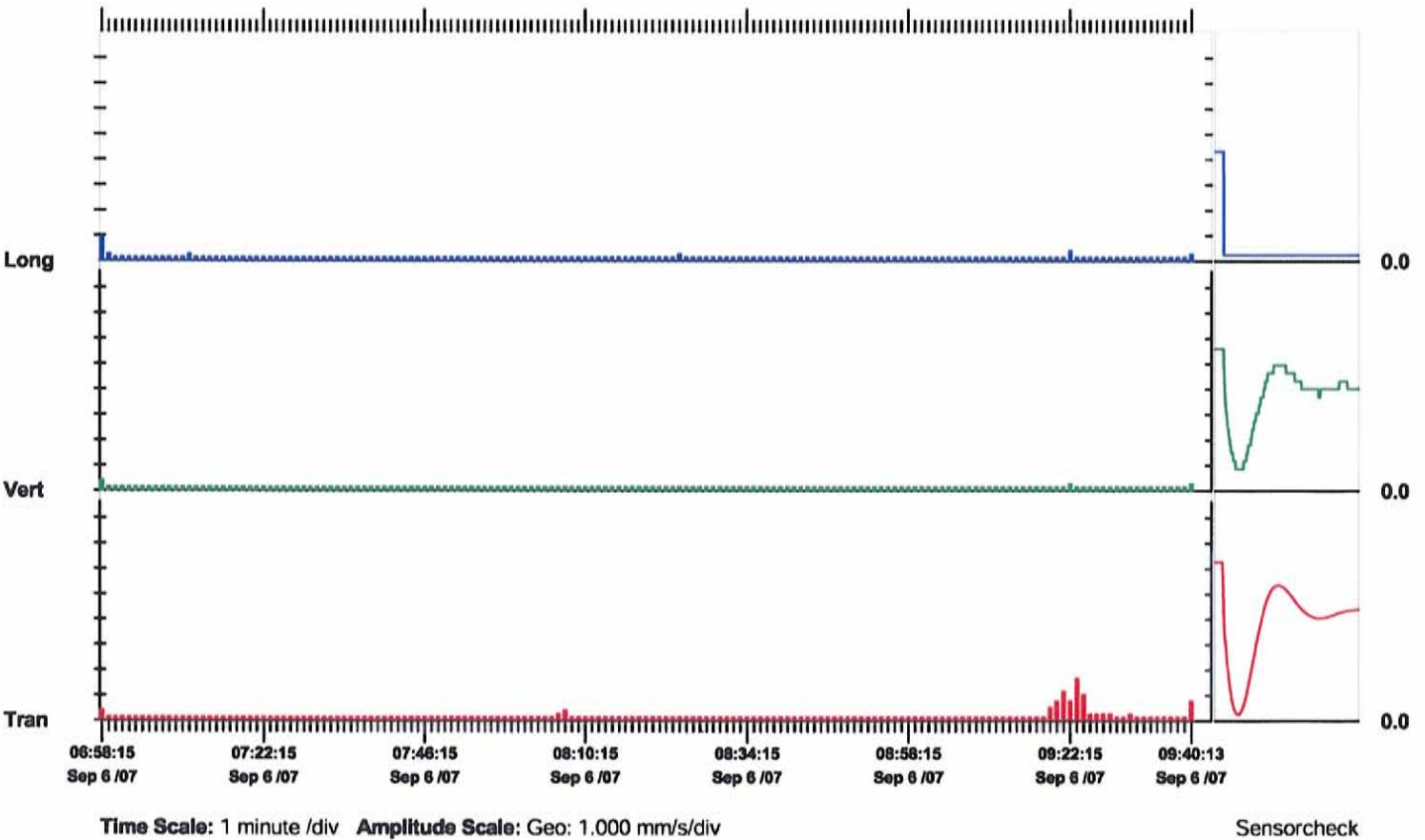
Endroit: 344, rue de la Presqu'île (Charlemagne)
 Client: Agence métropolitaine des transports (AMT)
 Utilisateur: Dany Thériault
 Source:

Notes

Post Event Notes

	Tran	Vert	Long	
PPV	1.65	0.381	0.889	mm/s
ZC Freq	43	79	60	Hz
Date	Sep 6 /07	Sep 6 /07	Sep 6 /07	
Time	09:23:15	06:57:30	06:57:40	
Sensorcheck	Passed	Check	Check	
Frequency	7.2	7.1	1024.0	Hz
Overswing Ratio	4.0	5.5	0.0	

Peak Vector Sum 1.66 mm/s on September 6, 2007 at 09:23:15



Histogram Start Time 11:01:45 September 6, 2007
Histogram Finish Time 22:20:06 September 6, 2007
Number of Intervals 8140 at 5 seconds
Range Geo :254 mm/s
Sample Rate 2048sps
Job Number: 3001

Serial Number BE9554 V 8.01-8.0 MiniMate Plus
Battery Level 6.1 Volts
Calibration June 22, 2005 by Istantel Inc.
File Name K554BU3Q.MX0

Notes

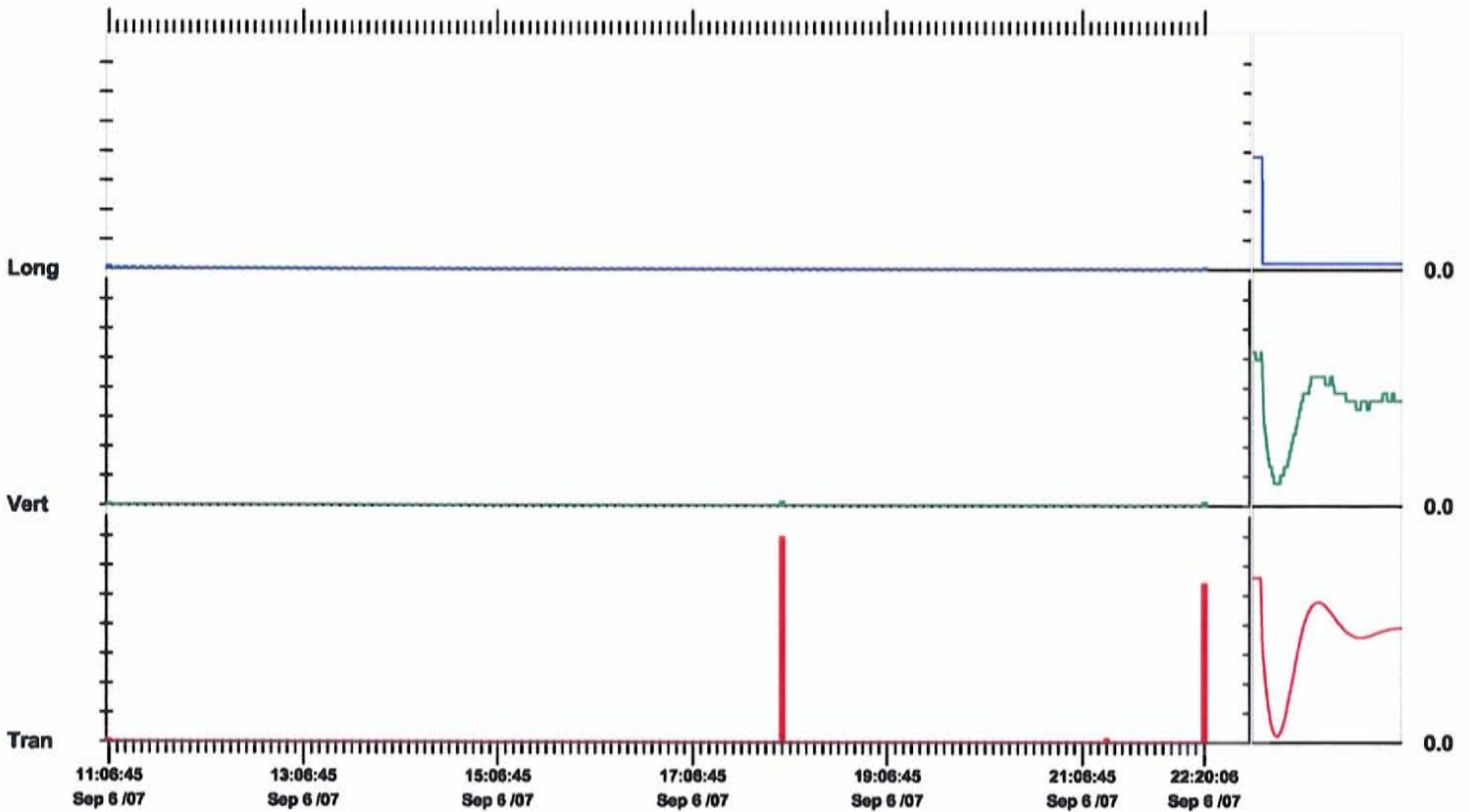
Endroit: 344, rue de la Presqu'île (Charlemagne)
 Client: Agence métropolitaine des transports (AMT)
 Utilisateur: Dany Thériault
 Source:

Notes

Post Event Notes

	Tran	Vert	Long	
PPV	139	2.29	1.52	mm/s
ZC Freq	<1.0	1.6	8.1	Hz
Date	Sep 6 /07	Sep 6 /07	Sep 6 /07	
Time	17:59:30	17:59:30	11:02:30	
Sensorcheck	Passed	Check	Check	
Frequency	7.3	7.4	1024.0	Hz
Overswing Ratio	3.8	5.5	0.0	

Peak Vector Sum 139 mm/s on September 6, 2007 at 17:59:30



Time Scale: 5 minutes /div **Amplitude Scale:** Geo: 20.0 mm/s/div

Sensorcheck

Histogram Start Time 06:19:55 September 7, 2007
Histogram Finish Time 08:47:04 September 7, 2007
Number of Intervals 1765 at 5 seconds
Range Geo :254 mm/s
Sample Rate 2048sps
Job Number: 3001

Serial Number BE9554 V 8.01-8.0 MiniMate Plus
Battery Level 6.0 Volts
Calibration June 22, 2005 by Istantel Inc.
File Name K554BU58.970

Notes

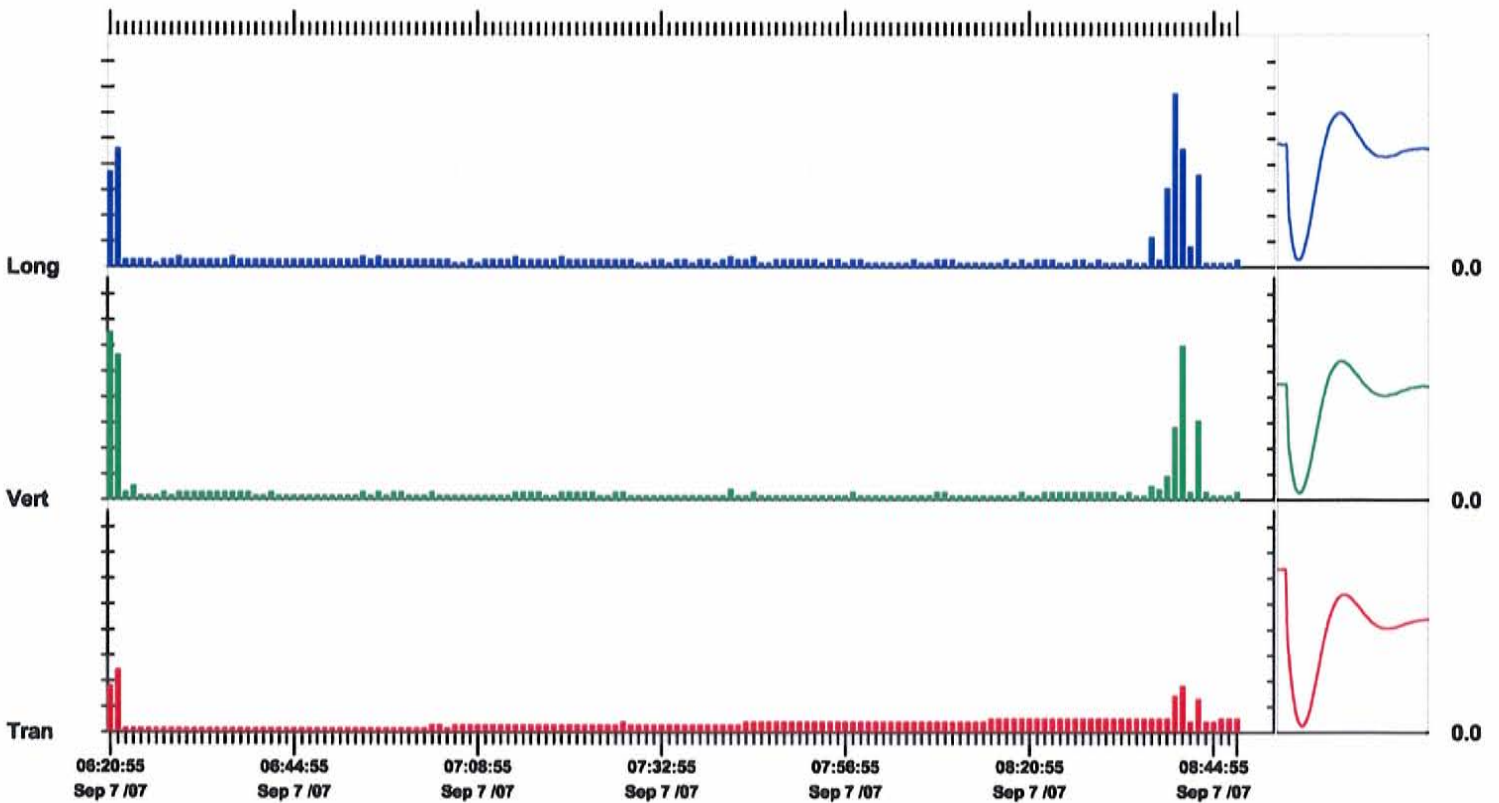
Endroit: 344, rue de la Presqu'île (Charlemagne)
 Client: Agence métropolitaine des transports (AMT)
 Utilisateur: Dany Thériault
 Source:

Notes

Post Event Notes

	Tran	Vert	Long	
PPV	2.41	6.48	6.73	mm/s
ZC Freq	<1.0	1.1	4.6	Hz
Date	Sep 7 /07	Sep 7 /07	Sep 7 /07	
Time	06:21:25	06:20:55	08:39:55	
Sensorcheck	Passed	Check	Check	
Frequency	7.2	7.7	8.8	Hz
Overswing Ratio	3.9	3.7	2.4	

Peak Vector Sum 6.73 mm/s on September 7, 2007 at 08:39:55



Time Scale: 1 minute /div **Amplitude Scale:** Geo: 1.000 mm/s/div

Sensorcheck

Histogram Start Time 08:48:14 September 7, 2007
Histogram Finish Time 09:23:37 September 7, 2007
Number of Intervals 424 at 5 seconds
Range Geo :254 mm/s
Sample Rate 2048sps
Job Number: 3001

Serial Number BE9554 V 8.01-8.0 MiniMate Plus
Battery Level 6.0 Volts
Calibration June 22, 2005 by Instantel Inc.
File Name K554BU5F.4E0

Notes

Endroit: 344, rue de la Presqu'île (Charlemagne)
Client: Agence métropolitaine des transports (AMT)
Utilisateur: Dany Thériault
Source:

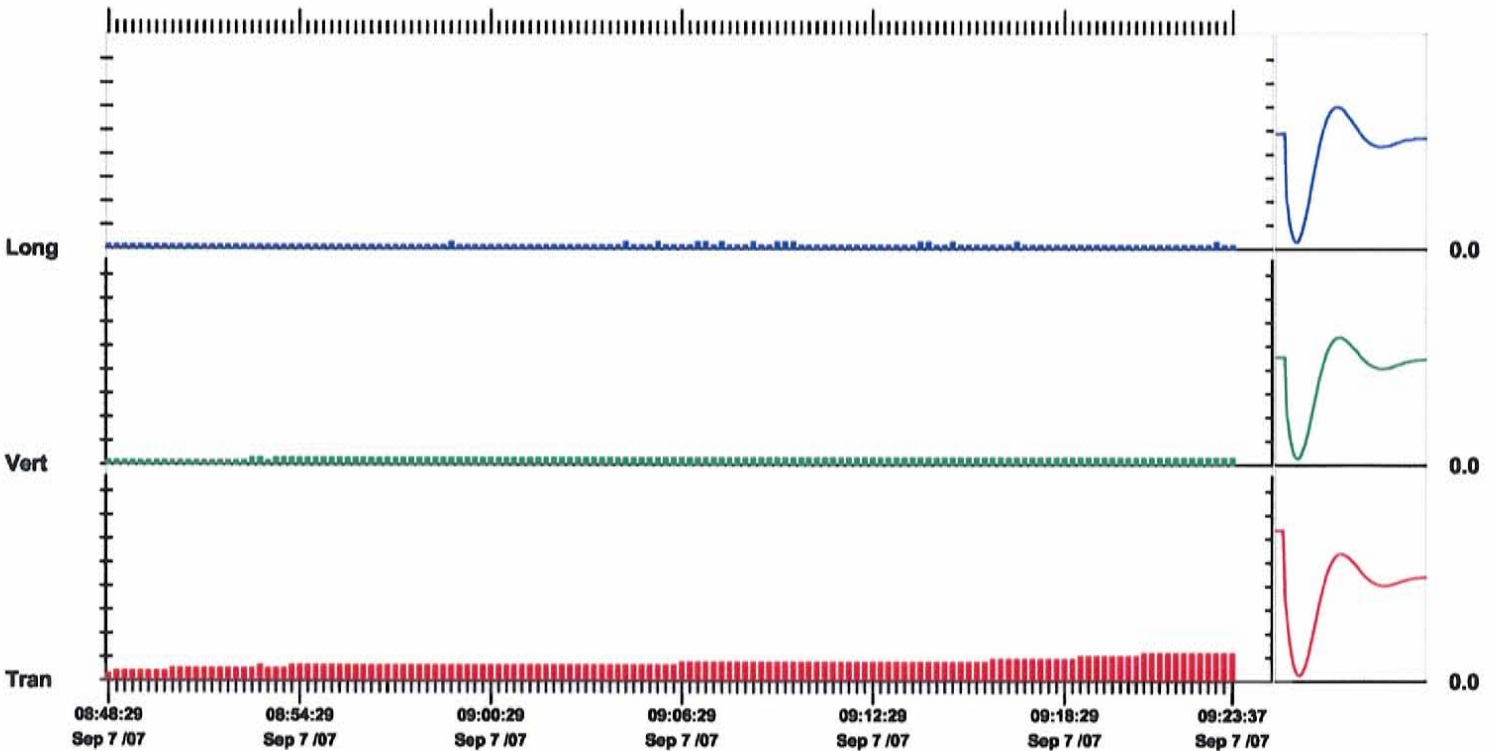
Notes

Post Event Notes

	Tran	Vert	Long	
PPV	1.14	0.254	0.254	mm/s
ZC Freq	N/A	>200	>200	Hz
Date	Sep 7 /07	Sep 7 /07	Sep 7 /07	
Time	09:20:54	08:52:49	08:59:09	
Sensorcheck	Passed	Check	Check	
Frequency	7.3	7.7	8.8	Hz
Overswing Ratio	3.9	3.9	2.4	

Peak Vector Sum 1.18 mm/s on September 7, 2007 at 09:23:04

N/A: Not Applicable



Time Scale: 15 seconds /div **Amplitude Scale:** Geo: 1.000 mm/s/div

Sensorcheck

Histogram Start Time 09:25:14 September 7, 2007
Histogram Finish Time 09:50:32 September 7, 2007
Number of Intervals 303 at 5 seconds
Range Geo :254 mm/s
Sample Rate 2048sps
Job Number: 3001

Serial Number BE9554 V 8.01-8.0 MiniMate Plus
Battery Level 6.0 Volts
Calibration June 22, 2005 by Instantel Inc.
File Name K554BU5G.U20

Notes

Endroit: 344, rue de la Presqu'île (Charlemagne)
Client: Agence métropolitaine des transports (AMT)
Utilisateur: Dany Thériault
Source:

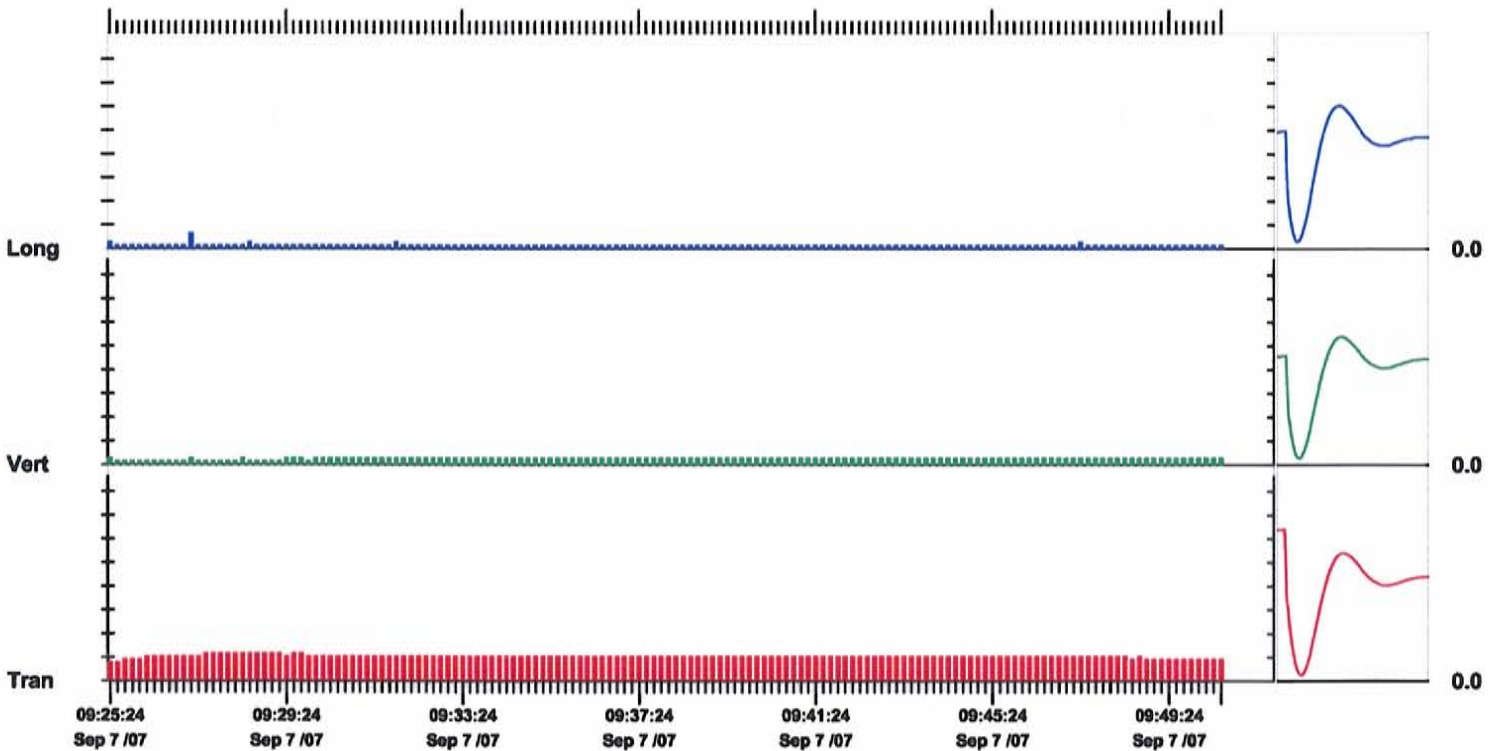
Notes

Post Event Notes

	Tran	Vert	Long	
PPV	1.14	0.254	0.635	mm/s
ZC Freq	N/A	>200	8.4	Hz
Date	Sep 7 /07	Sep 7 /07	Sep 7 /07	
Time	09:27:34	09:25:24	09:27:09	
Sensorcheck	Passed	Check	Check	
Frequency	7.3	7.6	8.8	Hz
Overswing Ratio	3.9	3.8	2.3	

Peak Vector Sum 1.20 mm/s on September 7, 2007 at 09:27:09

N/A: Not Applicable



Time Scale: 10 seconds /div **Amplitude Scale:** Geo: 1.000 mm/s/div

Sensorcheck

Histogram Start Time 09:54:03 September 7, 2007
Histogram Finish Time 11:04:34 September 7, 2007
Number of Intervals 846 at 5 seconds
Range Geo :254 mm/s
Sample Rate 2048sps
Job Number: 3001

Serial Number BE9554 V 8.01-8.0 MiniMate Plus
Battery Level 6.0 Volts
Calibration June 22, 2005 by Instantel Inc.
File Name K554BU5I.630

Notes

Endroit: 344, rue de la Presqu'île (Charlemagne)
 Client: Agence métropolitaine des transports (AMT)
 Utilisateur: Dany Thériault
 Source:

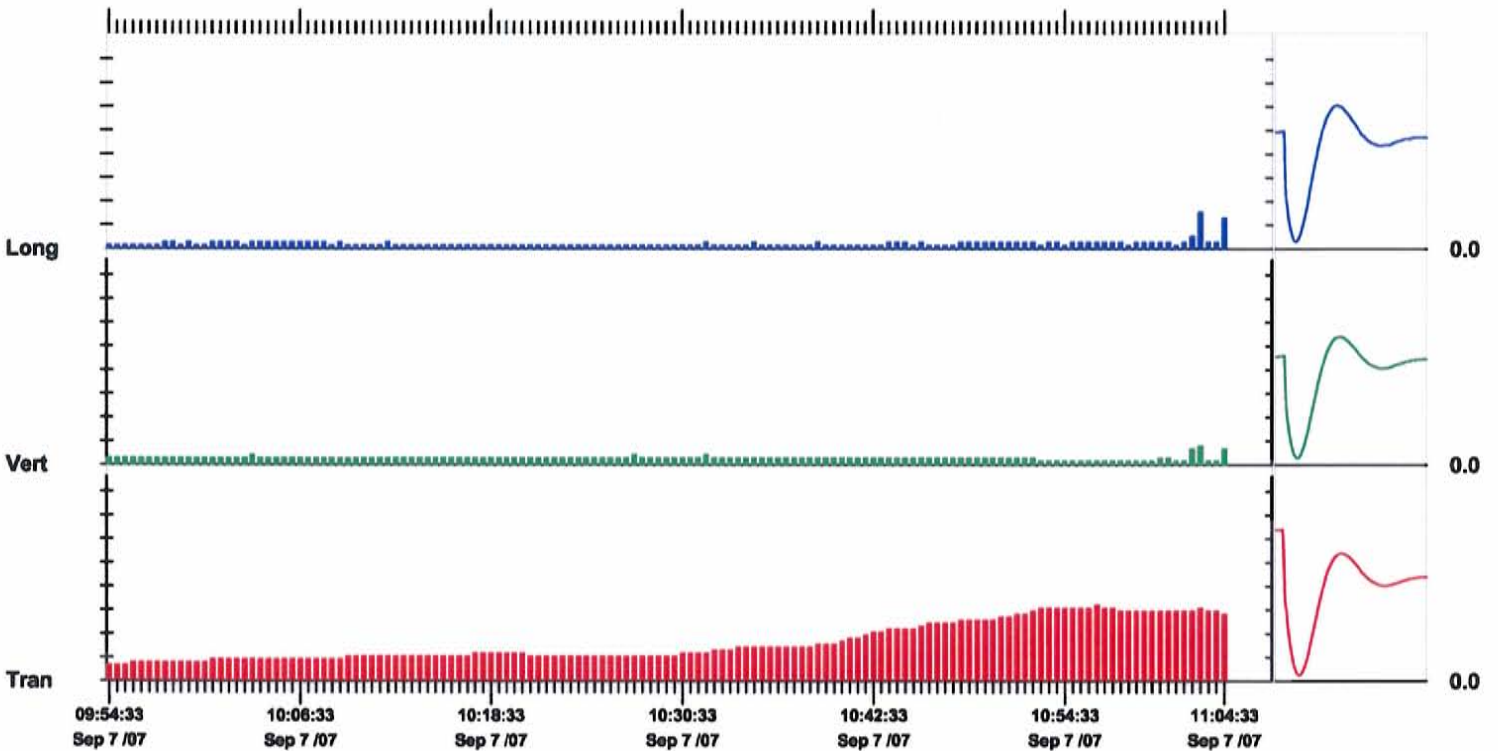
Notes

Post Event Notes

	Tran	Vert	Long	
PPV	3.17	0.762	1.52	mm/s
ZC Freq	N/A	2.4	1.4	Hz
Date	Sep 7 /07	Sep 7 /07	Sep 7 /07	
Time	10:56:13	11:02:43	11:02:38	
Sensorcheck	Passed	Check	Check	
Frequency	7.3	7.6	8.8	Hz
Overswing Ratio	3.8	3.8	2.3	

Peak Vector Sum 3.19 mm/s on September 7, 2007 at 11:02:38

N/A: Not Applicable



Time Scale: 30 seconds /div **Amplitude Scale:** Geo: 1.000 mm/s/div

Sensorcheck

POINT DE RELEVÉ NO. 7

Histogram Start Time 14:01:41 September 5, 2007
Histogram Finish Time 14:55:02 September 5, 2007
Number of Intervals 640 at 5 seconds
Range Geo : 254 mm/s
Sample Rate 2048sps
Job Number: 2001

Serial Number BE7862 V 8.01-8.0 MiniMate Plus
Battery Level 6.3 Volts
Calibration June 22, 2005 by Instantel Inc.
File Name I862BU24.ATO

Notes

Endroit: 42, rue Archambault (Charlemagne)
 Client: Agence métropolitaine des transports (AMT)
 Utilisateur: David Noël
 Source:

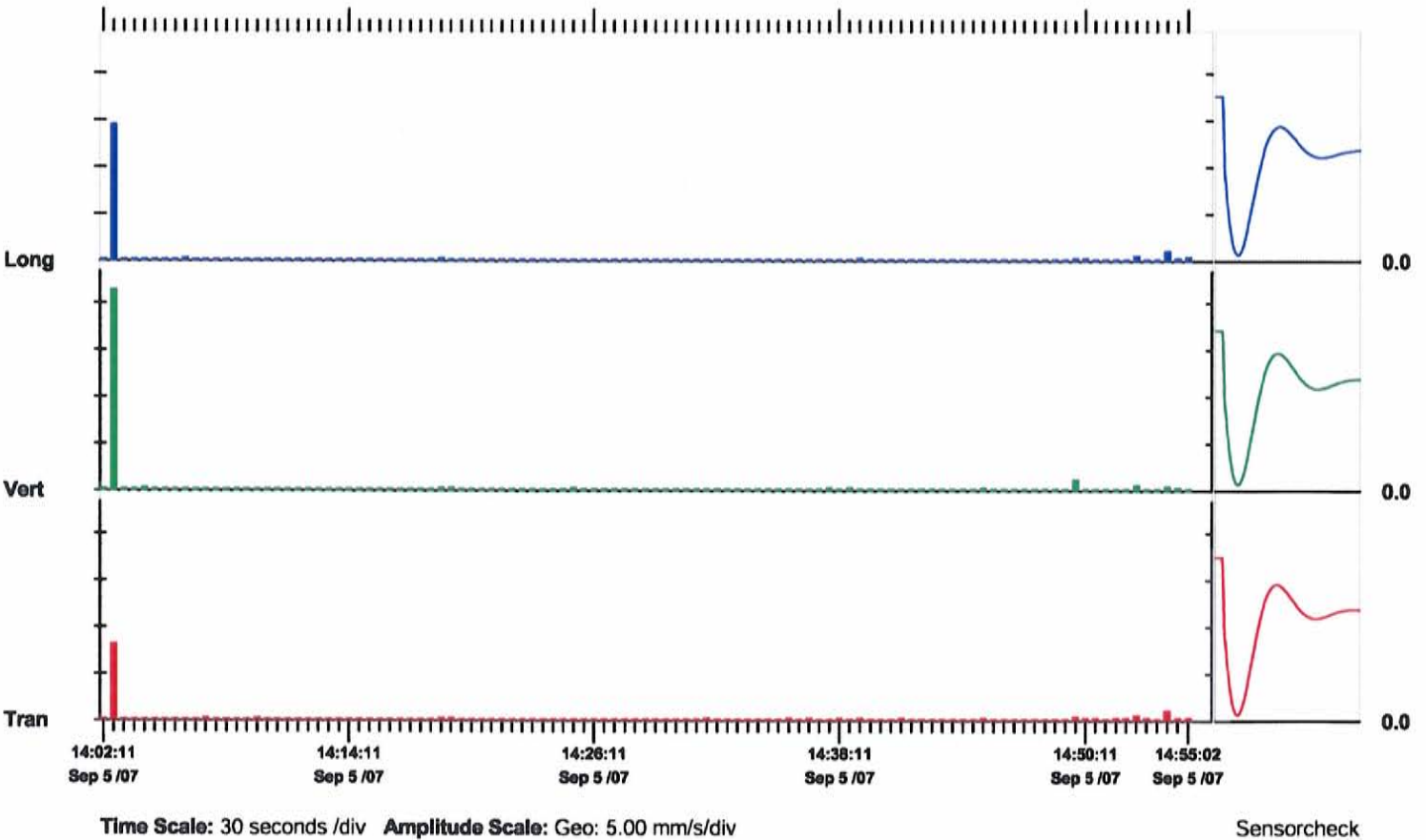
Notes

Station 7

Post Event Notes

	Tran	Vert	Long	
PPV	8.13	21.3	14.5	mm/s
ZC Freq	31	51	24	Hz
Date	Sep 5 /07	Sep 5 /07	Sep 5 /07	
Time	14:02:16	14:02:16	14:02:16	
Sensorcheck	Passed	Passed	Passed	
Frequency	7.6	7.5	7.3	Hz
Overswing Ratio	3.8	3.7	4.1	

Peak Vector Sum 22.9 mm/s on September 5, 2007 at 14:02:16



Histogram Start Time 15:05:55 September 5, 2007
Histogram Finish Time 21:50:04 September 5, 2007
Number of Intervals 4849 at 5 seconds
Range Geo :254 mm/s
Sample Rate 2048sps
Job Number: 2001

Serial Number BE7862 V 8.01-8.0 MiniMate Plus
Battery Level 6.3 Volts
Calibration June 22, 2005 by Instantel Inc.
File Name I862BU27.9V0

Notes

Endroit: 42, rue Archambault (Charlemagne)
 Client: Agence métropolitaine des transports (AMT)
 Utilisateur: David Noël
 Source:

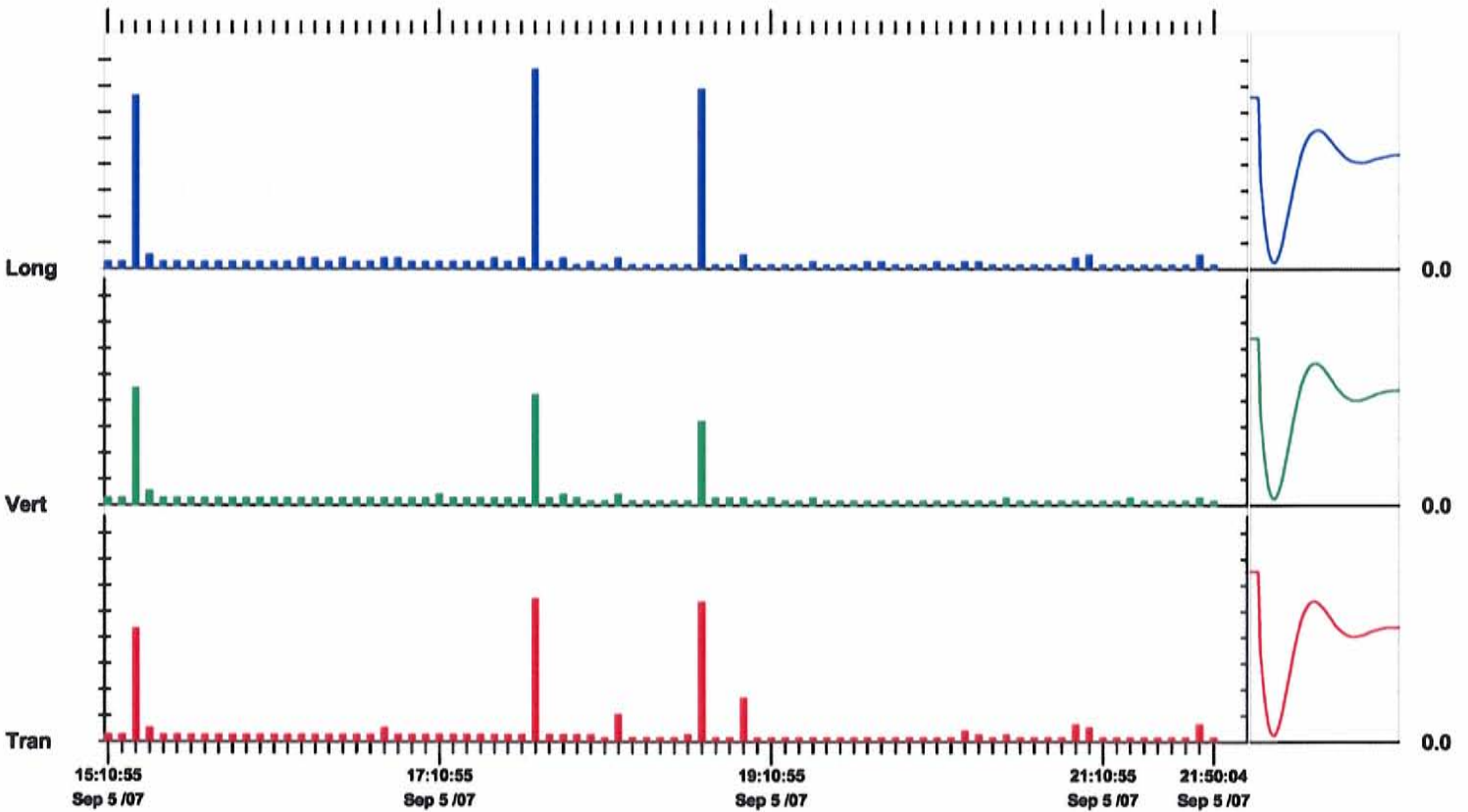
Notes

Station 7

Post Event Notes

	Tran	Vert	Long	
PPV	5.46	4.44	7.62	mm/s
ZC Freq	37	9.8	35	Hz
Date	Sep 5 /07	Sep 5 /07	Sep 5 /07	
Time	17:43:35	15:20:10	17:43:15	
Sensorcheck	Passed	Passed	Passed	
Frequency	7.5	7.4	7.2	Hz
Overswing Ratio	3.8	3.7	4.1	

Peak Vector Sum 7.72 mm/s on September 5, 2007 at 17:43:15



Time Scale: 5 minutes /div **Amplitude Scale:** Geo: 1.000 mm/s/div

Sensorcheck

Histogram Start Time 06:42:16 September 6, 2007
Histogram Finish Time 06:45:50 September 6, 2007
Number of Intervals 42 at 5 seconds
Range Geo :254 mm/s
Sample Rate 2048sps
Job Number: 1001

Serial Number BE10297 V 8.12-8.0 MiniMate Plus
Battery Level 6.2 Volts
Calibration April 13, 2007 by Instantel Inc.
File Name L297BU3E.MG0

Notes

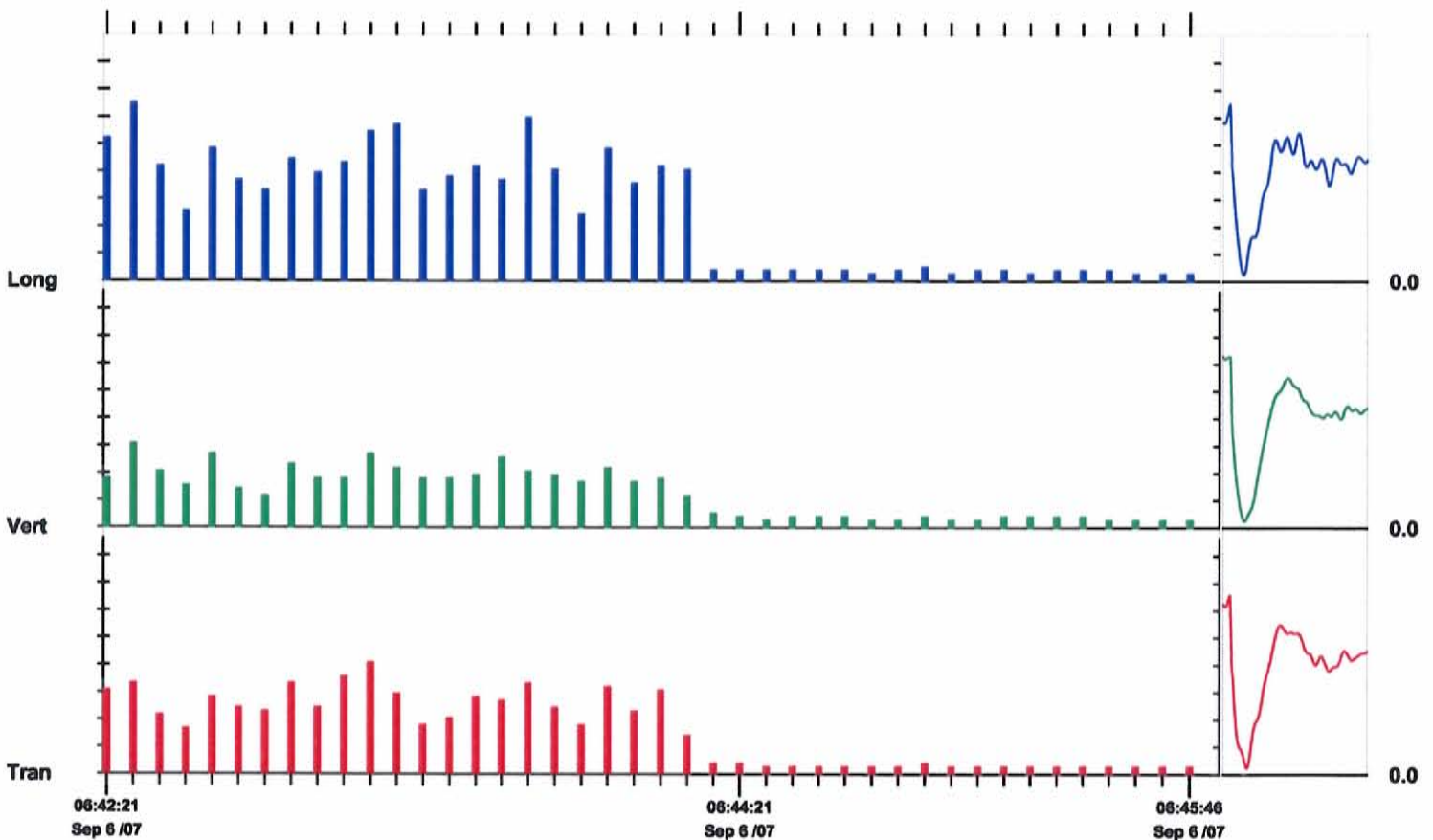
Endroit: 42, rue Archambault (Charlemagne)
 Client: Agence métropolitaine des transports (AMT)
 Utilisateur: David Noël
 Source:

Remarques

Post Event Notes

	Tran	Vert	Long	
PPV	4.06	3.05	6.48	mm/s
ZC Freq	45	54	51	Hz
Date	Sep 6 /07	Sep 6 /07	Sep 6 /07	
Time	06:43:11	06:42:26	06:42:26	
Sensorcheck	Passed	Passed	Passed	
Frequency	7.2	7.3	7.4	Hz
Overswing Ratio	3.5	3.4	3.7	

Peak Vector Sum 6.54 mm/s on September 6, 2007 at 06:42:26



Time Scale: 5 seconds /div **Amplitude Scale:** Geo: 1.000 mm/s/div

Sensorcheck

Histogram Start Time 06:48:06 September 6, 2007
Histogram Finish Time 09:22:26 September 6, 2007
Number of Intervals 1852 at 5 seconds
Range Geo :254 mm/s
Sample Rate 2048sps
Job Number: 1001

Serial Number BE10297 V 8.12-8.0 MiniMate Plus
Battery Level 6.1 Volts
Calibration April 13, 2007 by Instantel Inc.
File Name L297BU3E.W60

Notes

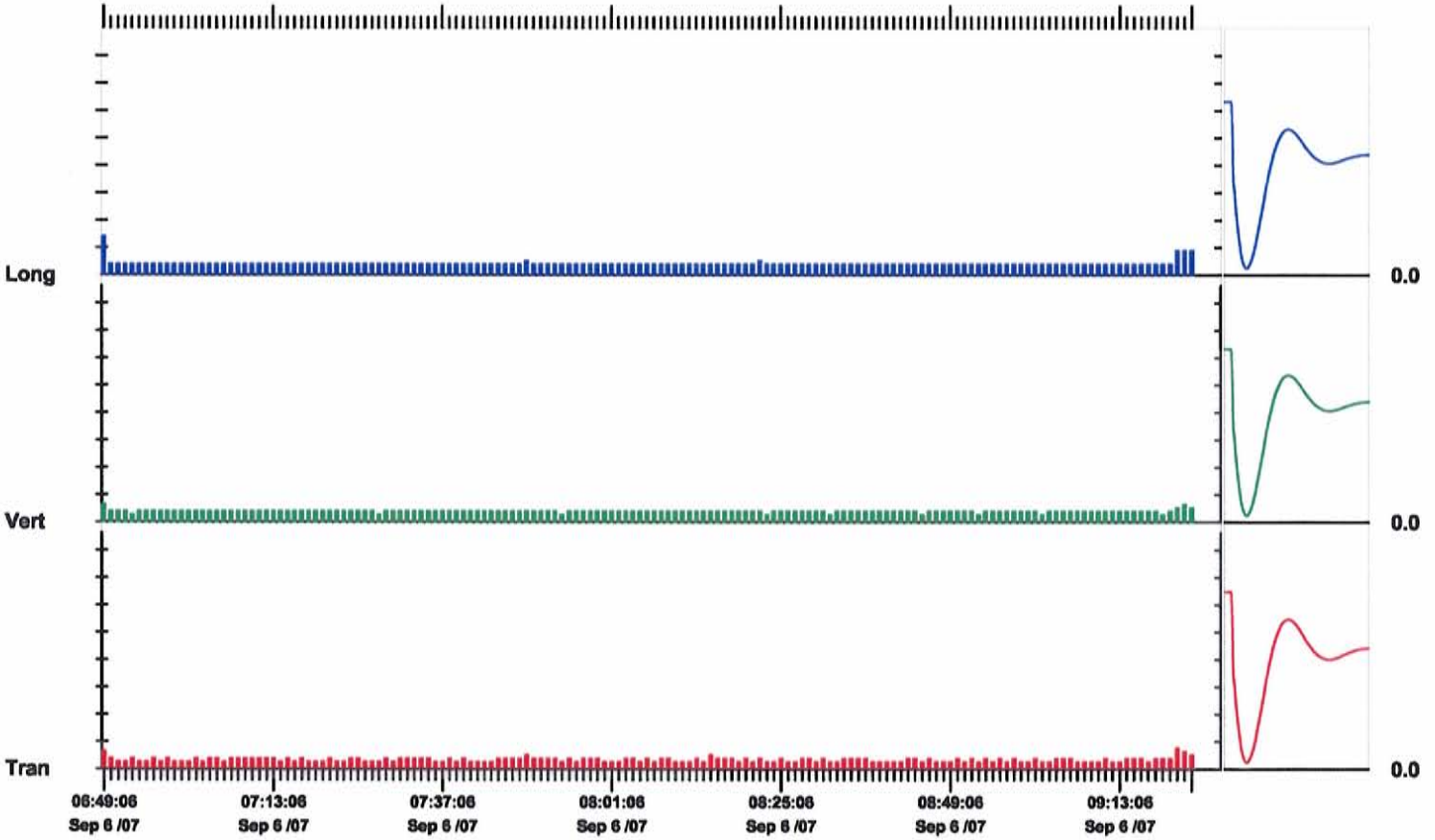
Endroit: 42, rue Archambault (Charlemagne)
 Client: Agence métropolitaine des transports (AMT)
 Utilisateur: David Noël
 Source:

Remarques

Post Event Notes

	Tran	Vert	Long	
PPV	0.762	0.635	1.40	mm/s
ZC Freq	68	114	68	Hz
Date	Sep 6 /07	Sep 6 /07	Sep 6 /07	
Time	09:20:41	06:48:51	06:48:51	
Sensorcheck	Passed	Passed	Passed	
Frequency	7.3	7.3	7.2	Hz
Overswing Ratio	3.5	3.9	4.1	

Peak Vector Sum 1.46 mm/s on September 6, 2007 at 06:48:51



Time Scale: 1 minute /div **Amplitude Scale:** Geo: 1.000 mm/s/div

Sensorcheck

Histogram Start Time 10:58:04 September 6, 2007
Histogram Finish Time 17:10:05 September 6, 2007
Number of Intervals 4464 at 5 seconds
Range Geo :254 mm/s
Sample Rate 2048sps
Job Number: 1001

Serial Number BE10297 V 8.12-8.0 MiniMate Plus
Battery Level 6.1 Volts
Calibration April 13, 2007 by Instantel Inc.
File Name L297BU3Q.GS0

Notes

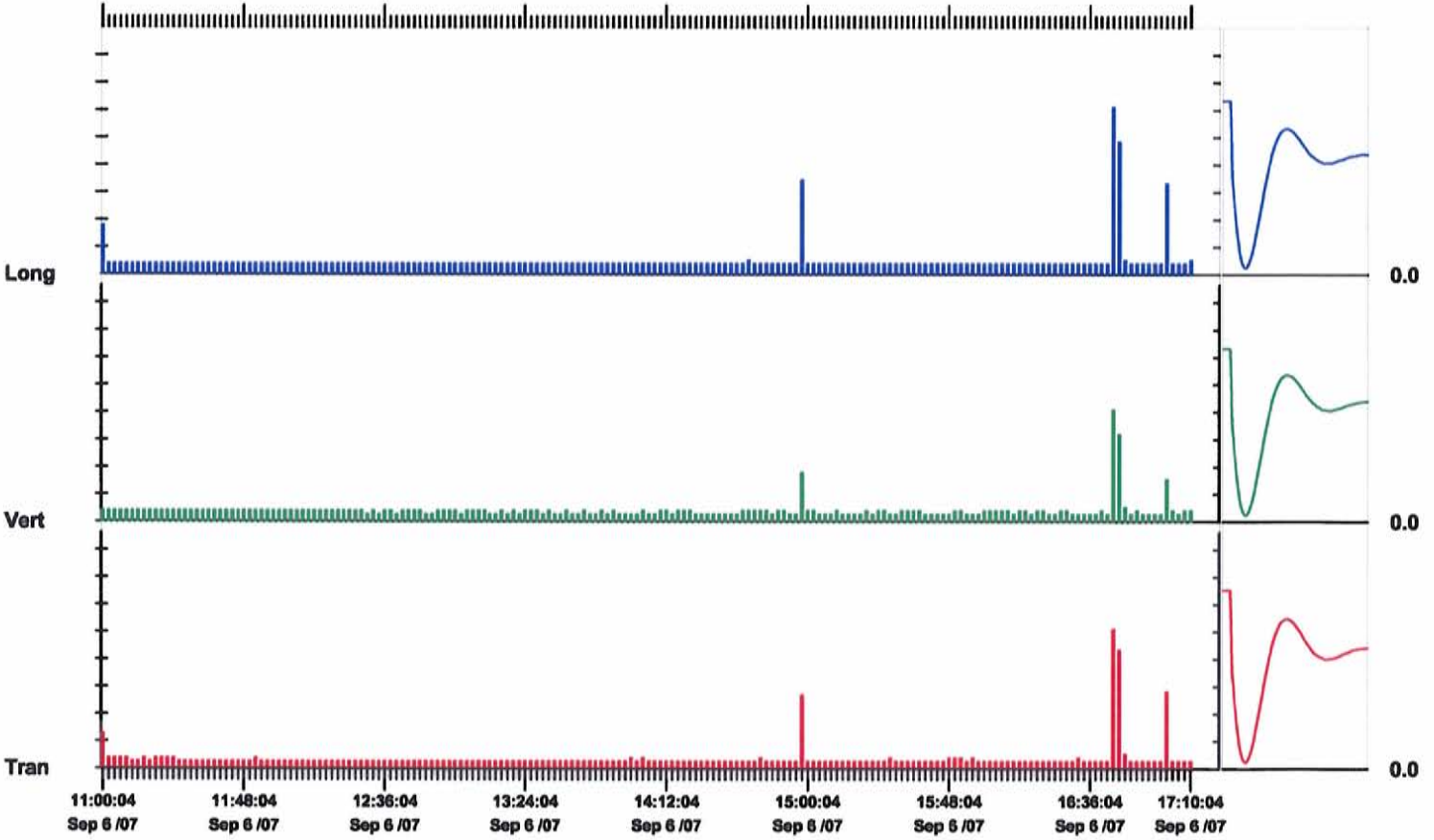
Endroit: 42, rue Archambault (Charlemagne)
 Client: Agence métropolitaine des transports (AMT)
 Utilisateur: David Noël
 Source:

Remarques

Post Event Notes

	Tran	Vert	Long	
PPV	5.08	4.06	6.10	mm/s
ZC Freq	54	49	51	Hz
Date	Sep 6 /07	Sep 6 /07	Sep 6 /07	
Time	16:43:39	16:43:59	16:43:54	
Sensorcheck	Passed	Passed	Passed	
Frequency	7.4	7.2	7.3	Hz
Overswing Ratio	3.5	3.9	4.1	

Peak Vector Sum 7.31 mm/s on September 6, 2007 at 16:43:54



Time Scale: 2 minutes /div **Amplitude Scale:** Geo: 1.000 mm/s/div

Sensorcheck

Histogram Start Time 17:11:59 September 6, 2007
Histogram Finish Time 21:59:01 September 6, 2007
Number of Intervals 3444 at 5 seconds
Range Geo :254 mm/s
Sample Rate 2048sps
Job Number: 1001

Serial Number BE10297 V 8.12-8.0 MiniMate Plus
Battery Level 5.9 Volts (Battery Low)
Calibration April 13, 2007 by Instantel Inc.
File Name L297BU47.RZO

Notes

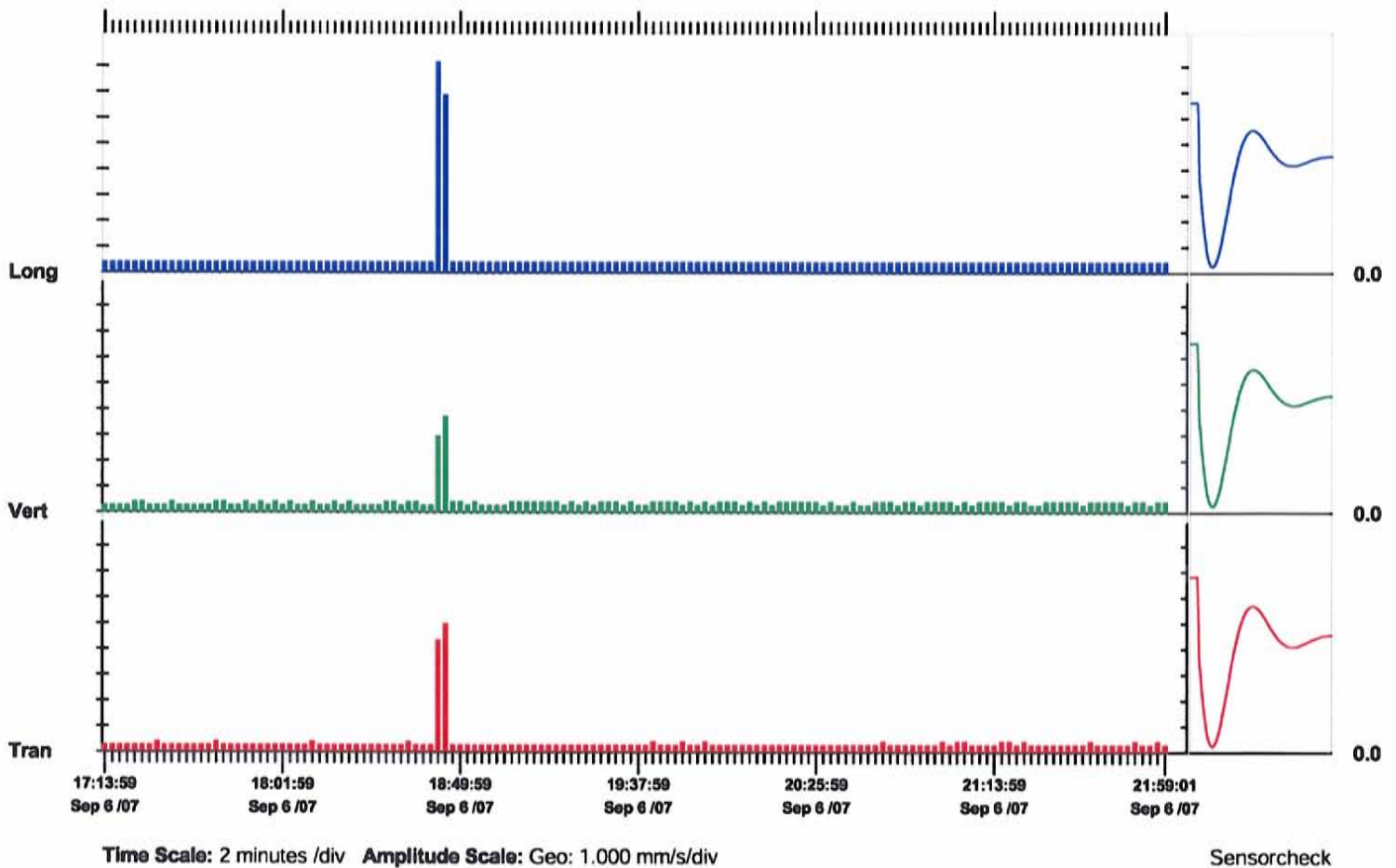
Endroit: 42, rue Archambault (Charlemagne)
Client: Agence métropolitaine des transports (AMT)
Utilisateur: David Noël
Source:

Remarques

Post Event Notes

	Tran	Vert	Long	
PPV	4.95	3.68	8.13	mm/s
ZC Freq	49	39	51	Hz
Date	Sep 6 /07	Sep 6 /07	Sep 6 /07	
Time	18:44:49	18:44:49	18:43:39	
Sensorcheck	Passed	Passed	Passed	
Frequency	7.5	7.2	7.3	Hz
Overswing Ratio	3.4	3.8	3.9	

Peak Vector Sum 8.13 mm/s on September 6, 2007 at 18:43:39



Histogram Start Time 06:06:52 September 7, 2007
Histogram Finish Time 08:21:28 September 7, 2007
Number of Intervals 1615 at 5 seconds
Range Geo :254 mm/s
Sample Rate 2048sps
Job Number: 1001

Serial Number BE10297 V 8.12-8.0 MiniMate Plus
Battery Level 6.3 Volts
Calibration April 13, 2007 by Instantel Inc.
File Name L297BU57.NGO

Notes

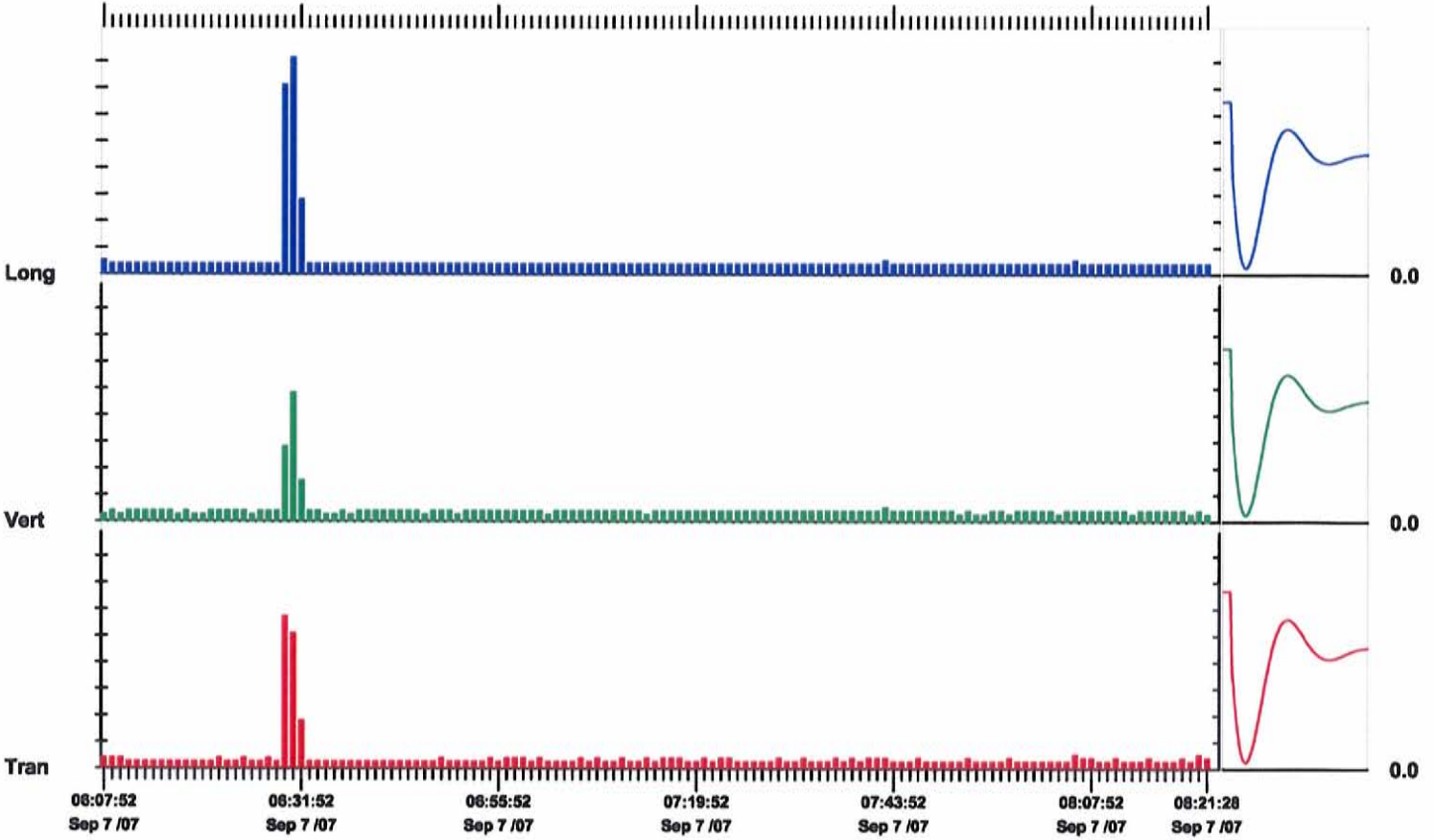
Endroit: 42, rue Archambault (Charlemagne)
 Client: Agence métropolitaine des transports (AMT)
 Utilisateur: David Noël
 Source:

Remarques

Post Event Notes

	Tran	Vert	Long	
PPV	5.71	4.83	8.13	mm/s
ZC Freq	43	47	38	Hz
Date	Sep 7 /07	Sep 7 /07	Sep 7 /07	
Time	06:29:37	06:30:07	06:30:37	
Sensorcheck	Passed	Passed	Passed	
Frequency	7.2	7.2	7.2	Hz
Overswing Ratio	3.6	3.9	4.1	

Peak Vector Sum 8.19 mm/s on September 7, 2007 at 06:30:37



Time Scale: 1 minute /div Amplitude Scale: Geo: 1.000 mm/s/div

Sensorcheck

Histogram Start Time 08:22:43 September 7, 2007
Histogram Finish Time 10:23:53 September 7, 2007
Number of Intervals 1453 at 5 seconds
Range Geo :254 mm/s
Sample Rate 2048sps
Job Number: 1001

Serial Number BE10297 V 8.12-8.0 MiniMate Plus
Battery Level 6.3 Volts
Calibration April 13, 2007 by Instantel Inc.
File Name L297BU5D.XVO

Notes

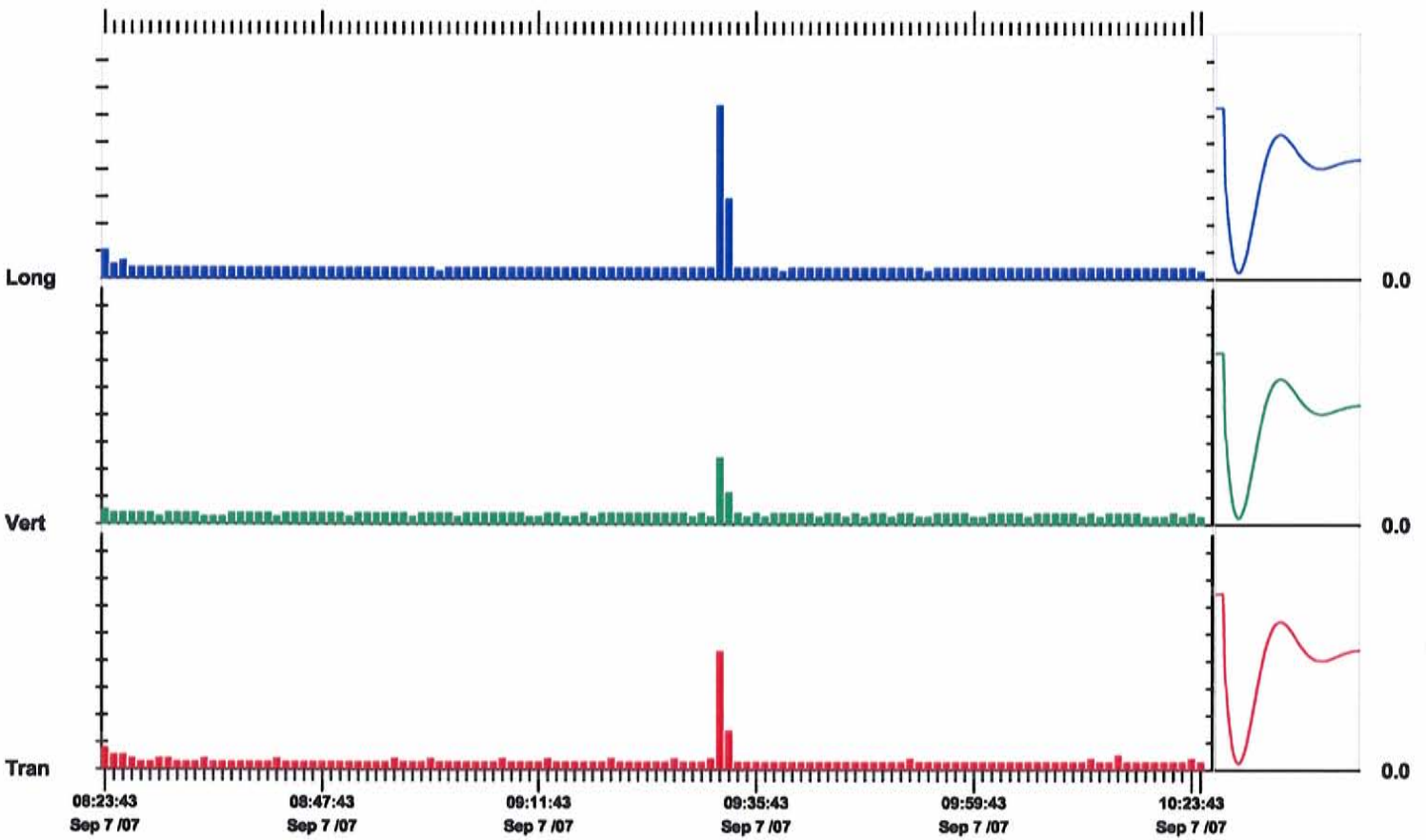
Endroit: 42, rue Archambault (Charlemagne)
 Client: Agence métropolitaine des transports (AMT)
 Utilisateur: David Noël
 Source:

Remarques

Post Event Notes

	Tran	Vert	Long	
PPV	4.32	2.41	6.35	mm/s
ZC Freq	41	34	39	Hz
Date	Sep 7 /07	Sep 7 /07	Sep 7 /07	
Time	09:31:43	09:31:43	09:31:43	
Sensorcheck	Passed	Passed	Passed	
Frequency	7.2	7.2	7.2	Hz
Overswing Ratio	3.6	3.9	4.1	

Peak Vector Sum 7.83 mm/s on September 7, 2007 at 09:31:43



Time Scale: 1 minute /div **Amplitude Scale:** Geo: 1.000 mm/s/div

Sensorcheck

Histogram Start Time 10:24:45 September 7, 2007
Histogram Finish Time 11:33:02 September 7, 2007
Number of Intervals 819 at 5 seconds
Range Geo :254 mm/s
Sample Rate 2048sps
Job Number: 1001

Serial Number BE10297 V 8.12-8.0 MiniMate Plus
Battery Level 6.3 Volts
Calibration April 13, 2007 by Instantel Inc.
File Name L297BU5J.L90

Notes

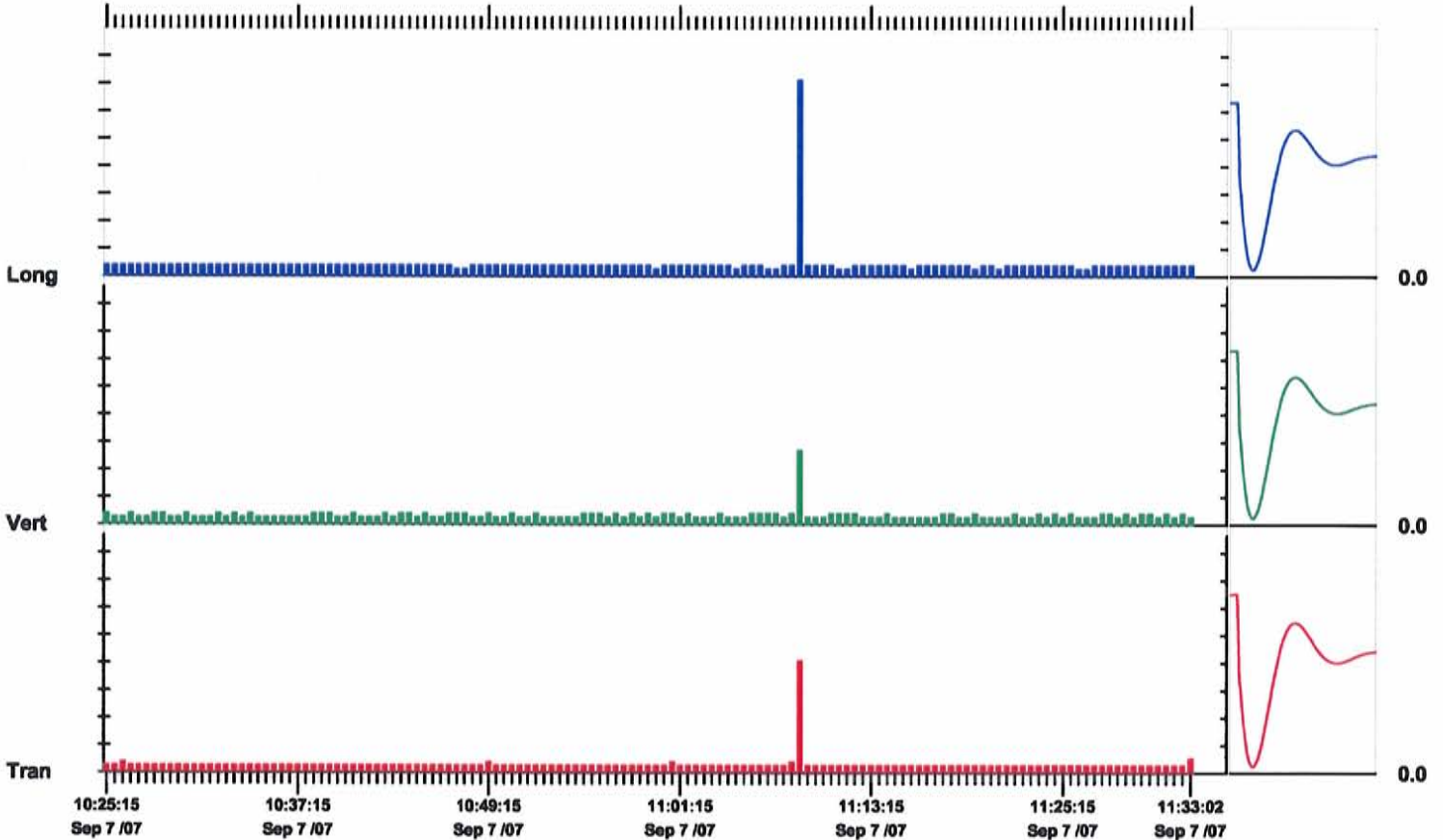
Endroit: 42, rue Archambault (Charlemagne)
 Client: Agence métropolitaine des transports (AMT)
 Utilisateur: David Noël
 Source:

Remarques

Post Event Notes

	Tran	Vert	Long	
PPV	4.06	2.67	7.11	mm/s
ZC Freq	43	47	39	Hz
Date	Sep 7 /07	Sep 7 /07	Sep 7 /07	
Time	11:08:25	11:08:25	11:08:25	
Sensorcheck	Passed	Passed	Passed	
Frequency	7.3	7.3	7.3	Hz
Overswing Ratio	3.6	3.9	4.1	

Peak Vector Sum 7.24 mm/s on September 7, 2007 at 11:08:25



Time Scale: 30 seconds /div **Amplitude Scale:** Geo: 1.000 mm/s/div

Sensorcheck

Histogram Start Time 11:34:16 September 7, 2007
Histogram Finish Time 13:00:51 September 7, 2007
Number of Intervals 1039 at 5 seconds
Range Geo :254 mm/s
Sample Rate 2048sps
Job Number: 1001

Serial Number BE10297 V 8.12-8.0 MiniMate Plus
Battery Level 6.3 Volts
Calibration April 13, 2007 by Instantel Inc.
File Name L297BU5M.T40

Notes

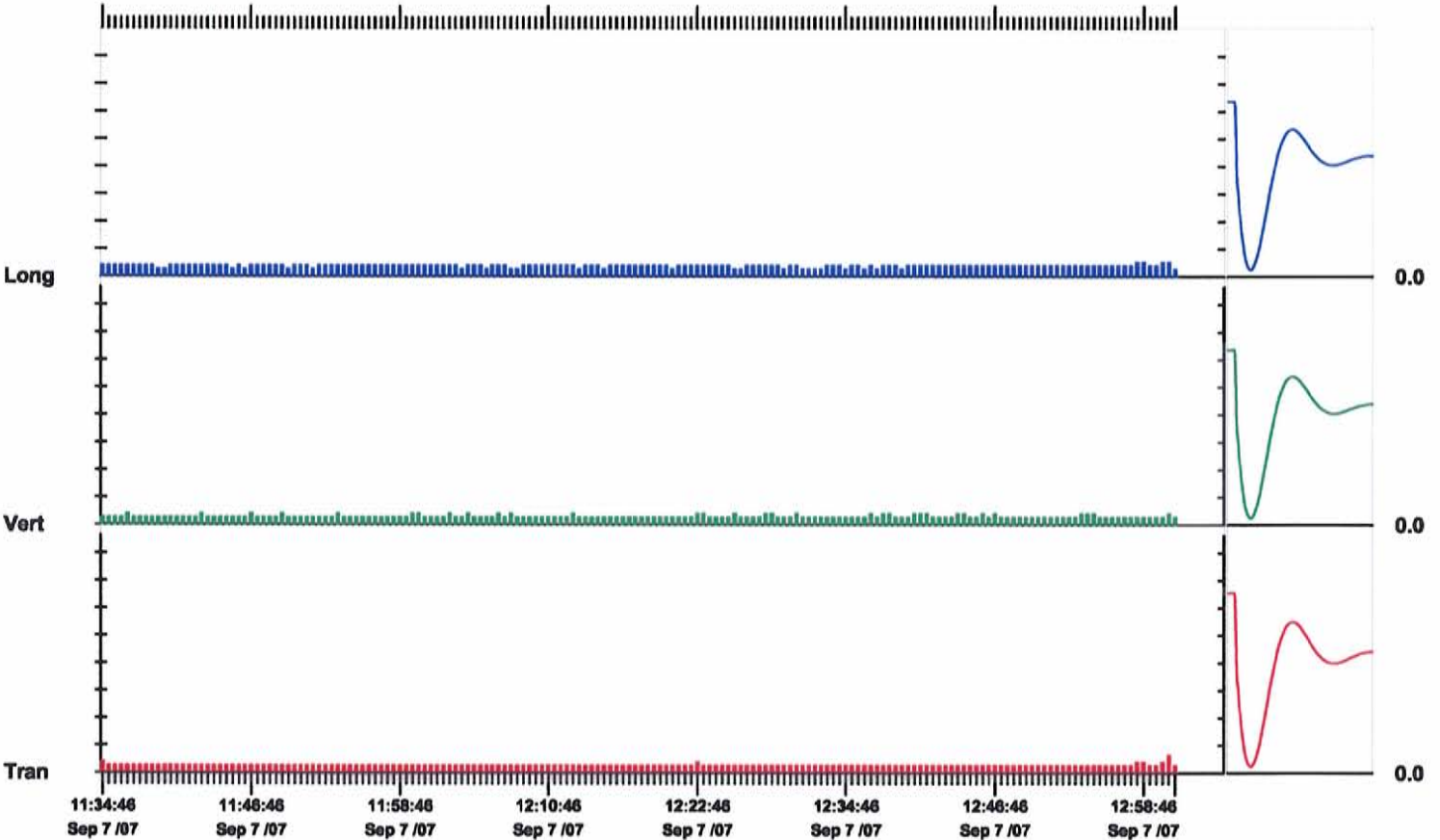
Endroit: 42, rue Archambault (Charlemagne)
 Client: Agence métropolitaine des transports (AMT)
 Utilisateur: David Noël
 Source:

Remarques

Post Event Notes

	Tran	Vert	Long	
PPV	0.635	0.381	0.508	mm/s
ZC Freq	57	>200	43	Hz
Date	Sep 7 /07	Sep 7 /07	Sep 7 /07	
Time	13:00:36	11:36:26	12:57:56	
Sensorcheck	Passed	Passed	Passed	
Frequency	7.3	7.3	7.3	Hz
Overswing Ratio	3.5	3.8	3.9	

Peak Vector Sum 0.696 mm/s on September 7, 2007 at 13:00:36



Time Scale: 30 seconds /div **Amplitude Scale:** Geo: 1.000 mm/s/div

Sensorcheck

POINT DE RELEVÉ NO. 8

Histogram Start Time 13:34:31 September 5, 2007
Histogram Finish Time 22:01:37 September 5, 2007
Number of Intervals 6085 at 5 seconds
Range Geo :254 mm/s
Sample Rate 2048sps
Job Number: 1001

Serial Number BE10297 V 8.12-8.0 MiniMate Plus
Battery Level 6.1 Volts
Calibration April 13, 2007 by Instantel Inc.
File Name L297BU23.1J0

Notes

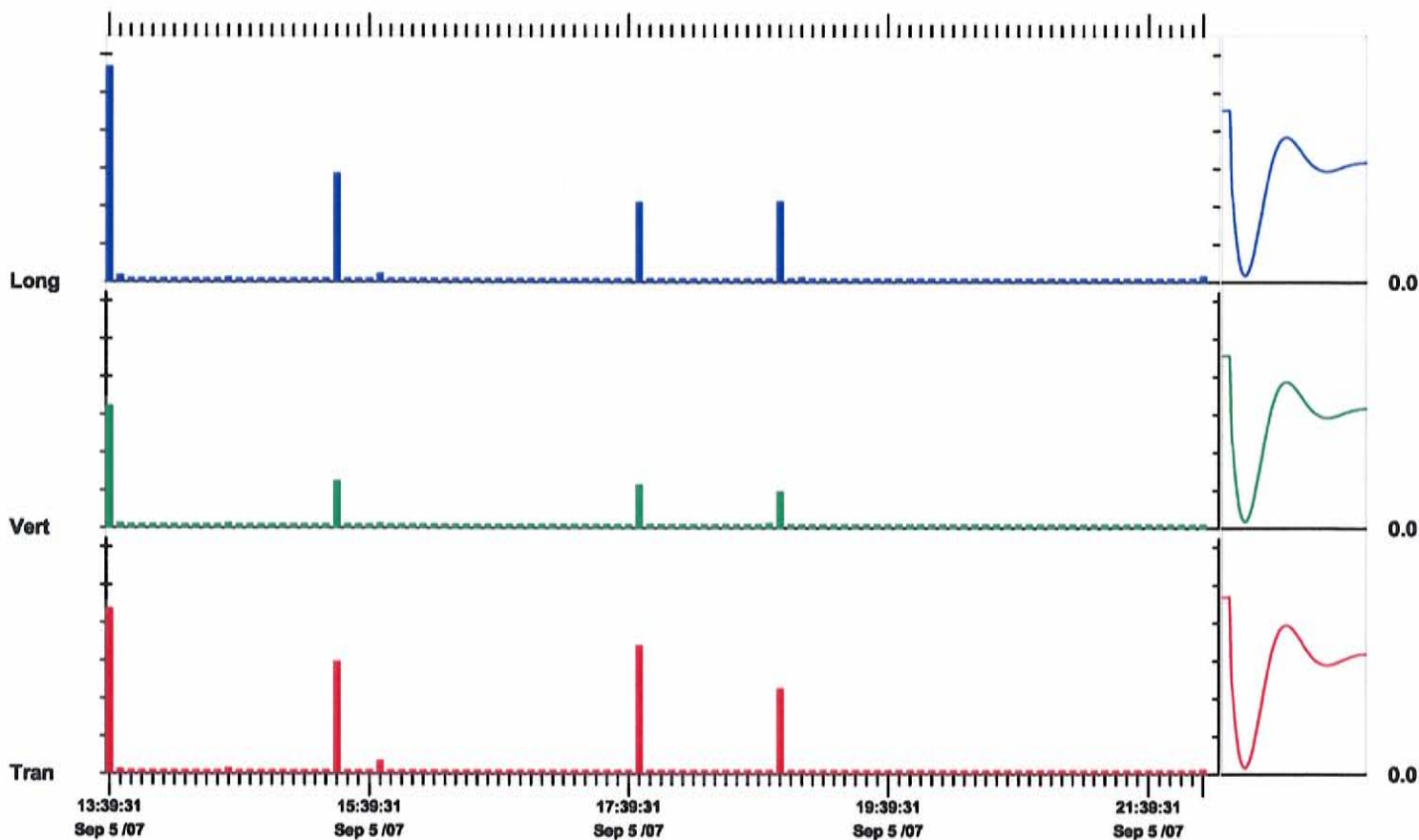
Endroit: 6, rue Trudeau (Charlemagne)
 Client: Agence métropolitaine des transports (AMT)
 Utilisateur: David Noël
 Source:

Remarques

Post Event Notes

	Tran	Vert	Long	
PPV	21.7	16.0	28.3	mm/s
ZC Freq	51	45	35	Hz
Date	Sep 5 /07	Sep 5 /07	Sep 5 /07	
Time	13:35:16	13:35:16	13:35:16	
Sensorcheck	Passed	Passed	Passed	
Frequency	7.4	7.2	7.2	Hz
Overswing Ratio	3.5	3.9	4.1	

Peak Vector Sum 30.6 mm/s on September 5, 2007 at 13:35:16



Time Scale: 5 minutes /div **Amplitude Scale:** Geo: 5.00 mm/s/div

Sensorcheck

Histogram Start Time 07:00:31 September 6, 2007
Histogram Finish Time 09:31:12 September 6, 2007
Number of Intervals 1808 at 5 seconds
Range Geo :254 mm/s
Sample Rate 2048sps
Job Number: 2001

Serial Number BE7862 V 8.01-8.0 MiniMate Plus
Battery Level 6.2 Volts
Calibration June 22, 2005 by Instantel Inc.
File Name I862BU3F.GV0

Notes

Endroit: 6, rue Trudeau (Charlemagne)
 Client: Agence métropolitaine des transports (AMT)
 Utilisateur: David Noël
 Source:

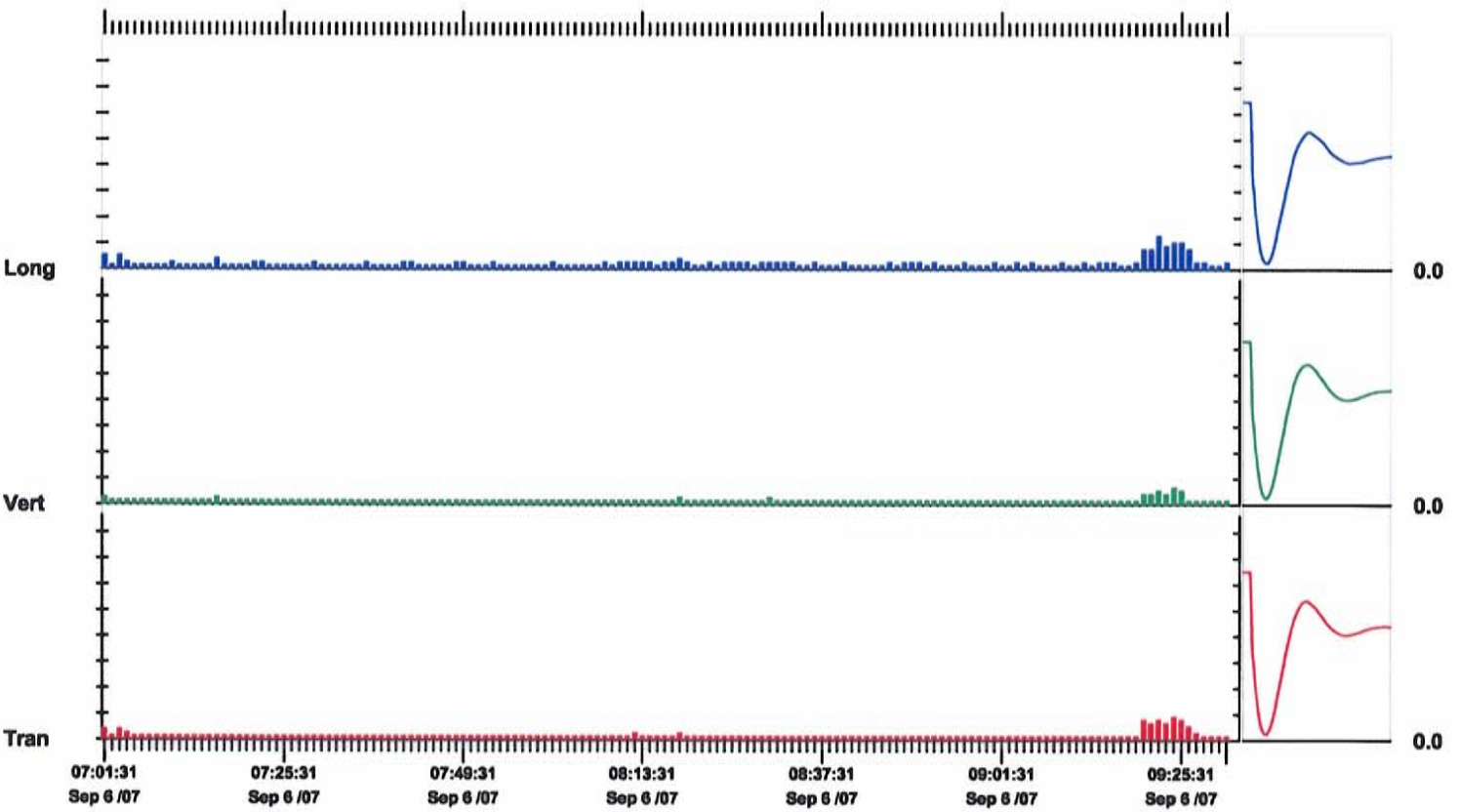
Notes

Station 7

Post Event Notes

	Tran	Vert	Long	
PPV	0.889	0.635	1.27	mm/s
ZC Freq	47	171	51	Hz
Date	Sep 6 /07	Sep 6 /07	Sep 6 /07	
Time	09:24:06	09:24:31	09:22:21	
Sensorcheck	Passed	Passed	Passed	
Frequency	7.5	7.5	7.2	Hz
Overswing Ratio	3.9	3.8	4.2	

Peak Vector Sum 1.28 mm/s on September 6, 2007 at 09:22:21



Time Scale: 1 minute /div **Amplitude Scale:** Geo: 1.000 mm/s/div

Sensorcheck

Histogram Start Time 11:07:23 September 6, 2007
Histogram Finish Time 17:25:04 September 6, 2007
Number of Intervals 4532 at 5 seconds
Range Geo :254 mm/s
Sample Rate 2048sps
Job Number: 2001

Serial Number BE7862 V 8.01-8.0 MiniMate Plus
Battery Level 6.1 Volts
Calibration June 22, 2005 by Instantel Inc.
File Name I862BU3Q.WBO

Notes

Endroit: 6, rue Trudeau (Charlemagne)
 Client: Agence métropolitaine des transports (AMT)
 Utilisateur: David Noël
 Source:

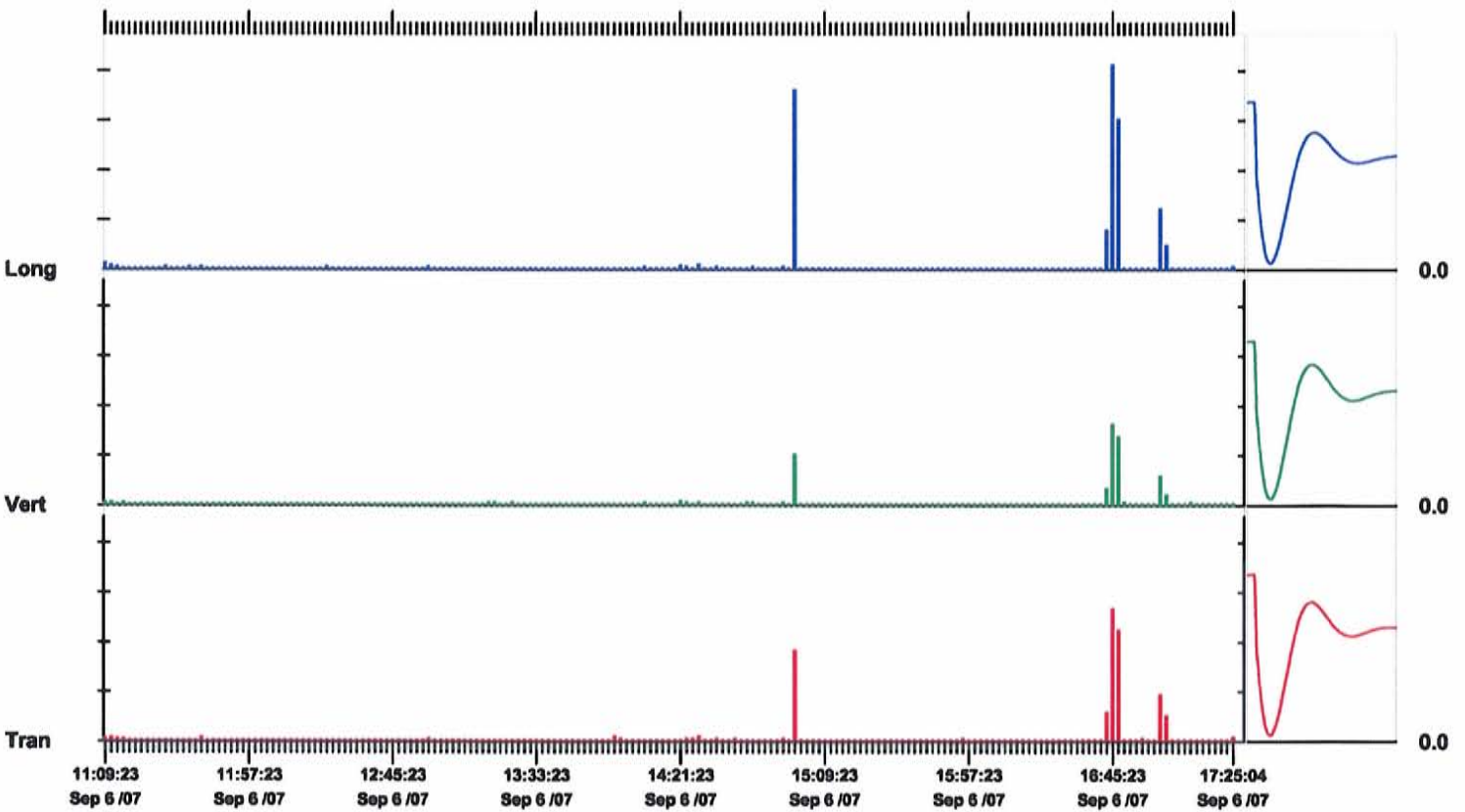
Notes

Station 7

Post Event Notes

	Tran	Vert	Long	
PPV	13.3	8.13	20.6	mm/s
ZC Freq	54	68	51	Hz
Date	Sep 6 /07	Sep 6 /07	Sep 6 /07	
Time	16:44:43	16:44:43	16:44:28	
Sensorcheck	Passed	Passed	Passed	
Frequency	7.6	7.5	7.2	Hz
Overswing Ratio	3.9	3.8	4.3	

Peak Vector Sum 20.9 mm/s on September 6, 2007 at 16:44:28



Time Scale: 2 minutes /div **Amplitude Scale:** Geo: 5.00 mm/s/div

Sensorcheck

Histogram Start Time 17:30:26 September 6, 2007
Histogram Finish Time 21:46:48 September 6, 2007
Number of Intervals 3076 at 5 seconds
Range Geo :254 mm/s
Sample Rate 2048sps
Job Number: 2001

Serial Number BE7862 V 8.01-8.0 MiniMate Plus
Battery Level 6.5 Volts
Calibration June 22, 2005 by Instantel Inc.
File Name I862BU48.MQ0

Notes

Endroit: 6, rue Trudeau (Charlemagne)
 Client: Agence métropolitaine des transports (AMT)
 Utilisateur: David Noël
 Source:

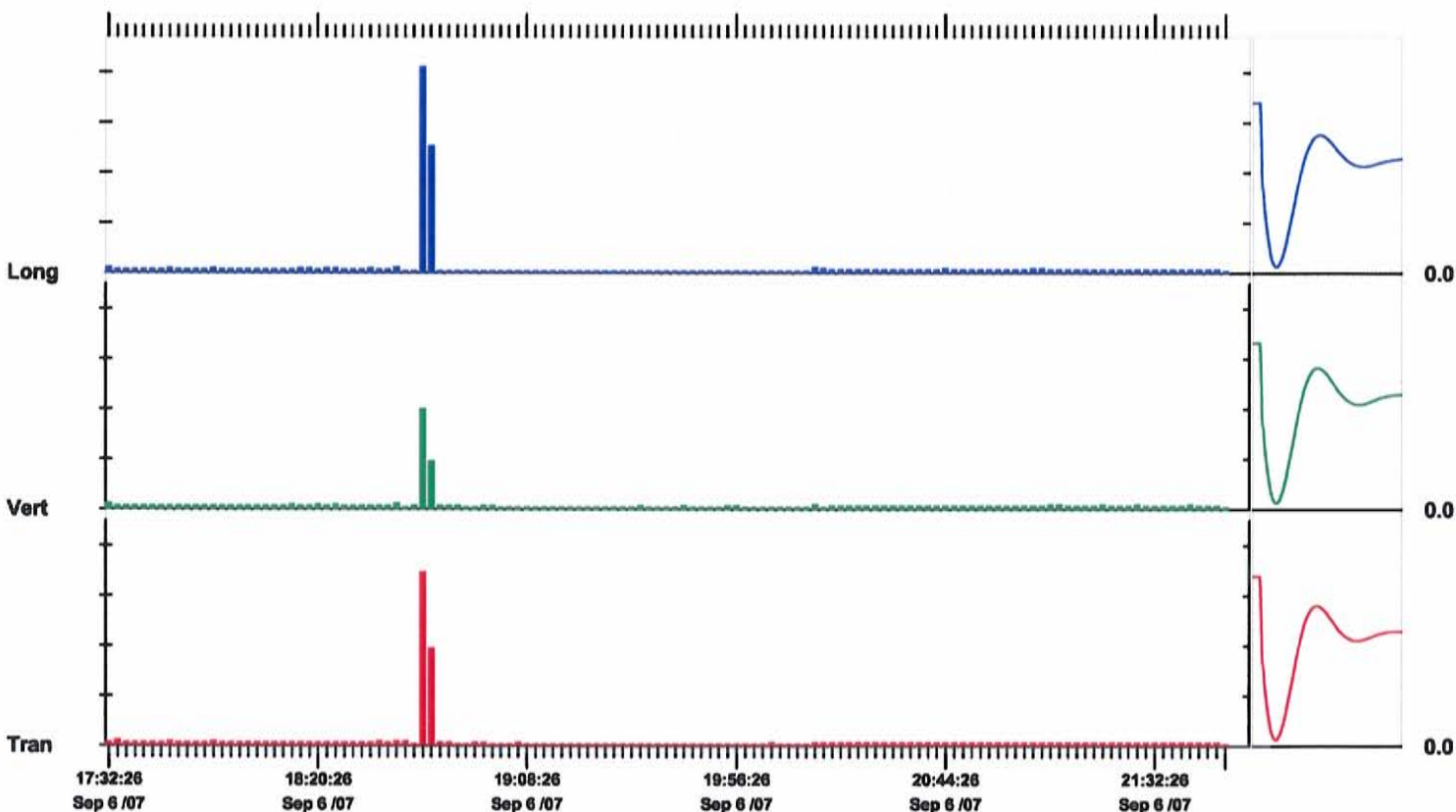
Notes

Station 7

Post Event Notes

	Tran	Vert	Long	
PPV	17.3	9.91	20.4	mm/s
ZC Freq	51	60	49	Hz
Date	Sep 6 /07	Sep 6 /07	Sep 6 /07	
Time	18:42:51	18:44:06	18:42:51	
Sensorcheck	Passed	Passed	Passed	
Frequency	7.6	7.5	7.2	Hz
Overswing Ratio	3.8	3.7	4.2	

Peak Vector Sum 23.4 mm/s on September 6, 2007 at 18:44:06



Time Scale: 2 minutes /div **Amplitude Scale:** Geo: 5.00 mm/s/div

Sensorcheck

Histogram Start Time 06:15:49 September 7, 2007
Histogram Finish Time 08:31:16 September 7, 2007
Number of Intervals 1625 at 5 seconds
Range Geo :254 mm/s
Sample Rate 2048sps
Job Number: 2001

Serial Number BE7862 V 8.01-8.0 MiniMate Plus
Battery Level 6.3 Volts
Calibration June 22, 2005 by Instantel Inc.
File Name I862BU58.2D0

Notes

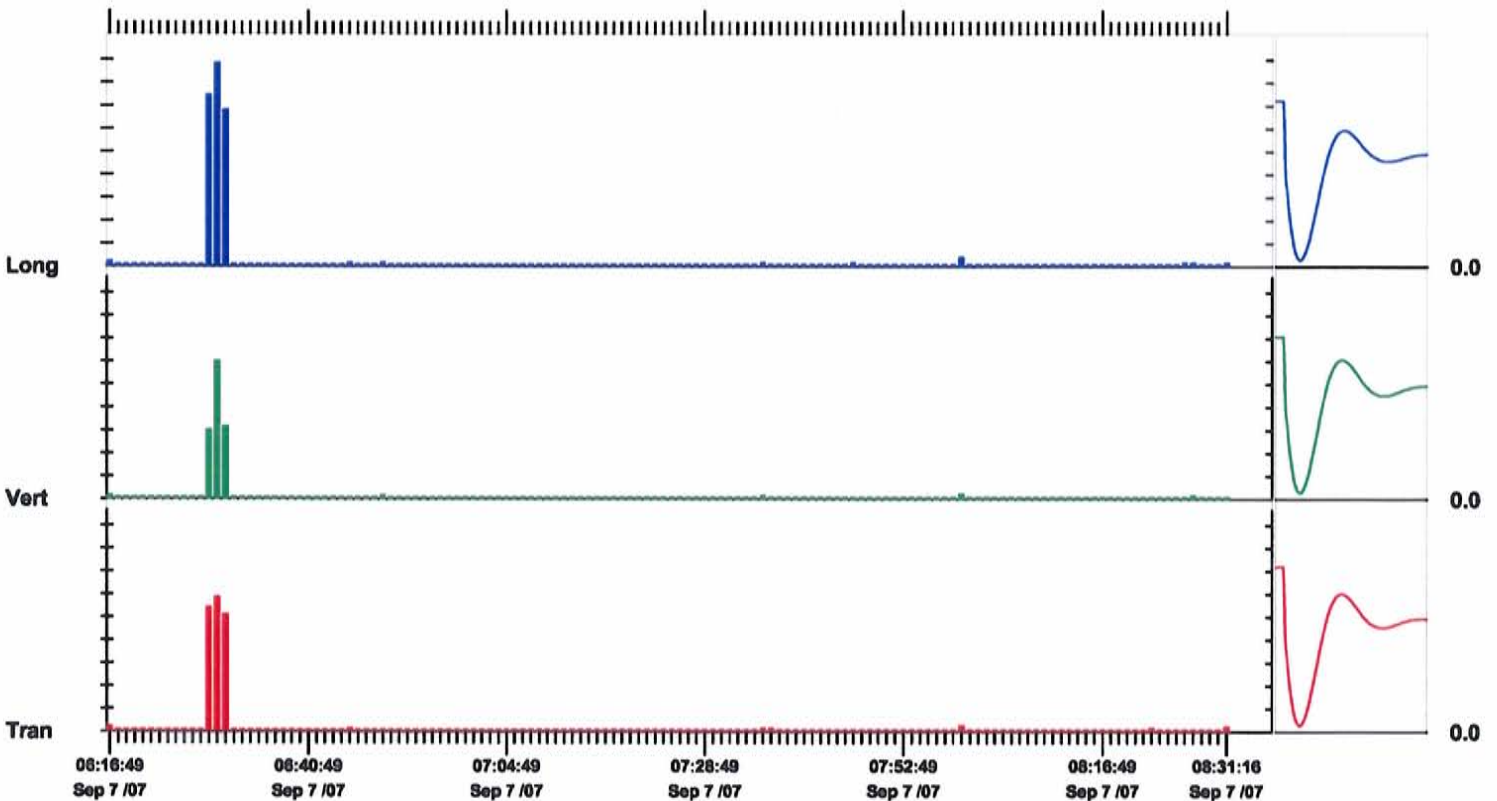
Endroit: 6, rue Trudeau (Charlemagne)
 Client: Agence métropolitaine des transports (AMT)
 Utilisateur: David Noël
 Source:

Notes

Post Event Notes

	Tran	Vert	Long	
PPV	11.7	11.9	17.7	mm/s
ZC Freq	47	60	47	Hz
Date	Sep 7 /07	Sep 7 /07	Sep 7 /07	
Time	06:29:19	06:29:19	06:29:19	
Sensorcheck	Passed	Passed	Passed	
Frequency	7.4	7.4	7.1	Hz
Overswing Ratio	3.9	3.7	4.2	

Peak Vector Sum 20.1 mm/s on September 7, 2007 at 06:29:19



Time Scale: 1 minute /div **Amplitude Scale:** Geo: 2.00 mm/s/div

Sensorcheck

Histogram Start Time 08:32:11 September 7, 2007
Histogram Finish Time 09:33:05 September 7, 2007
Number of Intervals 730 at 5 seconds
Range Geo :254 mm/s
Sample Rate 2048sps
Job Number: 2001

Serial Number BE7862 V 8.01-8.0 MiniMate Plus
Battery Level 6.3 Volts
Calibration June 22, 2005 by Instantel Inc.
File Name I862BU5E.DNO

Notes

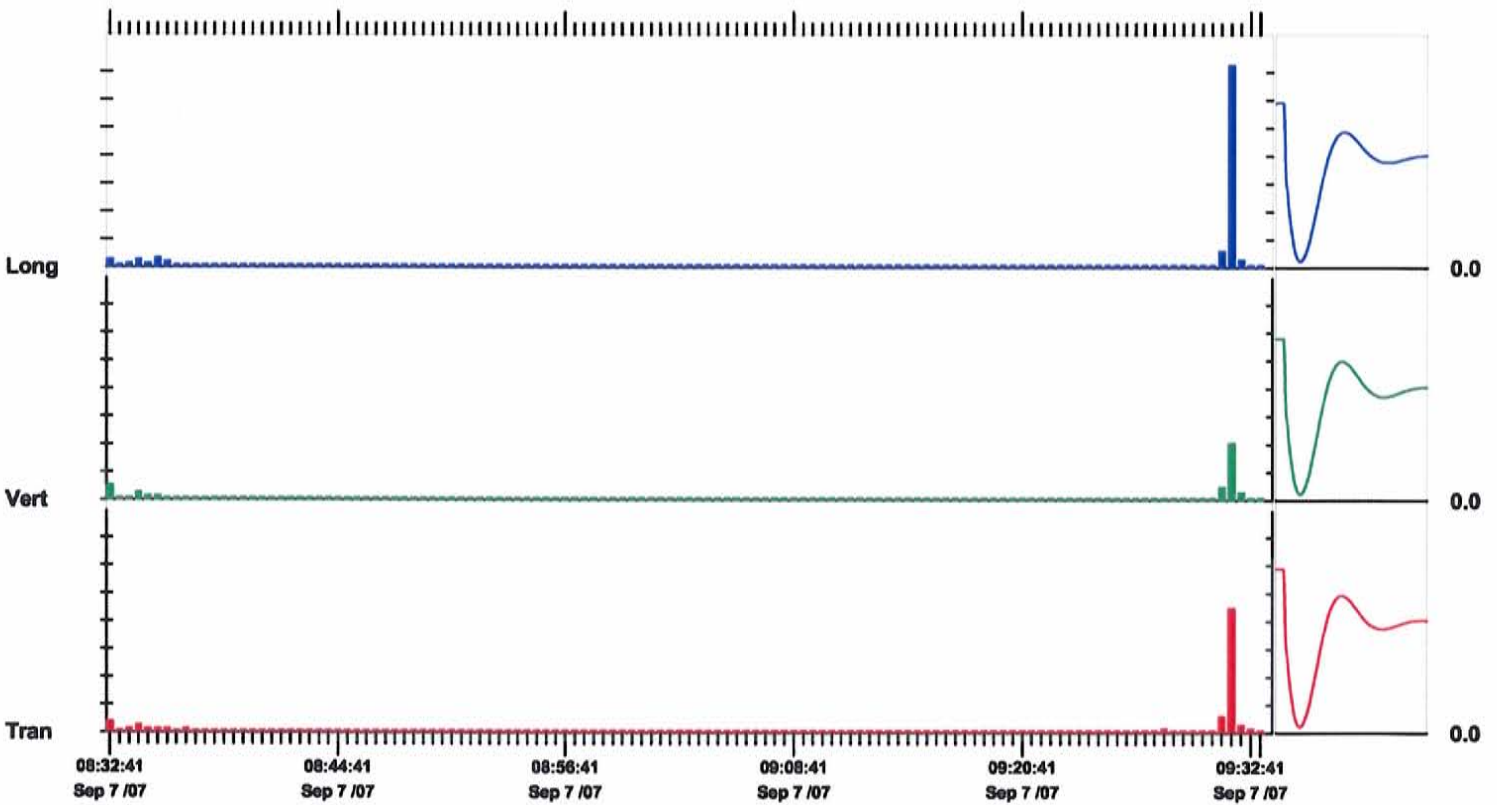
Endroit: 6, rue Trudeau (Charlemagne)
 Client: Agence métropolitaine des transports (AMT)
 Utilisateur: David Noël
 Source:

Notes

Post Event Notes

	Tran	Vert	Long	
PPV	8.89	4.06	14.5	mm/s
ZC Freq	43	47	47	Hz
Date	Sep 7 /07	Sep 7 /07	Sep 7 /07	
Time	09:31:16	09:31:16	09:31:16	
Sensorcheck	Passed	Passed	Passed	
Frequency	7.5	7.4	7.1	Hz
Overswing Ratio	3.9	3.7	4.2	

Peak Vector Sum 14.6 mm/s on September 7, 2007 at 09:31:16



Time Scale: 30 seconds /div **Amplitude Scale:** Geo: 2.00 mm/s/div

Sensorcheck

Histogram Start Time 09:34:17 September 7, 2007
Histogram Finish Time 10:16:25 September 7, 2007
Number of Intervals 505 at 5 seconds
Range Geo :254 mm/s
Sample Rate 2048sps
Job Number: 2001

Serial Number BE7862 V 8.01-8.0 MiniMate Plus
Battery Level 6.2 Volts
Calibration June 22, 2005 by Instantel Inc.
File Name I862BU5H.950

Notes

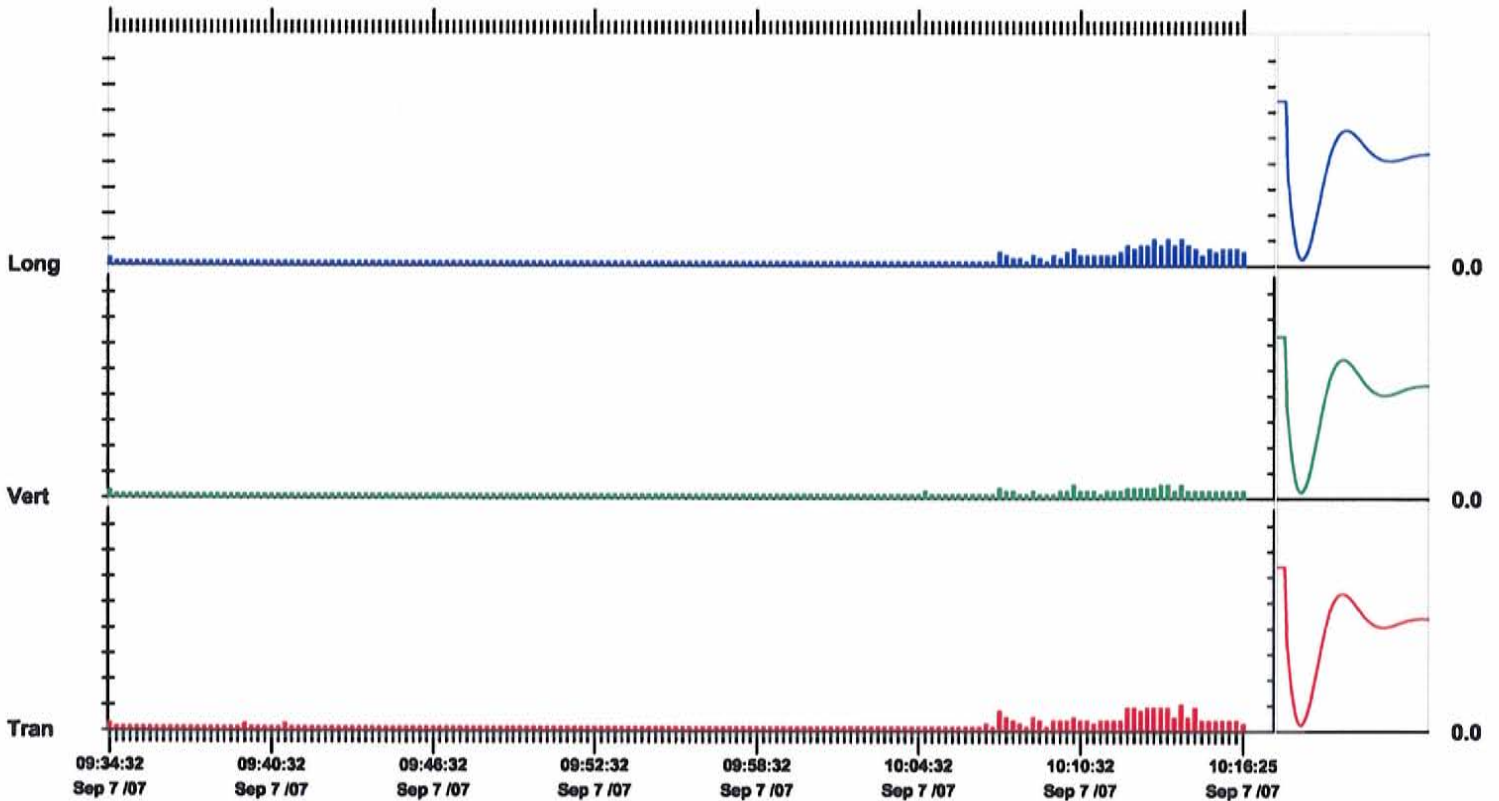
Endroit: 6, rue Trudeau (Charlemagne)
 Client: Agence métropolitaine des transports (AMT)
 Utilisateur: David Noël
 Source:

Notes

Post Event Notes

	Tran	Vert	Long	
PPV	1.02	0.508	1.02	mm/s
ZC Freq	60	73	57	Hz
Date	Sep 7 /07	Sep 7 /07	Sep 7 /07	
Time	10:14:12	10:10:12	10:13:17	
Sensorcheck	Passed	Passed	Passed	
Frequency	7.5	7.5	7.2	Hz
Overswing Ratio	3.9	3.7	4.2	

Peak Vector Sum 1.20 mm/s on September 7, 2007 at 10:14:12



Time Scale: 15 seconds /div **Amplitude Scale:** Geo: 1.000 mm/s/div

Sensorcheck

Histogram Start Time 10:46:32 September 7, 2007
Histogram Finish Time 11:08:20 September 7, 2007
Number of Intervals 261 at 5 seconds
Range Geo :254 mm/s
Sample Rate 2048sps
Job Number: 2001

Serial Number BE7862 V 8.01-8.0 MiniMate Plus
Battery Level 6.3 Volts
Calibration June 22, 2005 by Instantel Inc.
File Name I862BU5K.LK0

Notes

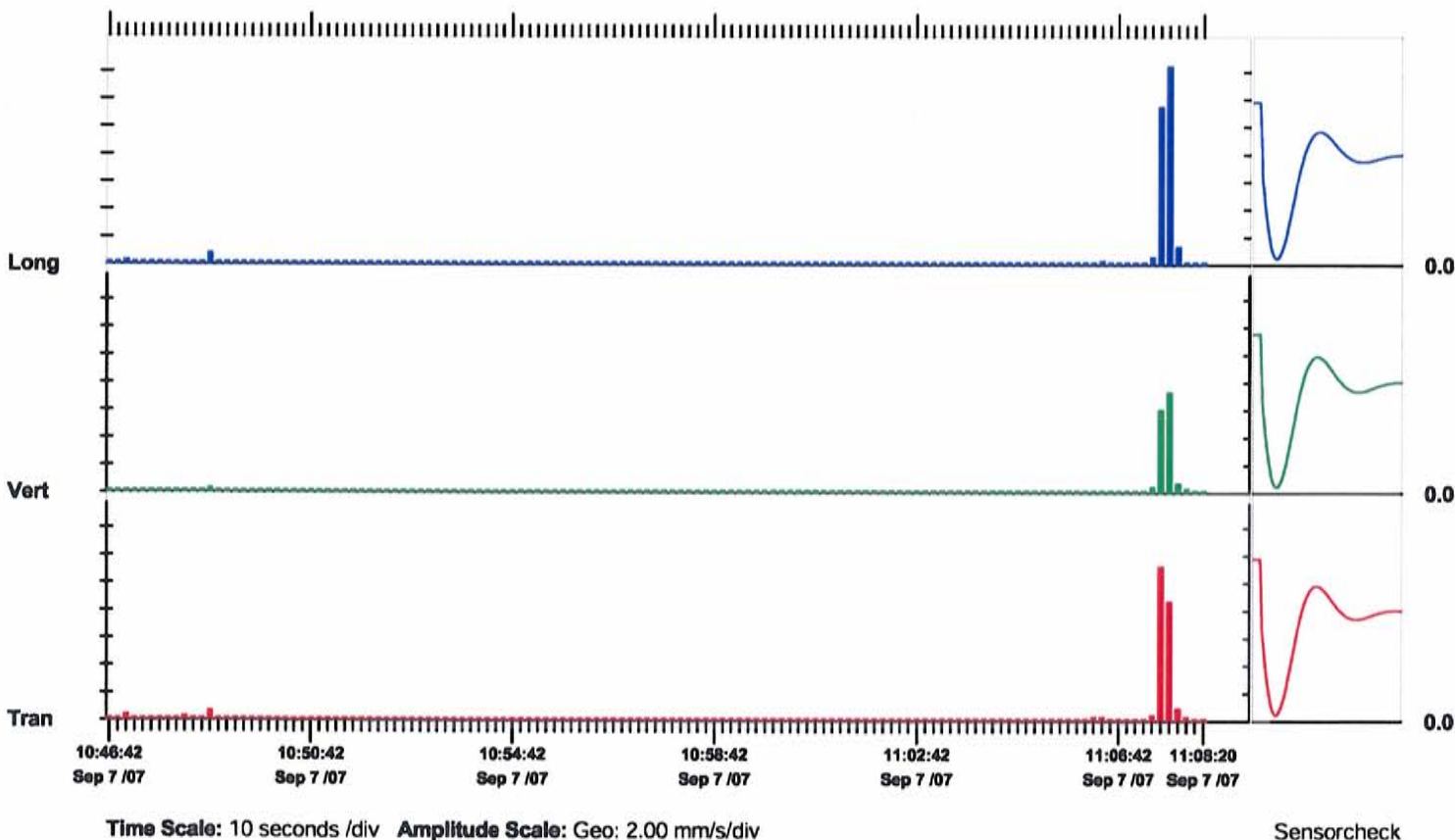
Endroit: 6, rue Trudeau (Charlemagne)
Client: Agence métropolitaine des transports (AMT)
Utilisateur: David Noël
Source:

Notes

Post Event Notes

	Tran	Vert	Long	
PPV	11.2	7.24	14.4	mm/s
ZC Freq	39	54	41	Hz
Date	Sep 7 /07	Sep 7 /07	Sep 7 /07	
Time	11:07:32	11:07:37	11:07:37	
Sensorcheck	Passed	Passed	Passed	
Frequency	7.6	7.5	7.2	Hz
Overswing Ratio	3.9	3.7	4.2	

Peak Vector Sum 15.0 mm/s on September 7, 2007 at 11:07:32



Histogram Start Time 11:09:13 September 7, 2007
Histogram Finish Time 12:53:42 September 7, 2007
Number of Intervals 1253 at 5 seconds
Range Geo :254 mm/s
Sample Rate 2048sps
Job Number: 2001

Serial Number BE7862 V 8.01-8.0 MiniMate Plus
Battery Level 6.2 Volts
Calibration June 22, 2005 by Instantel Inc.
File Name I862BU5L.NDO

Notes

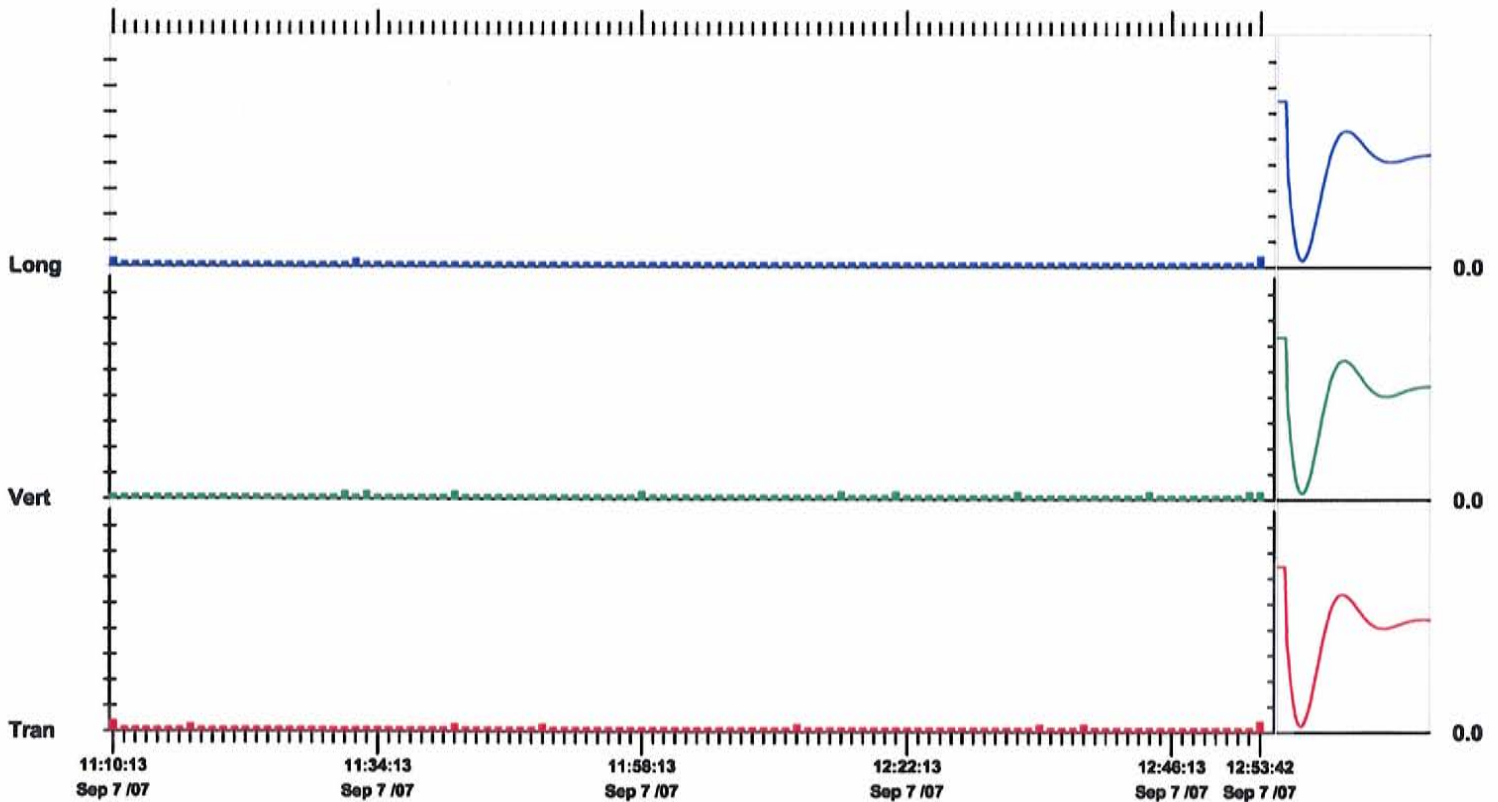
Endroit: 6, rue Trudeau (Charlemagne)
 Client: Agence métropolitaine des transports (AMT)
 Utilisateur: David Noël
 Source:

Notes

Post Event Notes

	Tran	Vert	Long	
PPV	0.381	0.254	0.381	mm/s
ZC Freq	93	>200	93	Hz
Date	Sep 7 /07	Sep 7 /07	Sep 7 /07	
Time	11:09:43	11:31:08	12:53:23	
Sensorcheck	Passed	Passed	Passed	
Frequency	7.6	7.5	7.2	Hz
Overswing Ratio	3.9	3.7	4.2	

Peak Vector Sum 0.475 mm/s on September 7, 2007 at 12:53:23



Time Scale: 1 minute /div Amplitude Scale: Geo: 1.000 mm/s/div

Sensorcheck