

Annexe I
HISTOGRAMME DES RELEVÉS VIBRATOIRES

POINT DE RELEVÉ NO. 1

Histogram Start Time 06:13:45 September 11, 2007
Histogram Finish Time 11:15:41 September 11, 2007
Number of Intervals 3623 at 5 seconds
Range Geo :254 mm/s
Sample Rate 2048sps
Job Number: 3001

Serial Number BE9554 V 8.01-8.0 MiniMate Plus
Battery Level 6.3 Volts
Calibration June 22, 2005 by Instantel Inc.
File Name K554BUCM.MX0

Notes

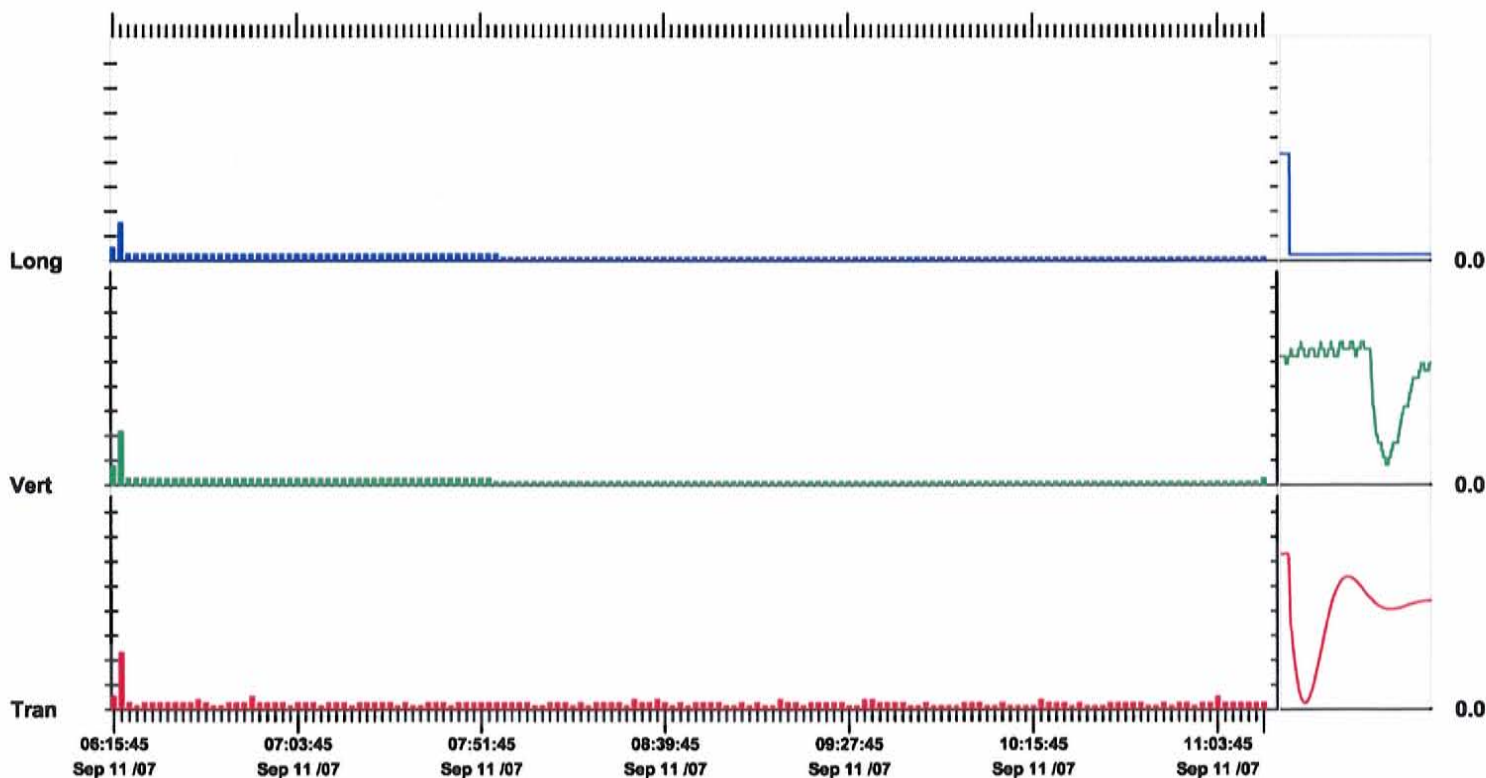
Endroit: 636, rue Brien (Mascouche)
 Client: Agence métropolitaine des transports (AMT)
 Utilisateur: David Noël
 Source:

Notes

Post Event Notes

	Tran	Vert	Long	
PPV	2.29	2.16	1.52	mm/s
ZC Freq	<1.0	43	19.0	Hz
Date	Sep 11 /07	Sep 11 /07	Sep 11 /07	
Time	06:16:10	06:16:10	06:16:10	
Sensorcheck	Passed	Check	Check	
Frequency	7.2	7.4	1024.0	Hz
Overswing Ratio	3.9	6.0	0.0	

Peak Vector Sum 2.65 mm/s on September 11, 2007 at 06:16:10



Time Scale: 2 minutes /div **Amplitude Scale:** Geo: 1.000 mm/s/div

Sensorcheck

Histogram Start Time 11:17:21 September 11, 2007
Histogram Finish Time 15:10:02 September 11, 2007
Number of Intervals 2792 at 5 seconds
Range Geo :254 mm/s
Sample Rate 2048sps
Job Number: 3001

Serial Number BE9554 V 8.01-8.0 MiniMate Plus
Battery Level 6.2 Volts
Calibration June 22, 2005 by Istantel Inc.
File Name K554BUD0.OX0

Notes

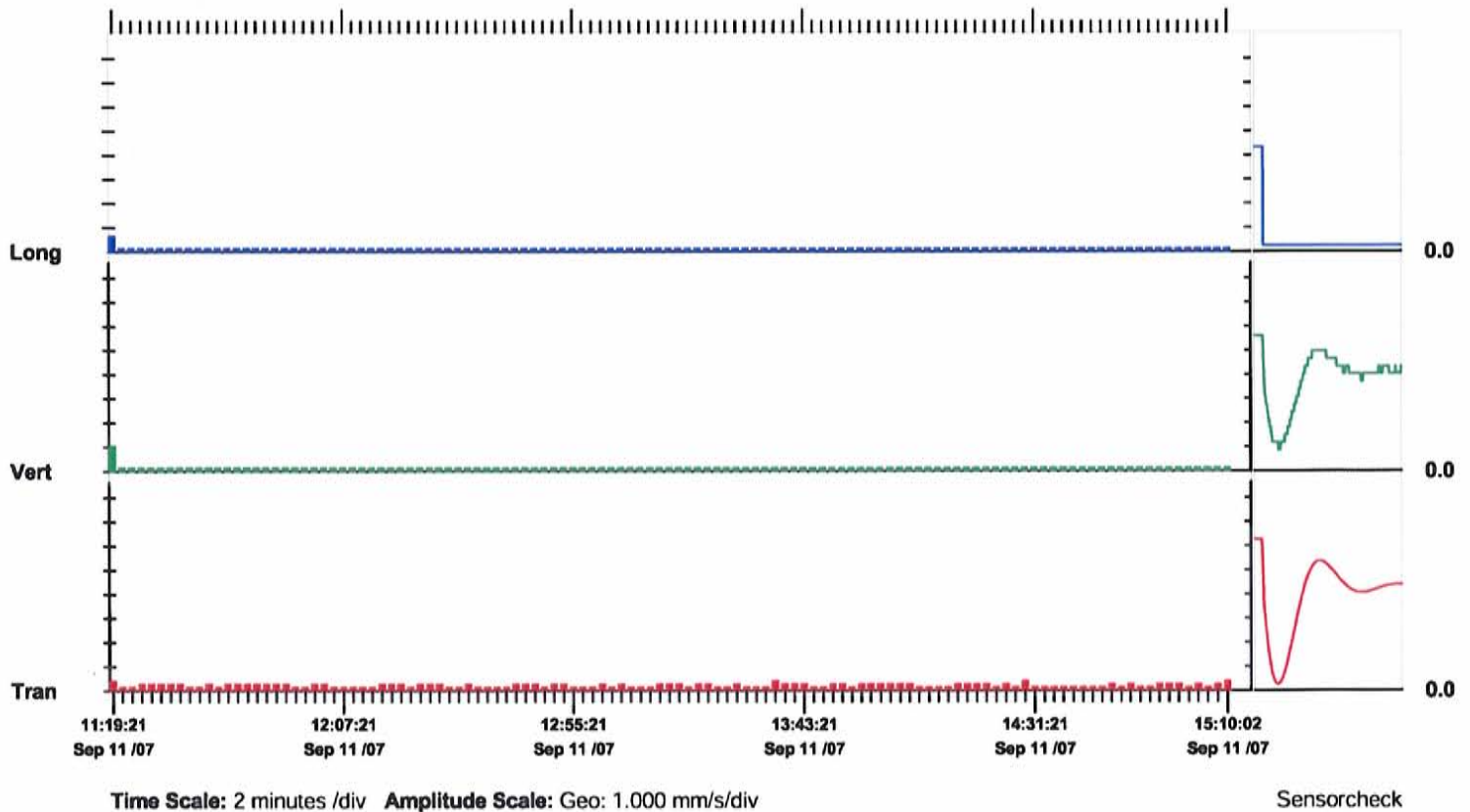
Endroit: 636, rue Brien (Mascouche)
 Client: Agence métropolitaine des transports (AMT)
 Utilisateur: David Noël
 Source:

Notes

Post Event Notes

	Tran	Vert	Long	
PPV	0.381	1.02	0.635	mm/s
ZC Freq	3.0	41	39	Hz
Date	Sep 11 /07	Sep 11 /07	Sep 11 /07	
Time	11:18:11	11:18:11	11:18:11	
Sensorcheck	Passed	Check	Check	
Frequency	7.3	7.2	1024.0	Hz
Overswing Ratio	3.9	5.5	0.0	

Peak Vector Sum 1.14 mm/s on September 11, 2007 at 11:18:11



Histogram Start Time 15:13:23 September 11, 2007
Histogram Finish Time 19:19:51 September 11, 2007
Number of Intervals 2957 at 5 seconds
Range Geo :254 mm/s
Sample Rate 2048sps
Job Number: 3001

Serial Number BE9554 V 8.01-8.0 MiniMate Plus
Battery Level 6.1 Volts
Calibration June 22, 2005 by Instantel Inc.
File Name K554BUDB.MB0

Notes

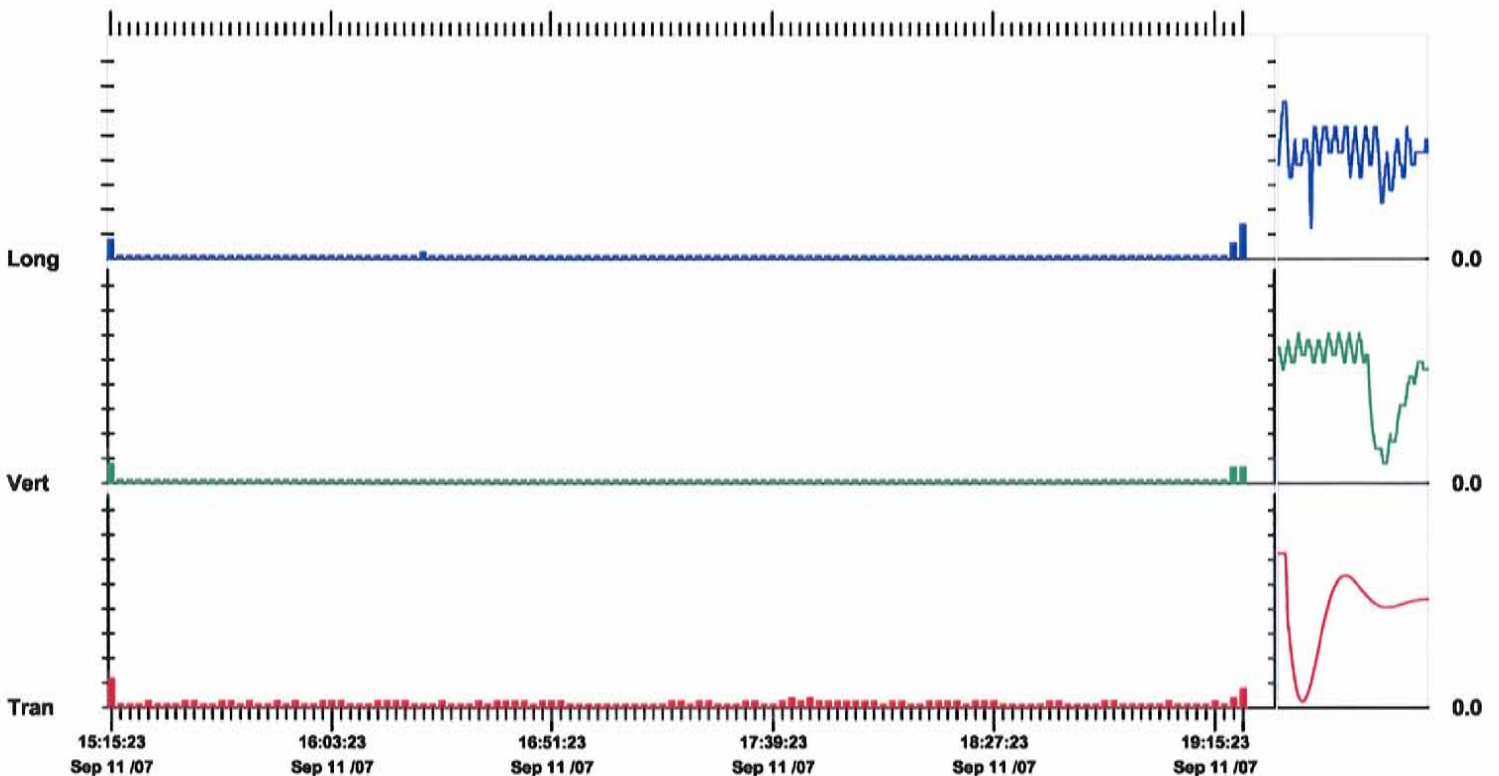
Endroit: 636, rue Brien (Mascouche)
 Client: Agence métropolitaine des transports (AMT)
 Utilisateur: David Noël
 Source:

Notes

Post Event Notes

	Tran	Vert	Long	
PPV	1.14	0.762	1.40	mm/s
ZC Freq	<1.0	54	25	Hz
Date	Sep 11 /07	Sep 11 /07	Sep 11 /07	
Time	15:13:53	15:13:48	19:19:43	
Sensorcheck	Passed	Check	Check	
Frequency	7.2	7.5	60.2	Hz
Overswing Ratio	4.0	6.0	0.3	

Peak Vector Sum 1.54 mm/s on September 11, 2007 at 19:19:43



Time Scale: 2 minutes /div **Amplitude Scale:** Geo: 1.000 mm/s/div

Sensorcheck

Histogram Start Time 19:21:46 September 11, 2007
Histogram Finish Time 22:08:42 September 11, 2007
Number of Intervals 2003 at 5 seconds
Range Geo :254 mm/s
Sample Rate 2048sps
Job Number: 3001

Serial Number BE9554 V 8.01-8.0 MiniMate Plus
Battery Level 6.1 Volts
Calibration June 22, 2005 by InstanTel Inc.
File Name K554BUDN.4A0

Notes

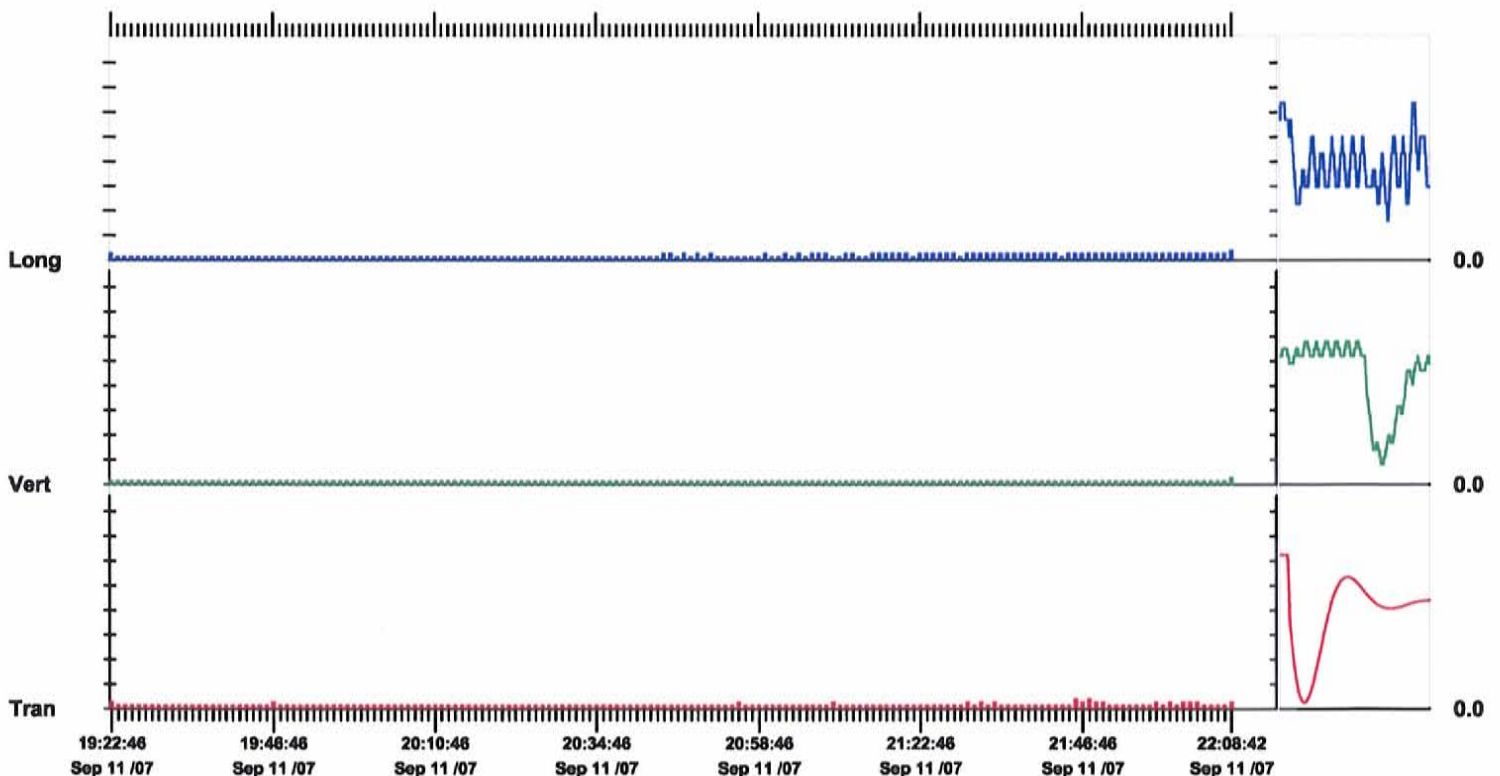
Endroit: 636, rue Brien (Mascouche)
 Client: Agence métropolitaine des transports (AMT)
 Utilisateur: David Noël
 Source:

Notes

Post Event Notes

	Tran	Vert	Long	
PPV	0.381	0.254	0.381	mm/s
ZC Freq	102	>200	23	Hz
Date	Sep 11 /07	Sep 11 /07	Sep 11 /07	
Time	21:45:46	22:08:31	22:08:31	
Sensorcheck	Passed	Check	Check	
Frequency	7.2	7.4	18.6	Hz
Overswing Ratio	4.0	4.0	1.5	

Peak Vector Sum 0.458 mm/s on September 11, 2007 at 22:08:31



Time Scale: 1 minute /div **Amplitude Scale:** Geo: 1.000 mm/s/div

Sensorcheck

Histogram Start Time 06:31:41 September 12, 2007
Histogram Finish Time 09:02:03 September 12, 2007
Number of Intervals 1804 at 5 seconds
Range Geo :254 mm/s
Sample Rate 2048sps
Job Number: 3001

Serial Number BE9554 V 8.01-8.0 MiniMate Plus
Battery Level 6.3 Volts
Calibration June 22, 2005 by InstanTel Inc.
File Name K554BUEI.4T0

Notes

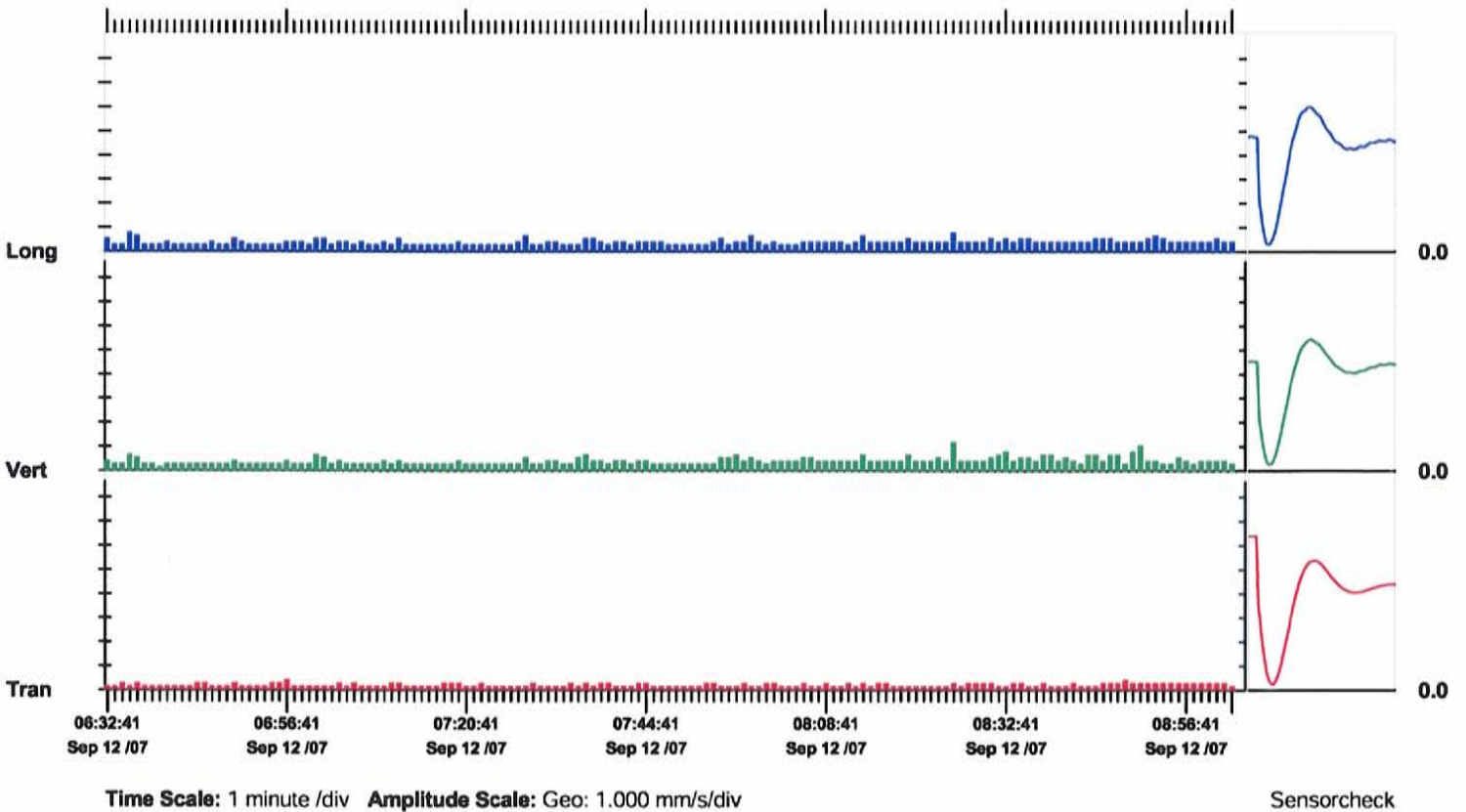
Endroit: 636, rue Brien (Mascouche)
 Client: Agence métropolitaine des transports (AMT)
 Utilisateur: David Noël
 Source:

Notes

Post Event Notes

	Tran	Vert	Long	
PPV	0.381	1.14	0.762	mm/s
ZC Freq	26	>200	1.8	Hz
Date	Sep 12 /07	Sep 12 /07	Sep 12 /07	
Time	06:55:46	08:24:51	06:35:36	
Sensorcheck	Passed	Check	Check	
Frequency	7.4	7.8	8.8	Hz
Overswing Ratio	3.9	3.6	2.4	

Peak Vector Sum 1.40 mm/s on September 12, 2007 at 08:24:51



Histogram Start Time 09:30:06 September 12, 2007
Histogram Finish Time 16:26:47 September 12, 2007
Number of Intervals 5000 at 5 seconds
Range Geo :254 mm/s
Sample Rate 2048sps
Job Number: 3001

Serial Number BE9554 V 8.01-8.0 MiniMate Plus
Battery Level 6.2 Volts
Calibration June 22, 2005 by Instantel Inc.
File Name K554BUEQ.E60

Notes

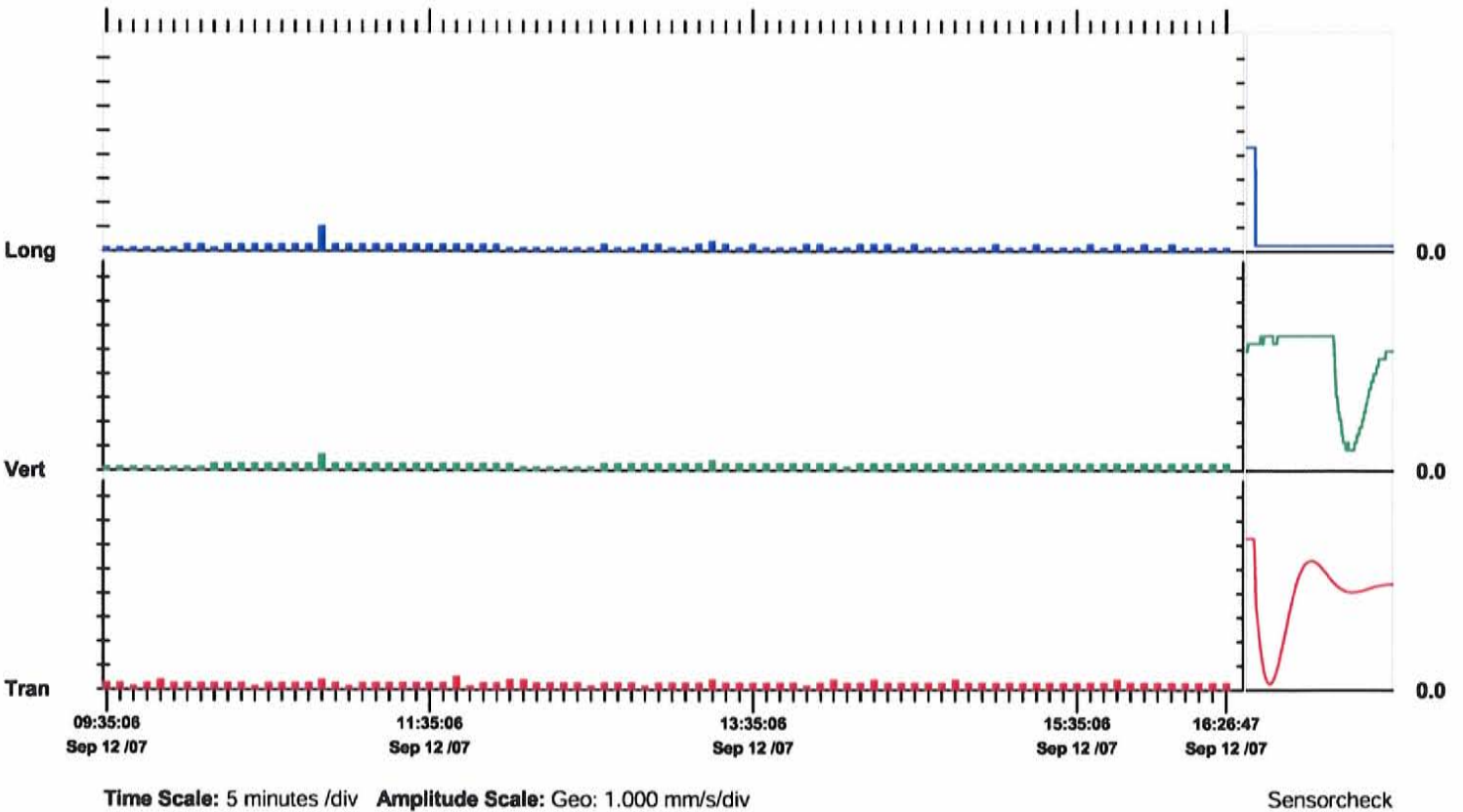
Endroit: 636, rue Brien (Mascouche)
 Client: Agence métropolitaine des transports (AMT)
 Utilisateur: David Noël
 Source:

Notes

Post Event Notes

	Tran	Vert	Long	
PPV	0.508	0.635	1.02	mm/s
ZC Freq	17.7	73	64	Hz
Date	Sep 12 /07	Sep 12 /07	Sep 12 /07	
Time	11:43:46	10:53:36	10:53:36	
Sensorcheck	Passed	Check	Check	
Frequency	7.3	7.1	1024.0	Hz
Overswing Ratio	3.9	5.5	0.0	

Peak Vector Sum 1.20 mm/s on September 12, 2007 at 10:53:36



Histogram Start Time 16:28:09 September 12, 2007
Histogram Finish Time 22:12:58 September 12, 2007
Number of Intervals 4137 at 5 seconds
Range Geo :254 mm/s
Sample Rate 2048sps
Job Number: 3001

Serial Number BE9554 V 8.01-8.0 MiniMate Plus
Battery Level 6.0 Volts
Calibration June 22, 2005 by Instantel Inc.
File Name K554BUF9.QX0

Notes

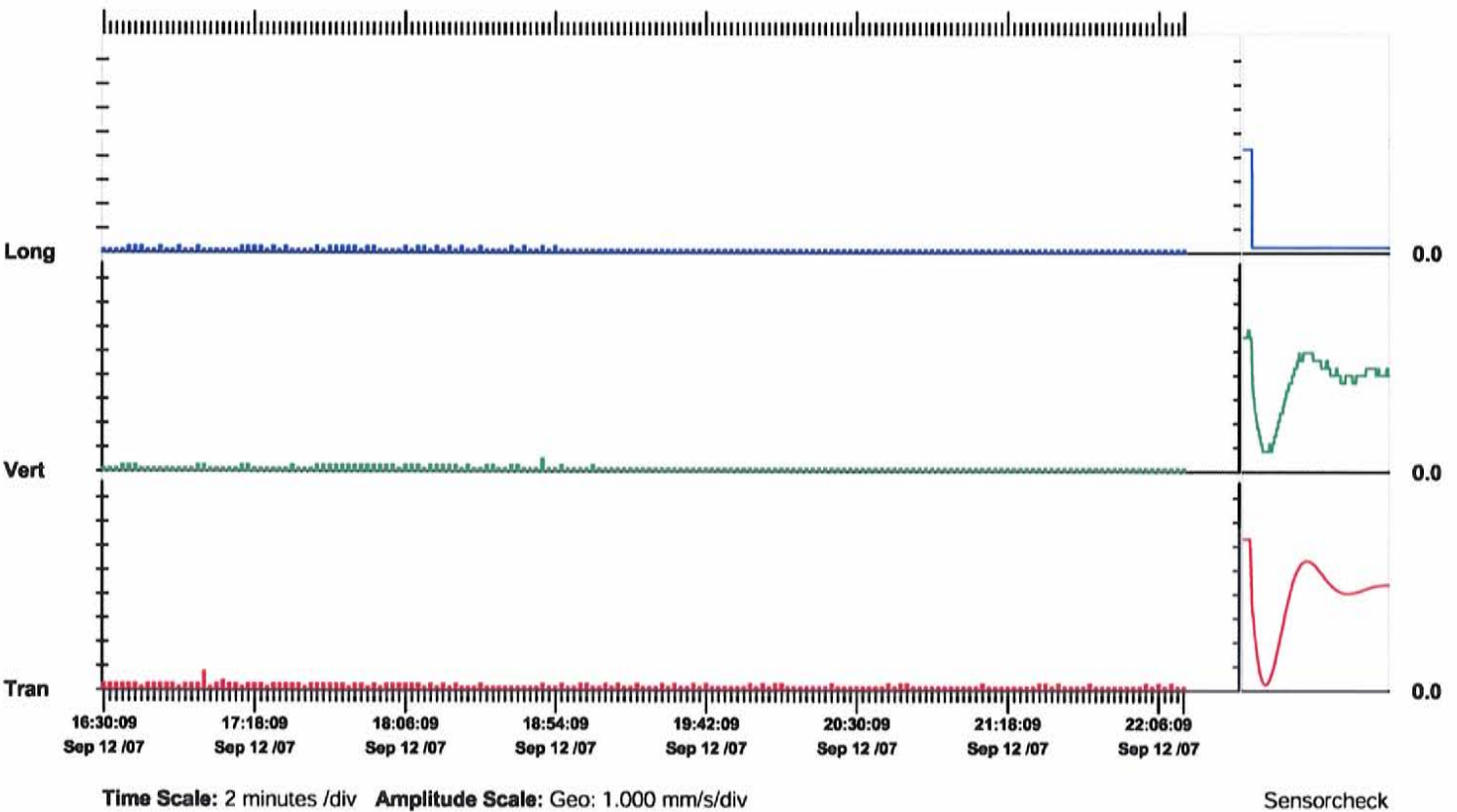
Endroit: 636, rue Brien (Mascouche)
 Client: Agence métropolitaine des transports (AMT)
 Utilisateur: David Noël
 Source:

Notes

Post Event Notes

	Tran	Vert	Long	
PPV	0.762	0.508	0.254	mm/s
ZC Freq	13.1	6.0	>200	Hz
Date	Sep 12 /07	Sep 12 /07	Sep 12 /07	
Time	17:01:54	18:48:59	16:36:29	
Sensorcheck	Passed	Check	Check	
Frequency	7.3	7.0	1024.0	Hz
Overswing Ratio	3.8	5.5	0.0	

Peak Vector Sum 0.762 mm/s on September 12, 2007 at 17:01:54



Histogram Start Time 06:09:09 September 13, 2007
Histogram Finish Time 09:01:02 September 13, 2007
Number of Intervals 2062 at 5 seconds
Range Geo :254 mm/s
Sample Rate 2048sps
Job Number: 3001

Serial Number BE9554 V 8.01-8.0 MiniMate Plus
Battery Level 6.3 Volts
Calibration June 22, 2005 by Instantel Inc.
File Name K554BUGB.R90

Notes

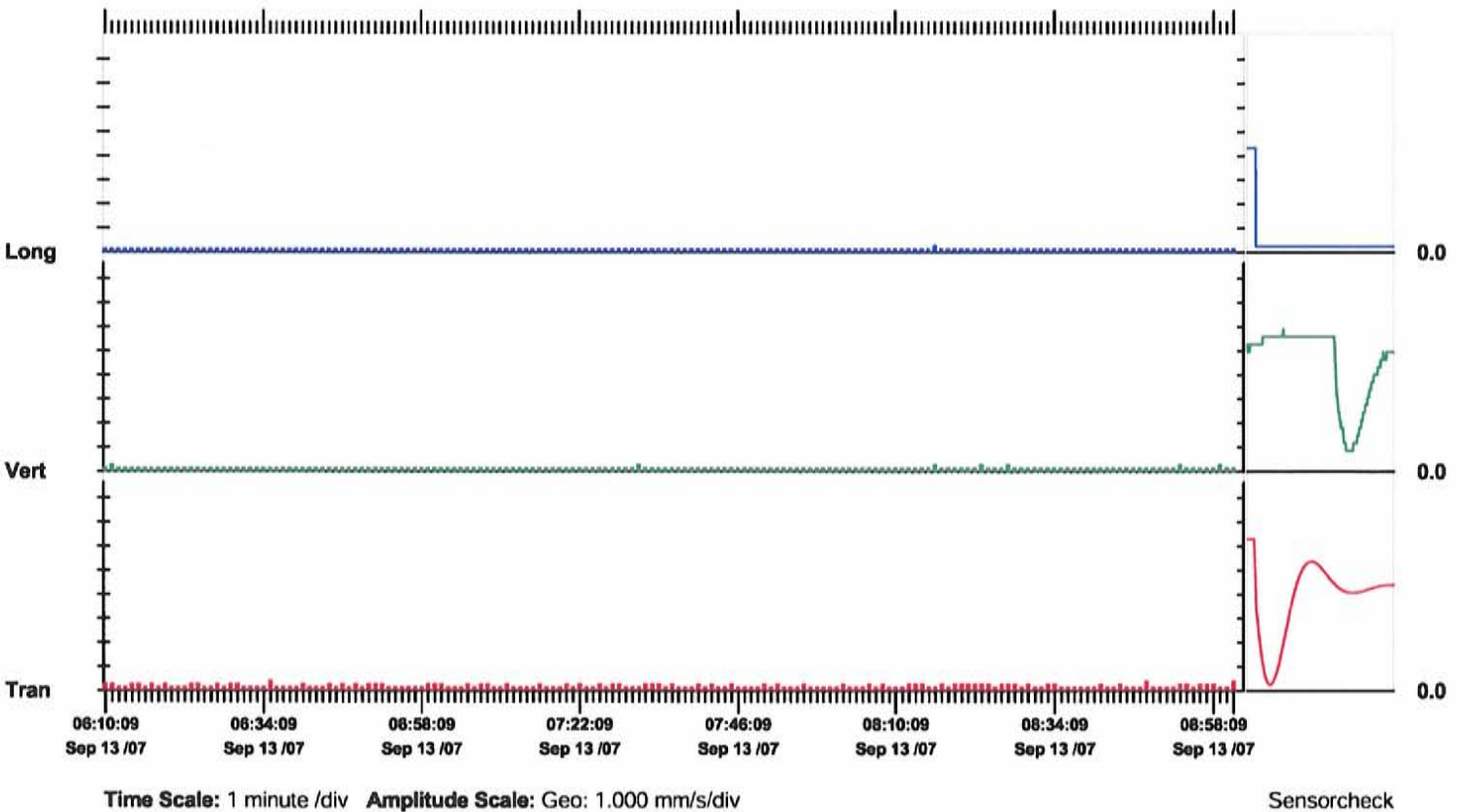
Endroit: 636, rue Brien (Mascouche)
 Client: Agence métropolitaine des transports (AMT)
 Utilisateur: David Noël
 Source:

Notes

Post Event Notes

	Tran	Vert	Long	
PPV	0.381	0.254	0.254	mm/s
ZC Freq	22	>200	>200	Hz
Date	Sep 13 /07	Sep 13 /07	Sep 13 /07	
Time	06:34:34	06:10:24	08:16:04	
Sensorcheck	Passed	Check	Check	
Frequency	7.4	7.0	1024.0	Hz
Overswing Ratio	3.9	5.5	0.0	

Peak Vector Sum 0.402 mm/s on September 13, 2007 at 08:47:49



POINT DE RELEVÉ NO. 2

Histogram Start Time 06:39:18 September 11, 2007
Histogram Finish Time 07:03:29 September 11, 2007
Number of Intervals 290 at 5 seconds
Range Geo :254 mm/s
Sample Rate 2048sps
Job Number: 1

Serial Number BE10301 V 8.01-8.0 MiniMate Plus
Battery Level 6.3 Volts
Calibration June 24, 2005 by Instantel.Inc
File Name L301BUCN.T10

Notes

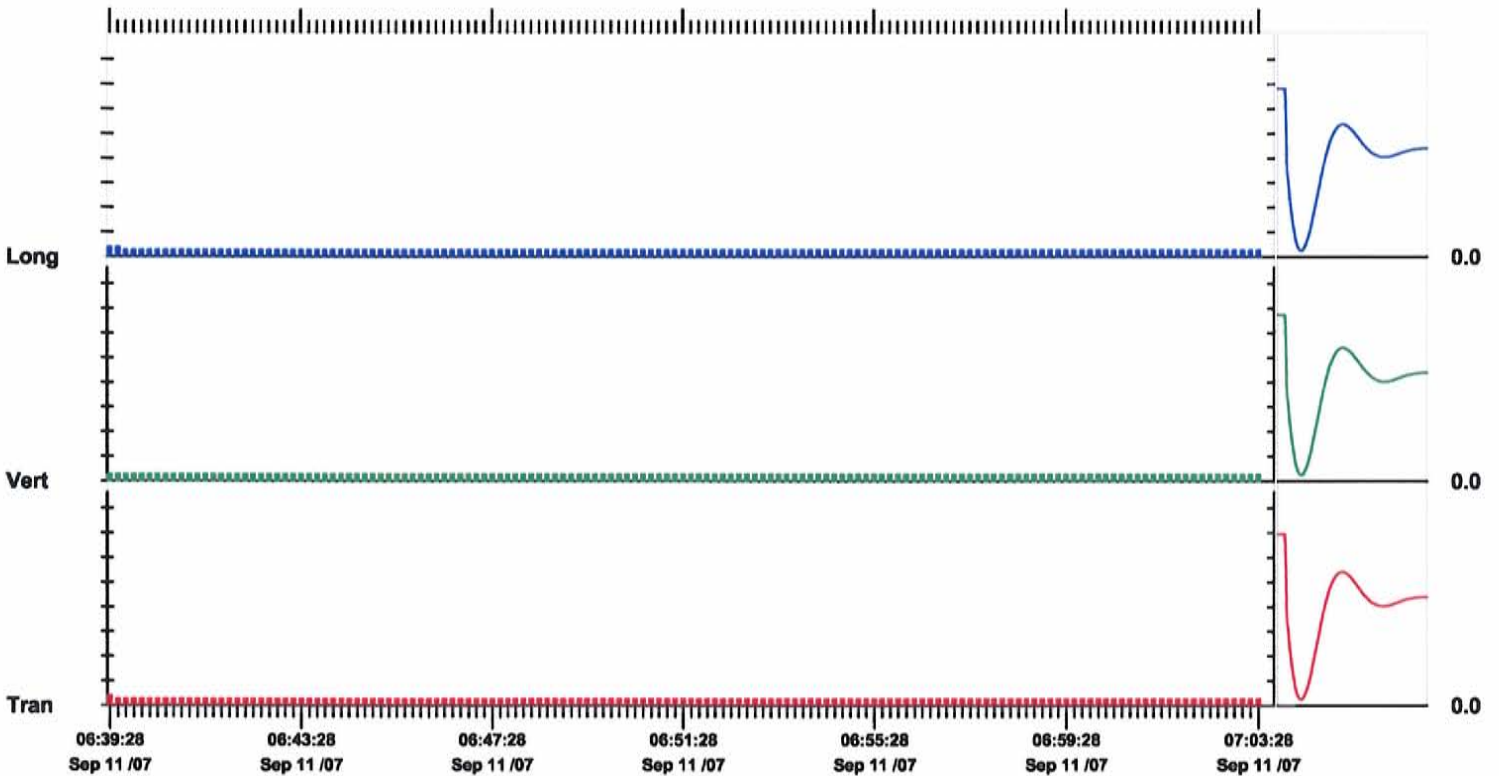
Endroit 1036, rue du Terroir (Terrebone)
 Client: Agence métropolitaine des transports (AMT)
 Utilisateur: David Noël
 Source:

Notes

Post Event Notes

	Tran	Vert	Long	
PPV	0.381	0.254	0.381	mm/s
ZC Freq	24	>200	23	Hz
Date	Sep 11 /07	Sep 11 /07	Sep 11 /07	
Time	06:39:23	06:39:23	06:39:23	
Sensorcheck	Passed	Passed	Passed	
Frequency	7.5	7.4	7.4	Hz
Overswing Ratio	3.7	3.8	3.9	

Peak Vector Sum 0.475 mm/s on September 11, 2007 at 06:39:23



Time Scale: 10 seconds /div **Amplitude Scale:** Geo: 1.000 mm/s/div

Sensorcheck

Histogram Start Time 07:16:02 September 11, 2007
Histogram Finish Time 15:34:53 September 11, 2007
Number of Intervals 5986 at 5 seconds
Range Geo :254 mm/s
Sample Rate 2048sps
Job Number: 1

Serial Number BE10301 V 8.01-8.0 MiniMate Plus
Battery Level 6.2 Volts
Calibration June 24, 2005 by Instantel.Inc
File Name L301BUCP.IQ0

Notes

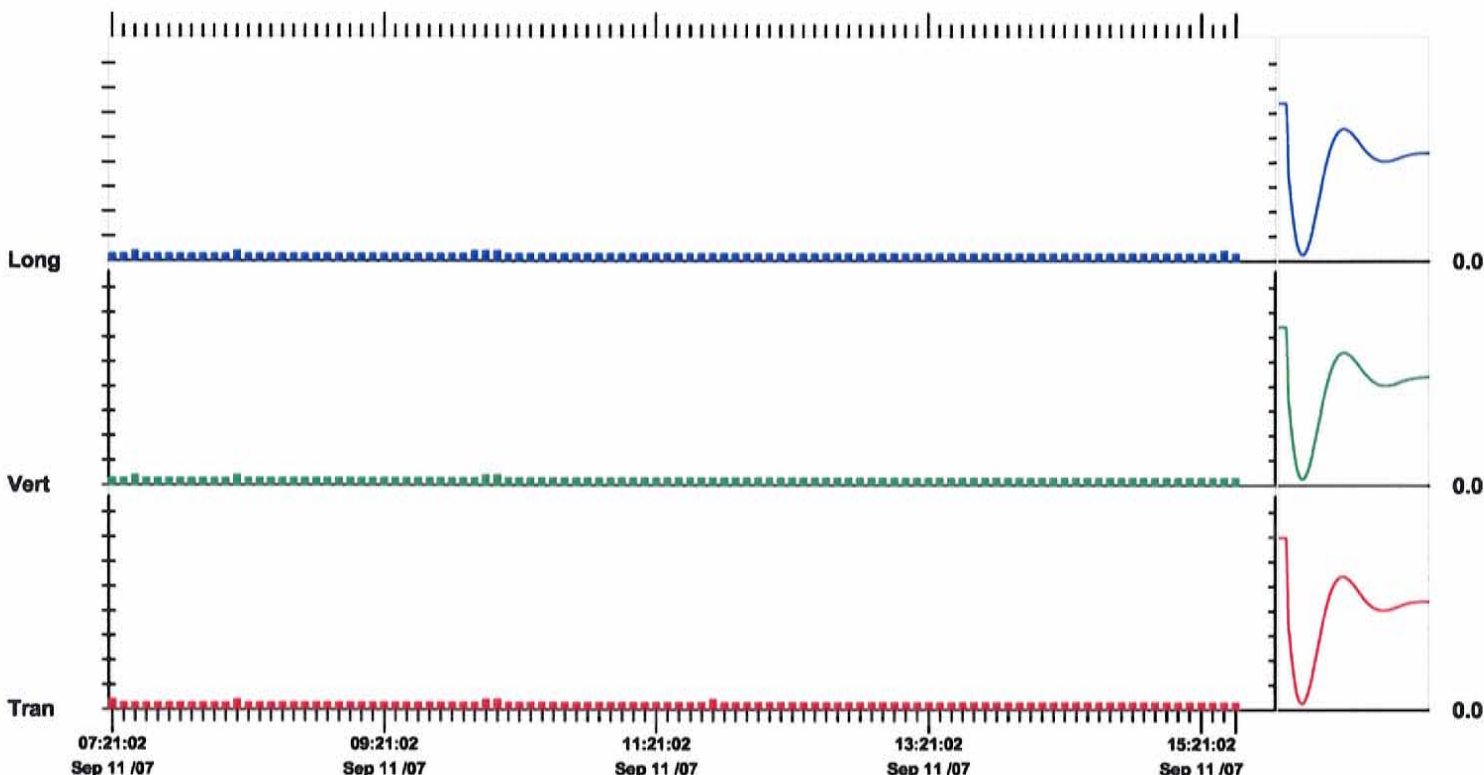
Endroit 1036, rue du Terroir (Terrebone)
 Client: Agence métropolitaine des transports (AMT)
 Utilisateur: David Noël
 Source:

Notes

Post Event Notes

	Tran	Vert	Long	
PPV	0.381	0.381	0.381	mm/s
ZC Freq	>200	>200	>200	Hz
Date	Sep 11 /07	Sep 11 /07	Sep 11 /07	
Time	07:17:07	07:30:52	07:30:52	
Sensorcheck	Passed	Passed	Passed	
Frequency	7.6	7.4	7.4	Hz
Overswing Ratio	3.8	3.9	3.9	

Peak Vector Sum 0.475 mm/s on September 11, 2007 at 10:07:32



Time Scale: 5 minutes /div **Amplitude Scale:** Geo: 1.000 mm/s/div

Sensorcheck

Histogram Start Time 15:36:37 September 11, 2007
Histogram Finish Time 21:50:04 September 11, 2007
Number of Intervals 4481 at 5 seconds
Range Geo :254 mm/s
Sample Rate 2048sps
Job Number: 1

Serial Number BE10301 V 8.01-8.0 MiniMate Plus
Battery Level 6.1 Volts
Calibration June 24, 2005 by Instantel.Inc
File Name L301BUDC.P10

Notes

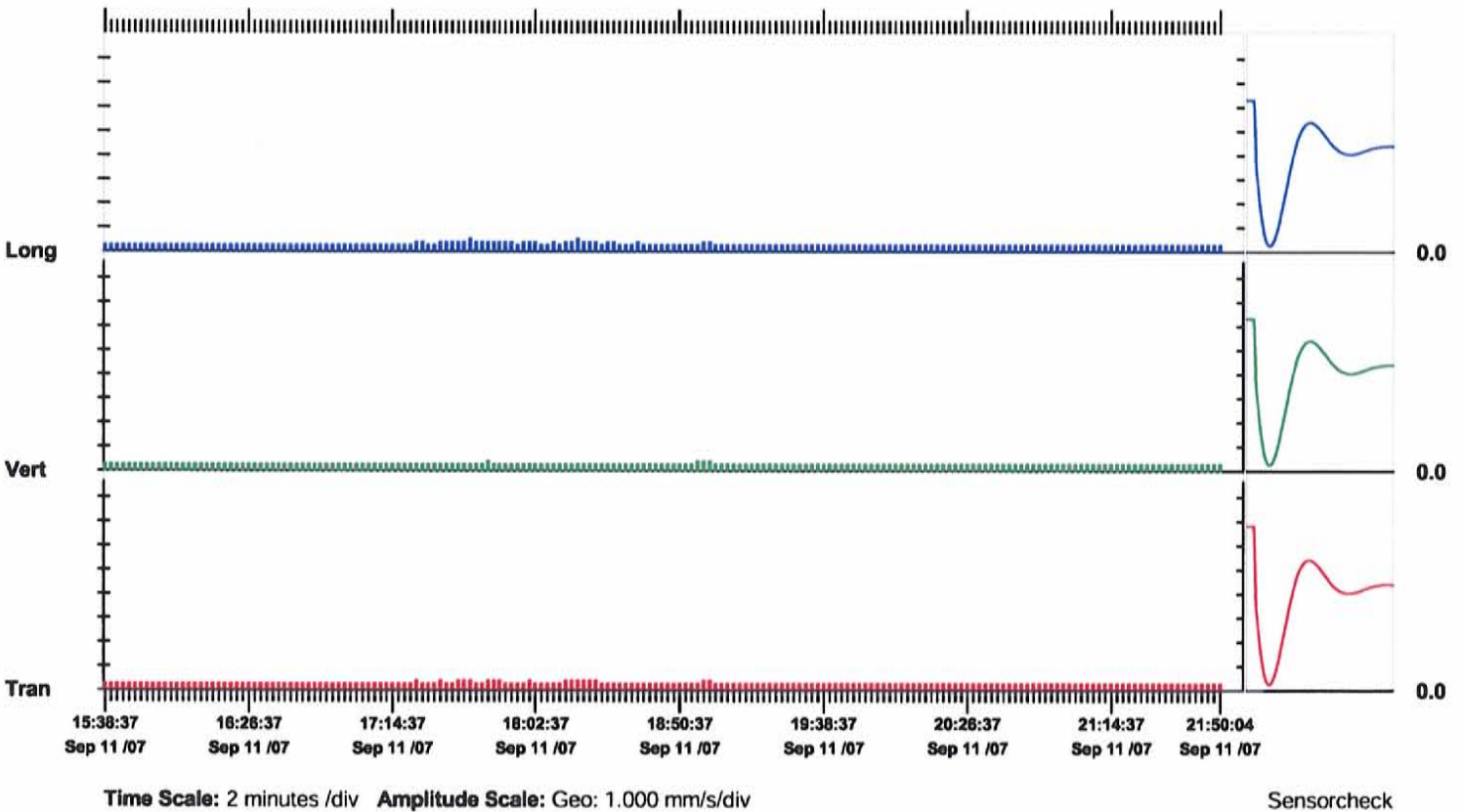
Endroit 1036, rue du Terroir (Terrebone)
 Client: Agence métropolitaine des transports (AMT)
 Utilisateur: David Noël
 Source:

Notes

Post Event Notes

	Tran	Vert	Long	
PPV	0.381	0.381	0.508	mm/s
ZC Freq	>200	>200	102	Hz
Date	Sep 11 /07	Sep 11 /07	Sep 11 /07	
Time	17:20:47	17:46:02	17:40:22	
Sensorcheck	Passed	Passed	Passed	
Frequency	7.6	7.5	7.4	Hz
Overswing Ratio	3.8	3.8	3.9	

Peak Vector Sum 0.622 mm/s on September 11, 2007 at 18:16:27



Histogram Start Time 06:05:32 September 12, 2007
Histogram Finish Time 09:56:29 September 12, 2007
Number of Intervals 2771 at 5 seconds
Range Geo :254 mm/s
Sample Rate 2048sps
Job Number: 1

Serial Number BE10301 V 8.01-8.0 MiniMate Plus
Battery Level 6.3 Volts
Calibration June 24, 2005 by Instantel.Inc
File Name L301BUEG.X80

Notes

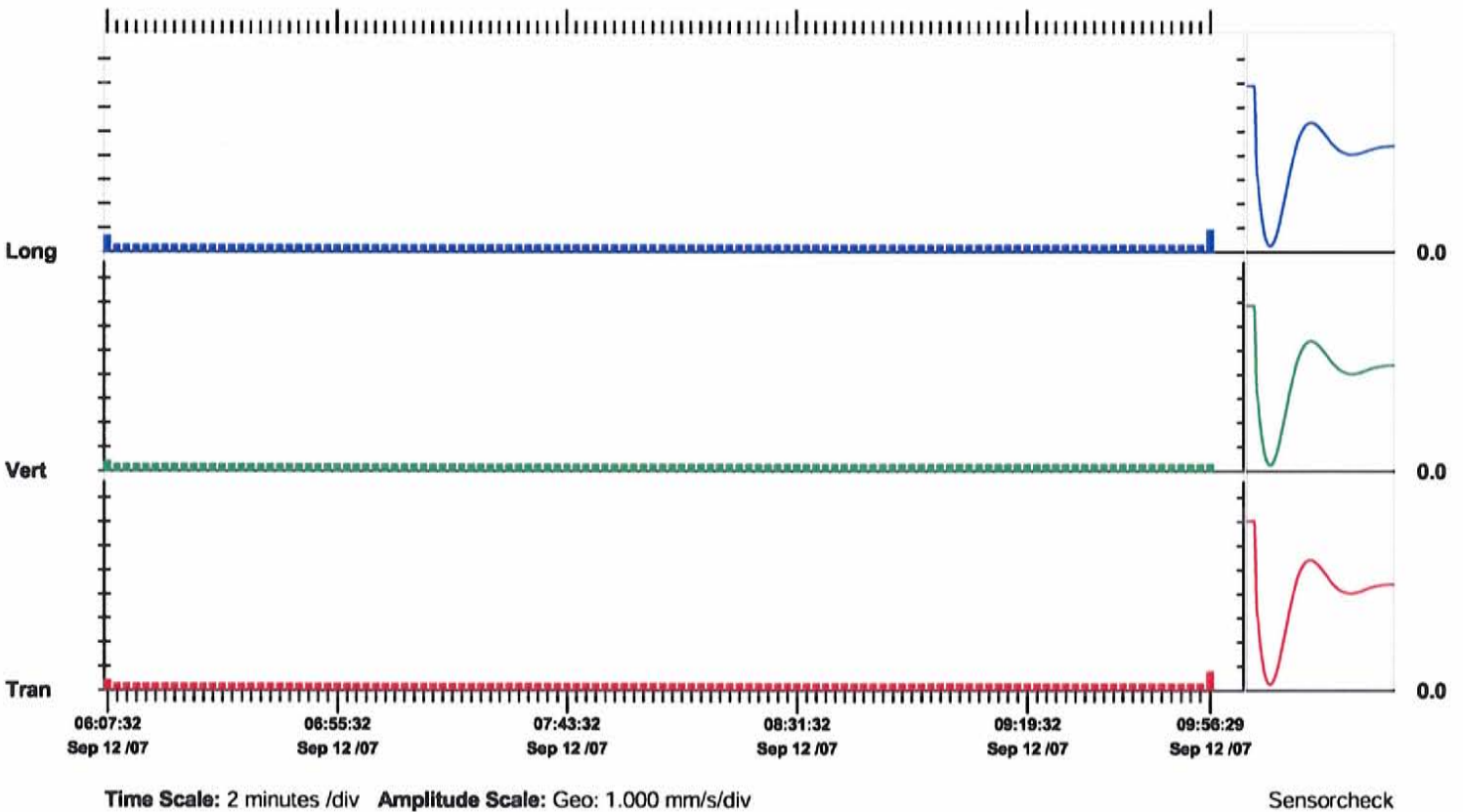
Endroit 1036, rue du Terroir (Terrebone)
 Client: Agence métropolitaine des transports (AMT)
 Utilisateur: David Noël
 Source:

Notes

Post Event Notes

	Tran	Vert	Long	
PPV	0.762	0.381	0.889	mm/s
ZC Freq	128	73	128	Hz
Date	Sep 12 /07	Sep 12 /07	Sep 12 /07	
Time	09:56:12	06:06:42	09:56:12	
Sensorcheck	Passed	Passed	Passed	
Frequency	7.5	7.4	7.4	Hz
Overswing Ratio	3.7	3.8	3.9	

Peak Vector Sum 0.976 mm/s on September 12, 2007 at 09:56:12



Histogram Start Time 10:16:28 September 12, 2007
Histogram Finish Time 15:39:24 September 12, 2007
Number of Intervals 3875 at 5 seconds
Range Geo :254 mm/s
Sample Rate 2048sps
Job Number: 1

Serial Number BE10301 V 8.01-8.0 MiniMate Plus
Battery Level 6.1 Volts
Calibration June 24, 2005 by Instantel.Inc
File Name L301BUES.JG0

Notes

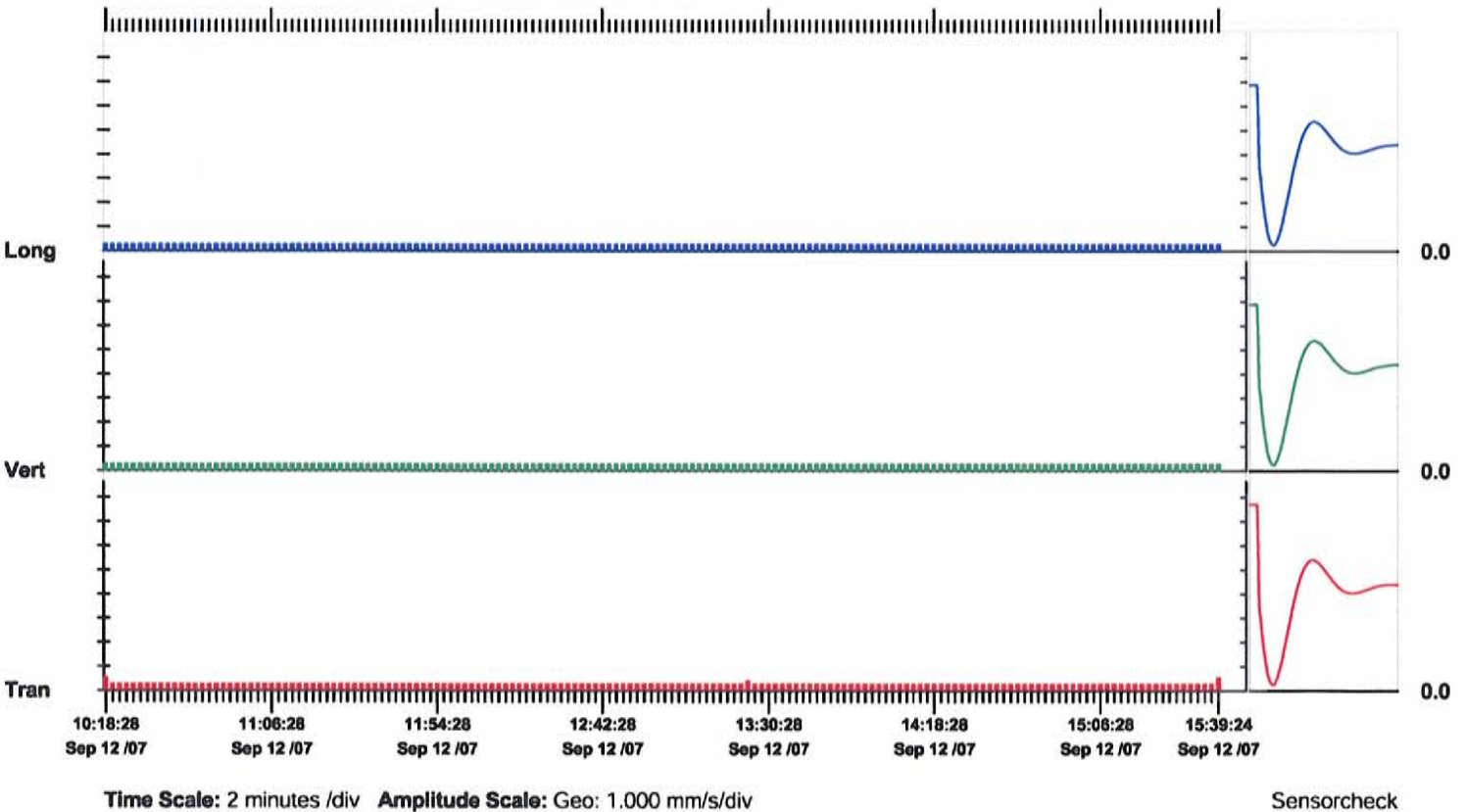
Endroit 1036, rue du Terroir (Terrebone)
 Client: Agence métropolitaine des transports (AMT)
 Utilisateur: David Noël
 Source:

Notes

Post Event Notes

	Tran	Vert	Long	
PPV	0.508	0.254	0.254	mm/s
ZC Freq	85	>200	>200	Hz
Date	Sep 12 /07	Sep 12 /07	Sep 12 /07	
Time	10:17:13	10:16:38	10:16:38	
Sensorcheck	Passed	Passed	Passed	
Frequency	7.6	7.4	7.4	Hz
Overswing Ratio	3.8	3.9	4.0	

Peak Vector Sum 0.582 mm/s on September 12, 2007 at 10:17:13



Histogram Start Time 15:41:12 September 12, 2007
Histogram Finish Time 22:00:05 September 12, 2007
Number of Intervals 4546 at 5 seconds
Range Geo :254 mm/s
Sample Rate 2048sps
Job Number: 1

Serial Number BE10301 V 8.01-8.0 MiniMate Plus
Battery Level 6.0 Volts
Calibration June 24, 2005 by Instantel.Inc
File Name L301BUF7.KO0

Notes

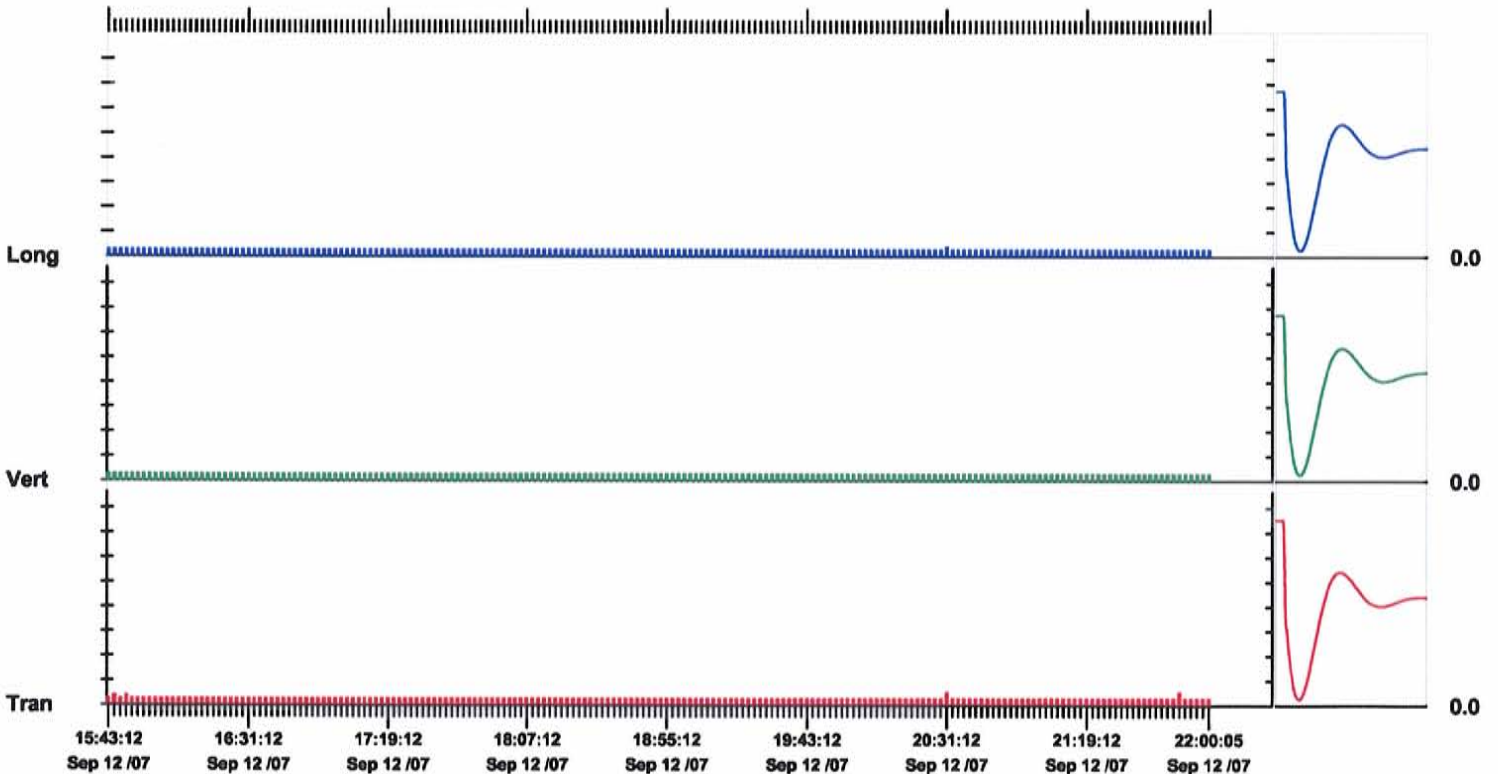
Endroit 1036, rue du Terroir (Terrebone)
 Client: Agence métropolitaine des transports (AMT)
 Utilisateur: David Noël
 Source:

Notes

Post Event Notes

	Tran	Vert	Long	
PPV	0.508	0.254	0.381	mm/s
ZC Freq	128	>200	128	Hz
Date	Sep 12 /07	Sep 12 /07	Sep 12 /07	
Time	20:30:47	15:41:17	20:30:42	
Sensorcheck	Passed	Passed	Passed	
Frequency	7.6	7.4	7.4	Hz
Overswing Ratio	3.7	3.9	3.9	

Peak Vector Sum 0.648 mm/s on September 12, 2007 at 20:30:47



Time Scale: 2 minutes /div **Amplitude Scale:** Geo: 1.000 mm/s/div

Sensorcheck

POINT DE RELEVÉ NO. 3

Temps depart histo.	05:47:59 November 6, 2007	Numero serie	BE7975 V 8.01-8.0 MiniMate Plus
Temps d arret histo.	09:30:03 November 6, 2007	Niveau de la pile	6.2 Voltes
Nombres d intervalles.	2664 a 5 seconds	Calibration	Juin 23, 2005 by InstanTEL Inc.
Portee	Geo. :254 mm/sec.	Nom de filiere	19755MQL.FZ0
Taux echantillons	2048echant. a la sec.		
No: du contrat	1		

Notes

Endroit: 236, Guillaume-Leclerc, Terrebbonne (Lachenaie)
 Client: Agence métropolitaine des transports (AMT)
 Utilisateur: David Noël
 Source:

Extended Notes

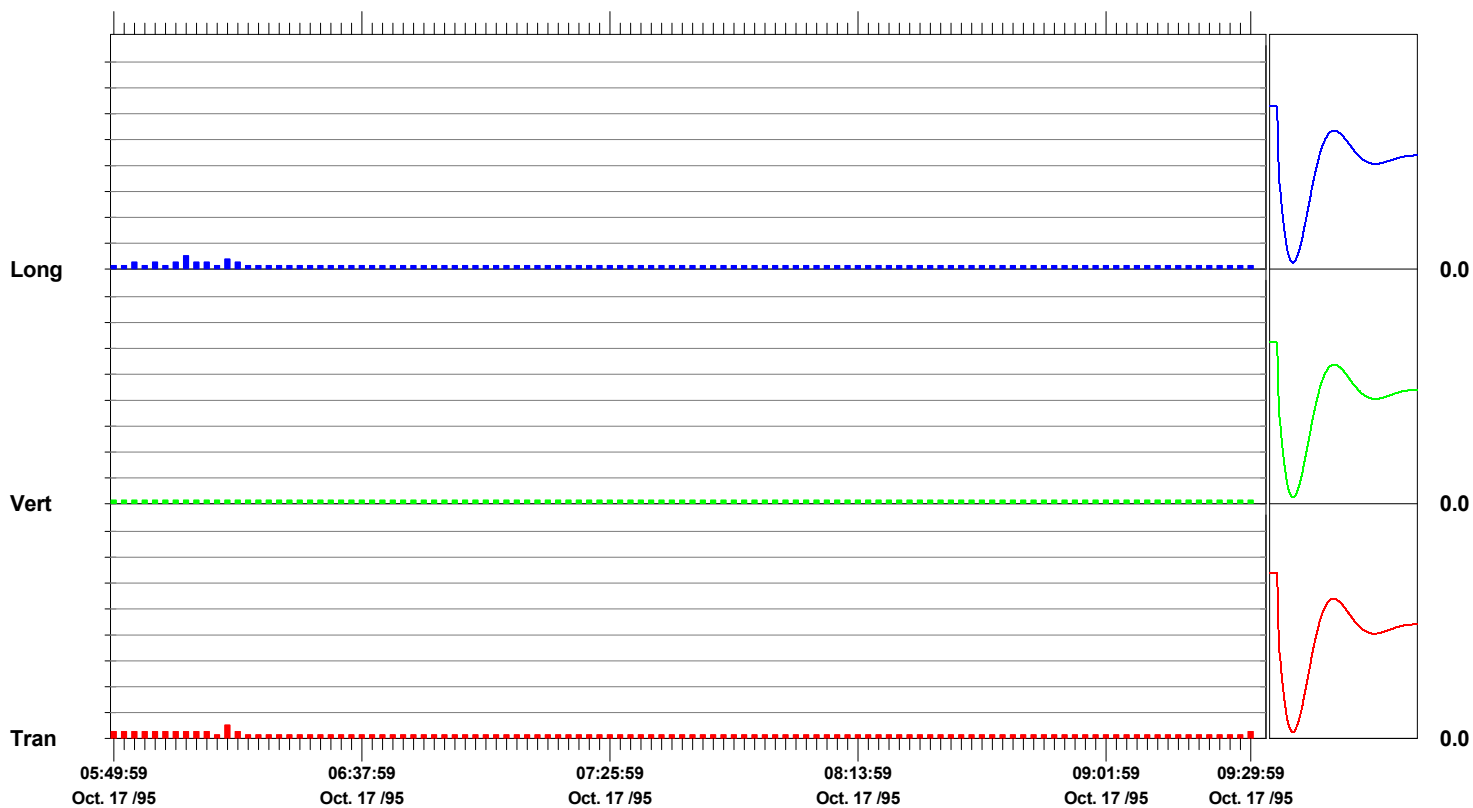
Station 1

Notes post-evenements.

	Tran	Vert	Long	
VMP	0.508	0.127	0.508	mm/sec.
Freq. ZC	>200	N/A	>200	Hz.
Date	Oct. 17 /95	Oct. 17 /95	Oct. 17 /95	
Heure	06:11:19	05:48:04	06:03:04	
Verif. sonde	Reussi.	Reussi.	Reussi.	
Frequency	7.5	7.4	7.3	Hz.
Overswing Ratio	3.8	3.9	4.0	

Somme vecteur maximale 0.648 mm/sec. sur Octobre 17, 1995 a 06:11:19

N/A: Non applicable.



Echelle de temps: 2 minutes /div. Echelle amplitude: Geo.: 1.000 mm/sec./div.

Verif. sonde

Temps depart histo. 09:48:03 Novembre 6, 2007
Temps d arret histo. 22:21:52 Novembre 6, 2007
Nombres d intervalles. 9045 a 5 seconds
Portee Geo. :254 mm/sec.
Taux echantillons 2048echant. a la sec.
No: du contrat 1

Numero serie BE7975 V 8.01-8.0 MiniMate Plus
Niveau de la pile 5.9 Voltes
Calibration Juin 23, 2005 by InstanTel Inc.
Nom de filiere I975BX8L.W30

Notes

Endroit: 236, Guillaume-Leclerc, Terrebonne (Lachenaie)
 Client: Agence métropolitaine des transports (AMT)
 Utilisateur: David Noël
 Source:

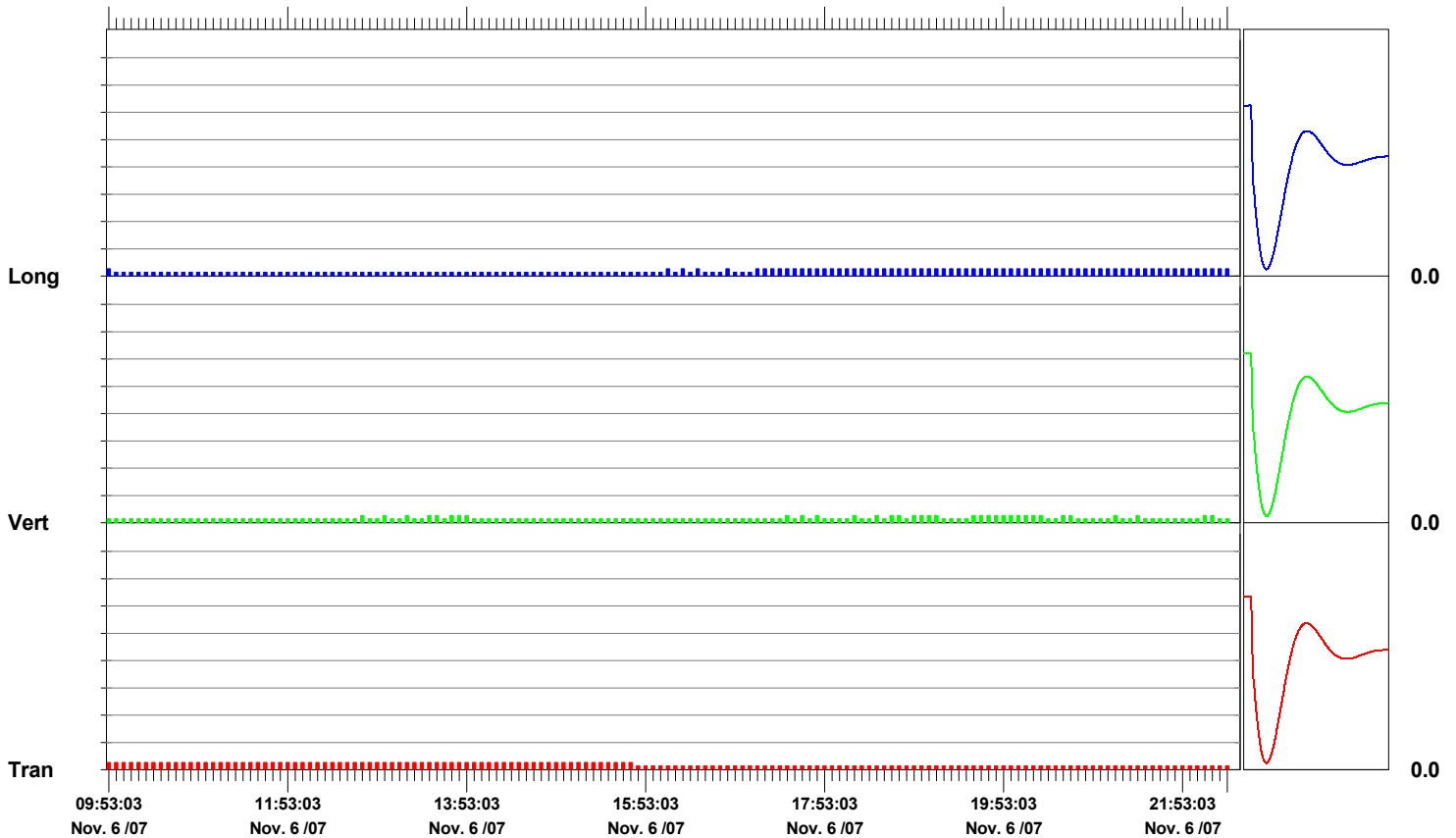
Extended Notes

Point 3

Notes post-evenements.

	Tran	Vert	Long	
VMP	0.254	0.254	0.254	mm/sec.
Freq. ZC	>200	>200	>200	Hz.
Date	Nov. 6 /07	Nov. 6 /07	Nov. 6 /07	
Heure	09:48:08	12:40:48	09:48:23	
Verif. sonde	Reussi.	Reussi.	Reussi.	
Frequency	7.4	7.4	7.3	Hz.
Overswing Ratio	3.9	4.0	4.1	

Somme vecteur maximale 0.359 mm/sec. sur Novembre 6, 2007 a 18:42:23



Echelle de temps: 5 minutes /div. **Echelle amplitude:** Geo.: 1.000 mm/sec./div.

Verif. sonde

Temps depart histo. 05:54:00 Novembre 7, 2007
Temps d arret histo. 22:21:50 Novembre 7, 2007
Nombres d intervalles. 11854 a 5 seconds
Portee Geo. :254 mm/sec.
Taux echantillons 2048echant. a la sec.
No: du contrat 1

Numero serie BE7975 V 8.01-8.0 MiniMate Plus
Niveau de la pile 5.9 Voltes (Battery Low)
Calibration Juin 23, 2005 by InstanTel Inc.
Nom de filiere I975BXA5.Q00

Notes

Endroit: 236, Guillaume-Leclerc, Terrebonne (Lachenaie)
 Client: Agence Métropolitaine des transports (AMT)
 Utilisateur: David Noël
 Source:

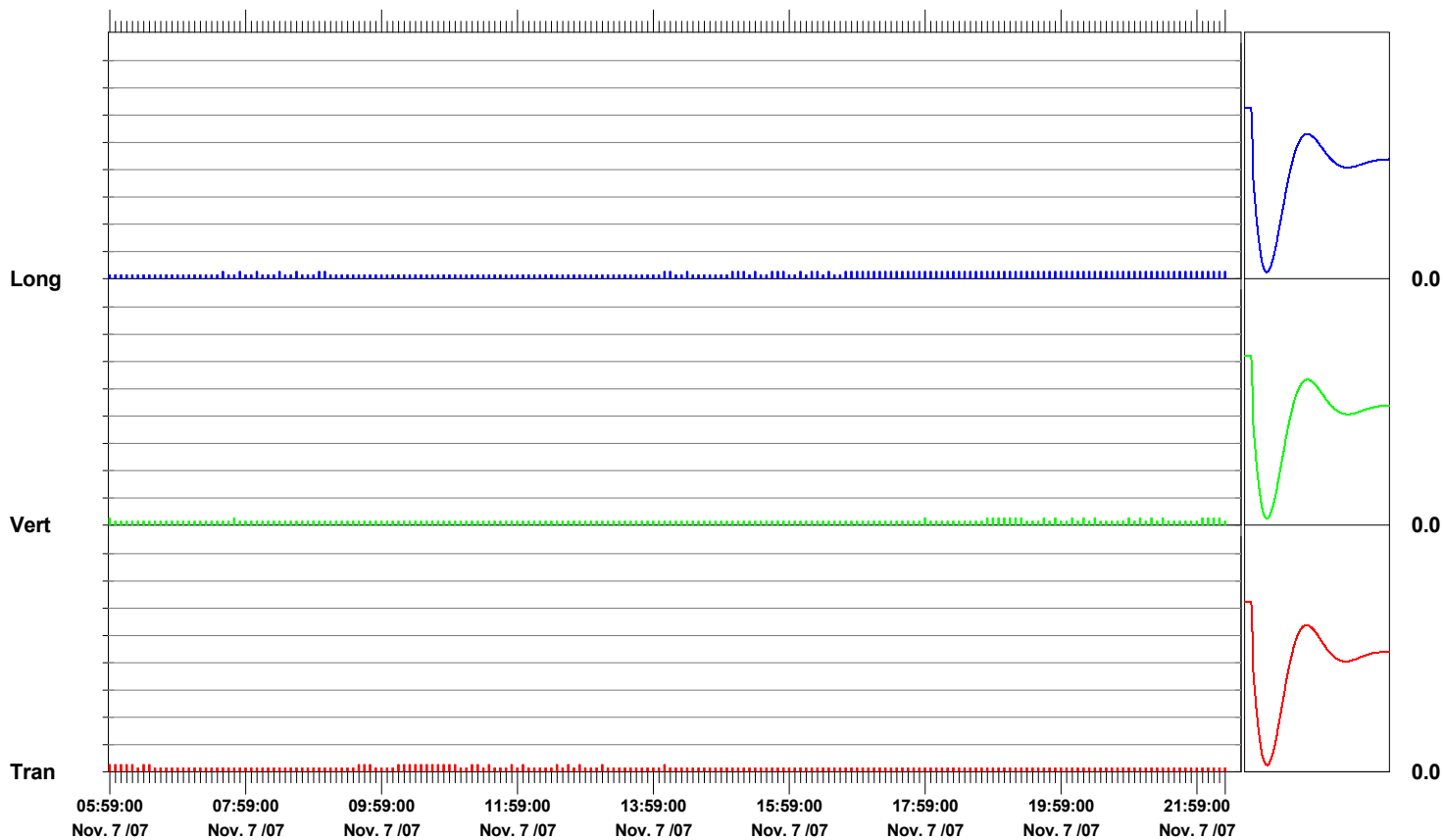
Extended Notes

Point 3

Notes post-evenements.

	Tran	Vert	Long	
VMP	0.254	0.254	0.254	mm/sec.
Freq. ZC	>200	>200	>200	Hz.
Date	Nov. 7 /07	Nov. 7 /07	Nov. 7 /07	
Heure	05:54:05	05:54:20	07:38:25	
Verif. sonde	Reussi.	Reussi.	Reussi.	
Frequency	7.5	7.4	7.4	Hz.
Overswing Ratio	3.9	4.0	4.1	

Somme vecteur maximale 0.311 mm/sec. sur Novembre 7, 2007 a 05:54:20



Echelle de temps: 5 minutes /div. Echelle amplitude: Geo.: 1.000 mm/sec./div.

Verif. sonde

POINT DE RELEVÉ NO. 4

Temps depart histo. 05:34:37 Novembre 6, 2007
Temps d arret histo. 09:02:01 Novembre 6, 2007
Nombres d intervalles. 2488 a 5 seconds
Portee Geo. :254 mm/sec.
Taux echantillons 2048echant. a la sec.
No: du contrat 1

Numero serie BE10301 V 8.01-8.0 MiniMate Plus
Niveau de la pile 6.2 Voltes
Calibration Juin 24, 2005 by Instantel.Inc
Nom de filiere L301BX8A.5P0

Notes

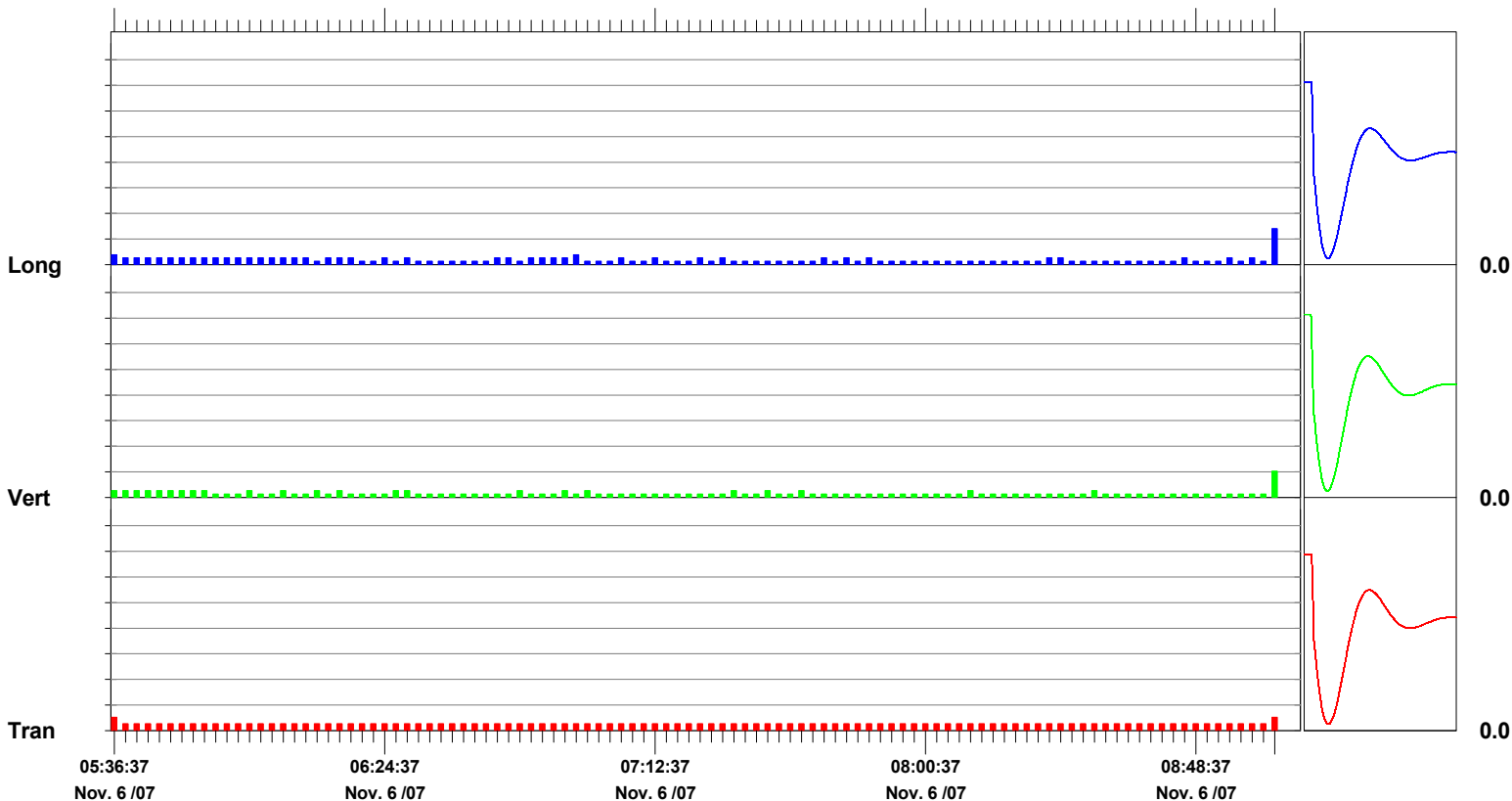
Endroit 700, Boul. Lucille-Teasdale, Terrebonne (Lachenaie)
 Client: Agence métropolitaine des transports (AMT)
 Utilisateur: David Noël
 Source:

Notes

Notes post-evenements.

	Tran	Vert	Long	
VMP	0.508	1.02	1.40	mm/sec.
Freq. ZC	171	73	>200	Hz.
Date	Nov. 6 /07	Nov. 6 /07	Nov. 6 /07	
Heure	05:34:42	09:01:02	09:01:02	
Verif. sonde	Reussi.	Reussi.	Reussi.	
Frequency	7.6	7.8	7.5	Hz.
Overswing Ratio	3.5	3.4	4.1	

Somme vecteur maximale 1.40 mm/sec. sur Novembre 6, 2007 a 09:01:02



Echelle de temps: 2 minutes /div. **Echelle amplitude:** Geo.: 1.000 mm/sec./div.

Verif. sonde

Temps depart histo.	09:21:58 Novembre 6, 2007	Numero serie	BE10301 V 8.01-8.0 MiniMate Plus
Temps d arret histo.	22:17:11 Novembre 6, 2007	Niveau de la pile	6.0 Voltes
Nombres d intervalles.	9302 a 5 seconds	Calibration	Juin 24, 2005 by InstanTEL.Inc
Portee	Geo. :254 mm/sec.	Nom de filiere	L301BX8K.OM0
Taux echantillons	2048echant. a la sec.		
No: du contrat	1		

Notes

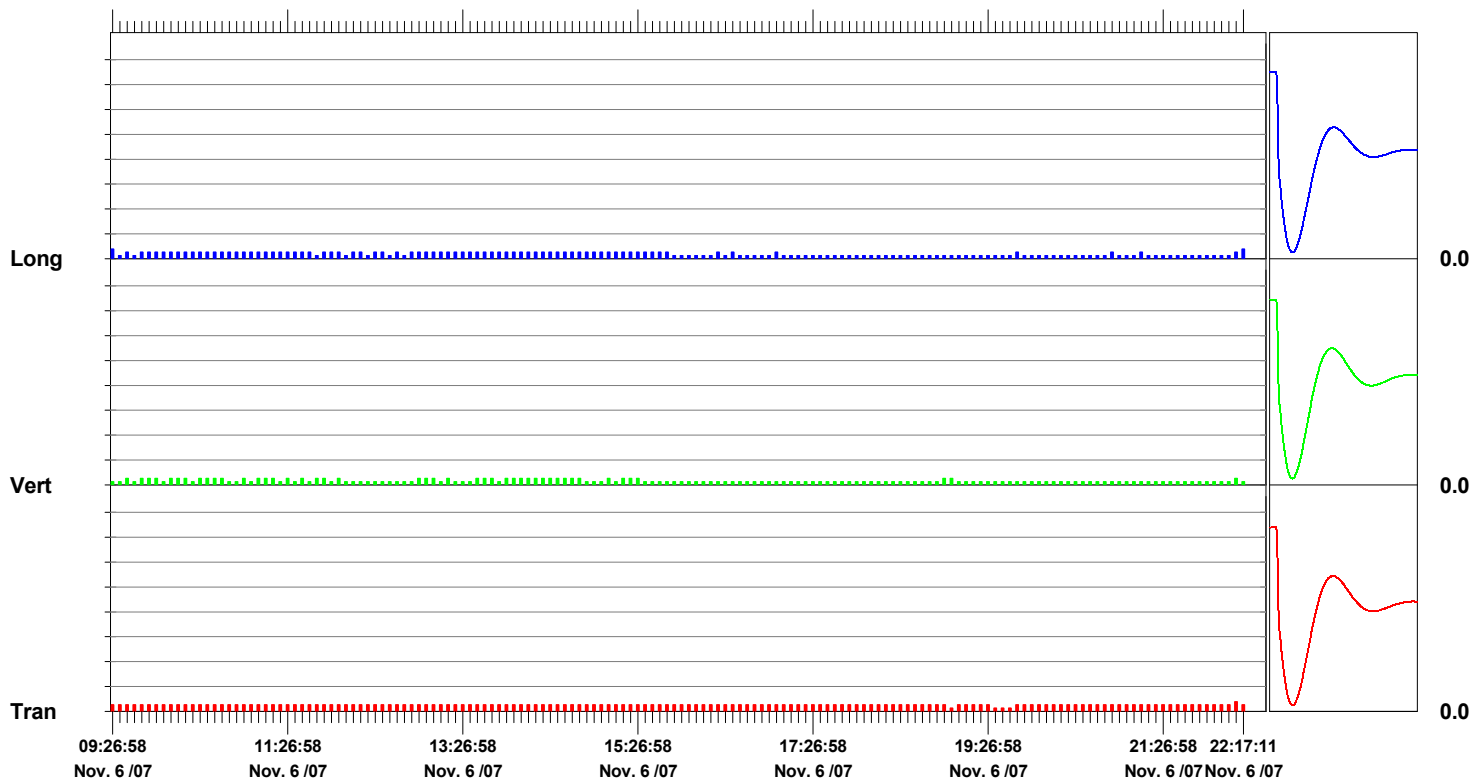
Endroit 700, Boul. Lucille-Teasdale, Terrebonne (Lachenaie)
 Client: Agence métropolitaine des transports (AMT)
 Utilisateur: David Noël
 Source:

Notes

Notes post-evenements.

	Tran	Vert	Long	
VMP	0.381	0.254	0.381	mm/sec.
Freq. ZC	171	>200	114	Hz.
Date	Nov. 6 /07	Nov. 6 /07	Nov. 6 /07	
Heure	22:16:48	09:35:58	09:22:18	
Verif. sonde	Reussi.	Reussi.	Reussi.	
Frequency	7.5	7.7	7.3	Hz.
Overswing Ratio	3.7	3.5	4.3	

Somme vecteur maximale 0.475 mm/sec. sur Novembre 6, 2007 a 09:22:18



Echelle de temps: 5 minutes /div. **Echelle amplitude:** Geo.: 1.000 mm/sec./div.

Verif. sonde

Histogram Start Time 05:45:09 November 7, 2007
Histogram Finish Time 22:16:59 November 7, 2007
Number of Intervals 11901 at 5 seconds
Range Geo :254 mm/s
Sample Rate 2048sps
Job Number: 1

Serial Number BE10301 V 8.01-8.0 MiniMate Plus
Battery Level 5.9 Volts
Calibration June 24, 2005 by InstanTel.Inc
File Name L301BXA5.B90

Notes

Endroit 700, Boul. Lucille-Teasdale, Terrebonne (Lachenaie)
Client: Agence métropolitaine des transports (AMT)
Utilisateur: David Noël
Source:

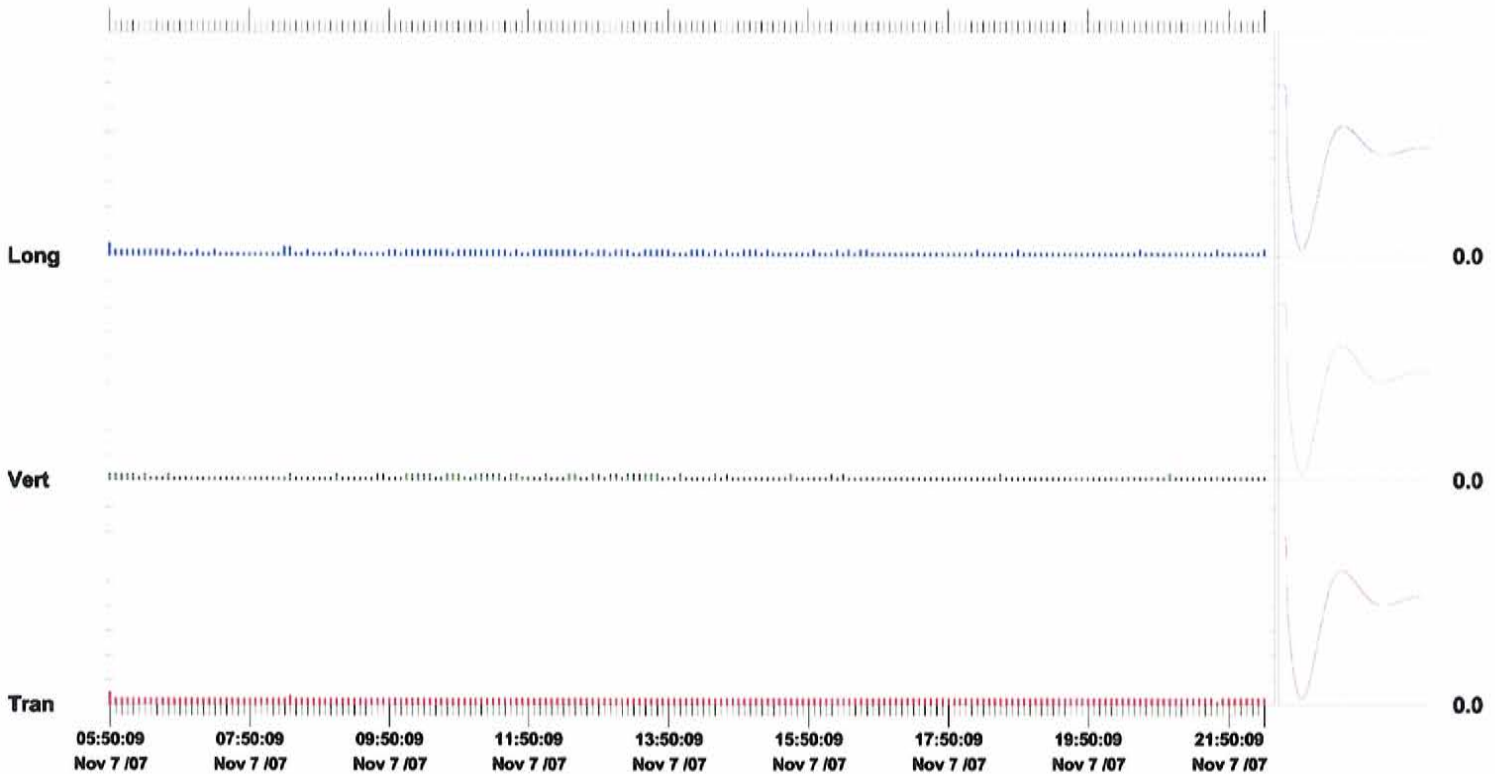
Notes

Point 4

Post Event Notes

	Tran	Vert	Long	
PPV	0.508	0.254	0.508	mm/s
ZC Freq	93	>200	93	Hz
Date	Nov 7 /07	Nov 7 /07	Nov 7 /07	
Time	05:45:19	05:45:14	05:45:19	
Sensorcheck	Passed	Passed	Passed	
Frequency	7.5	7.7	7.3	Hz
Overswing Ratio	3.7	3.5	4.3	

Peak Vector Sum 0.718 mm/s on November 7, 2007 at 05:45:19



Time Scale: 5 minutes /div Amplitude Scale: Geo: 1.000 mm/s/div

Sensorcheck